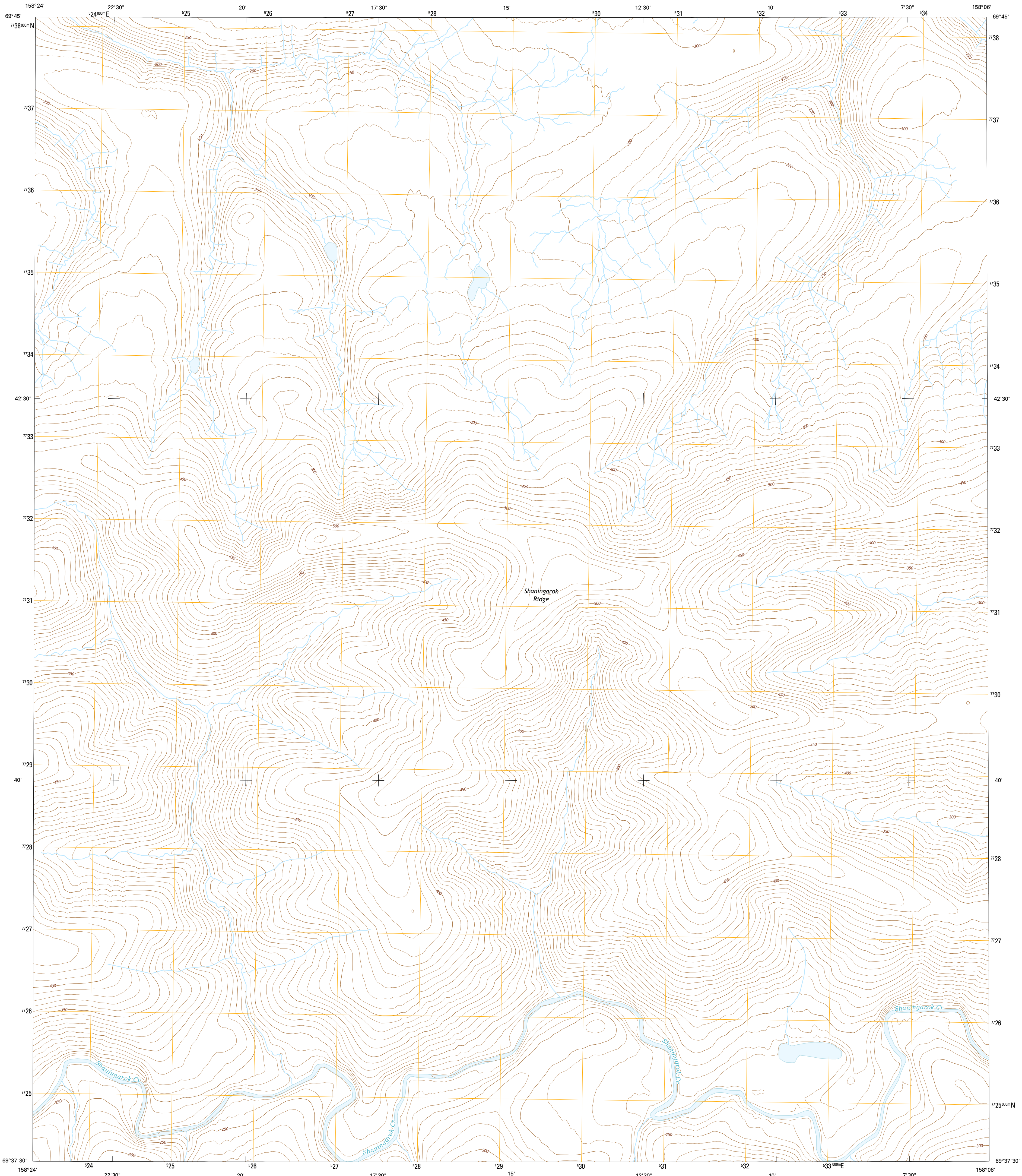




U.S. DEPARTMENT OF THE INTERIOR  
U.S. GEOLOGICAL SURVEY



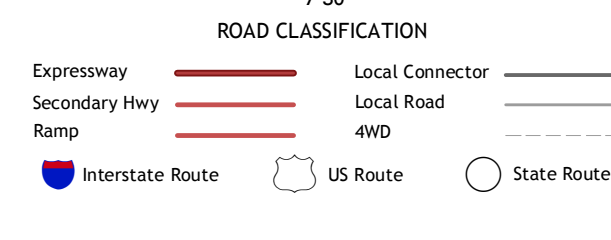
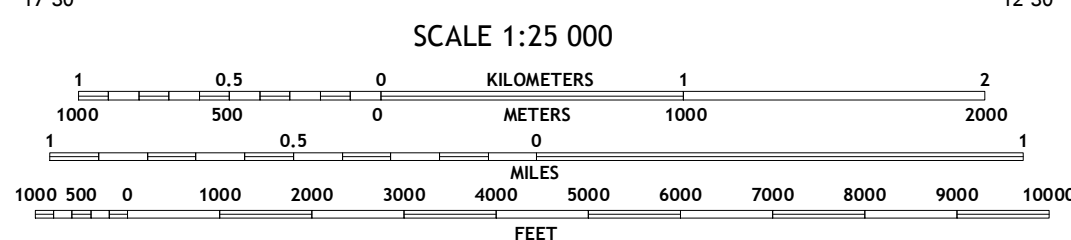
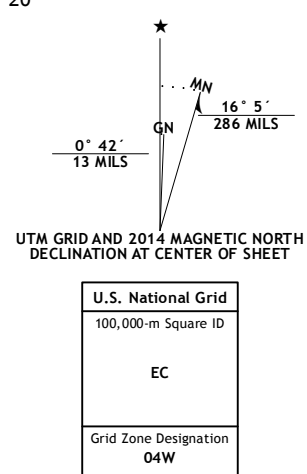
LOOKOUT RIDGE C-4 NW QUADRANGLE  
ALASKA-NORTH SLOPE BOROUGH  
7.5-MINUTE SERIES



Produced by the United States Geological Survey  
North American Datum of 1983 (NAD83)  
World Geodetic System of 1984 (WGS84). Projection and  
1 000-meter grid: Universal Transverse Mercator, Zone 04W

This map is not a legal document. Boundaries may be generalized  
for this map scale. Private lands within government reservations  
may not be shown. Obtain permission before entering private lands

Imagery.....SPOT, ©2010  
Roads.....Alaska Dept. of Transportation, 2013  
Names.....GNIS, 2013  
Hydrography.....National Hydrography Dataset, 2010  
Contours.....National Elevation Dataset, 2013  
Boundaries.....Multiple sources; see metadata file, 1950 - 2012  
Public Land Survey System.....BLM, 2006 - 2008



CONTOUR INTERVAL 10 FEET  
NORTH AMERICAN VERTICAL DATUM OF 1988  
CONTOURS MAY NOT MEET NATIONAL MAP ACCURACY STANDARDS

This map was produced to conform with the  
National Geospatial Program US Topo Product Standard, 2011.  
A metadata file associated with this product is draft version 0.6.17

1	2	3
4	5	6
7	8	

ADJOINING QUADRANGLES

- 1 Lookout Ridge (D-5) SE
- 2 Lookout Ridge (D-4) SW
- 3 Lookout Ridge (D-4) SE
- 4 Lookout Ridge (C-5) NE
- 5 Lookout Ridge (C-4) NE
- 6 Lookout Ridge (C-5) SE
- 7 Lookout Ridge (C-4) SW
- 8 Lookout Ridge (C-4) SE

LOOKOUT RIDGE C-4 NW, AK  
2014

