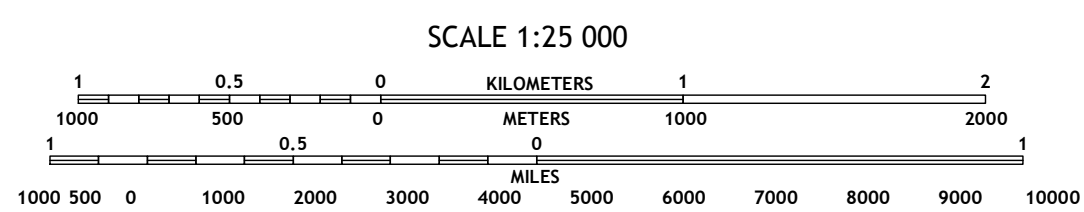
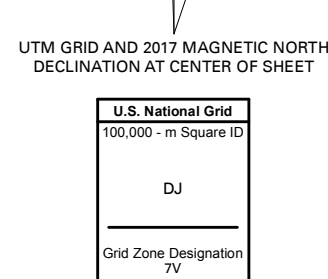
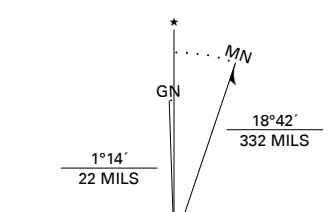


Produced by the United States Geological Survey

North American Datum of 1983 (NAD83)
World Geodetic System of 1984 (WGS84). Projection and
1 000-meter grid/Universal Transverse Mercator, Zone 7V
This map is not a legal document. Boundaries may be
generalized for this map scale. Private lands within government
reservations may not be shown. Obtain permission before
entering private lands.

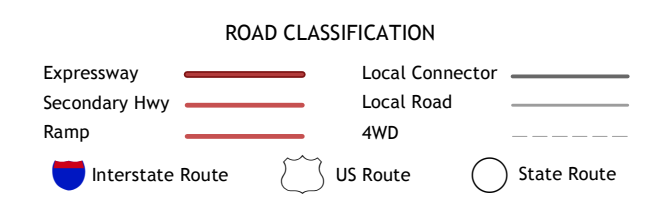
Imagery.....SPOT, © September 2010
Roads.....Alaska Dept. of Transportation, Not Available
Names.....GNS, 1981 - 2016
Hydrography.....National Hydrography Dataset, 2016
Contours.....National Elevation Dataset, 2015
Boundaries.....Multiple sources; see metadata file 2016
Public Land Survey System.....BLM, 2008 - 2017
Wetlands.....FWS National Wetlands Inventory 1997 - 2004



QUADRANGLE LOCATION

1	2	3
4	5	6
7	8	

- 1 McCarthy C-5 SE
- 2 McCarthy C-4 SW
- 3 McCarthy C-4 SE
- 4 McCarthy B-5 NE
- 5 McCarthy B-4 NE
- 6 McCarthy B-5 SE
- 7 McCarthy B-4 SW
- 8 McCarthy B-4 SE



CONTOUR INTERVAL 80 FEET
NORTH AMERICAN VERTICAL DATUM OF 1988
This map was produced to conform with the
National Geospatial Program US Topo Product Standard, 2011.
A metadata file associated with this product is draft version 0.6.17

