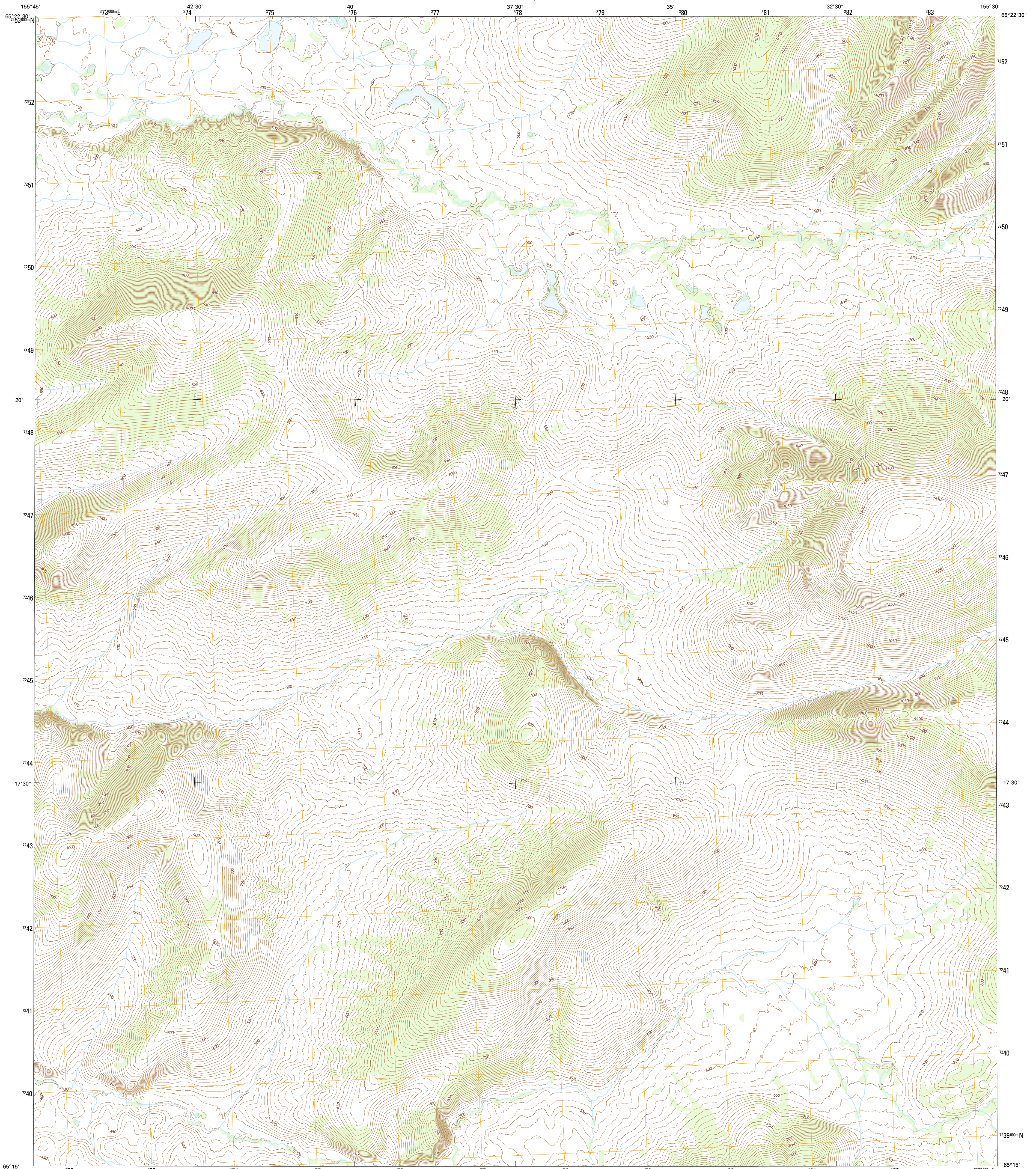




U.S. DEPARTMENT OF THE INTERIOR
U.S. GEOLOGICAL SURVEY



MELOZITNA B-6 SE QUADRANGLE
ALASKA
7.5-MINUTE SERIES

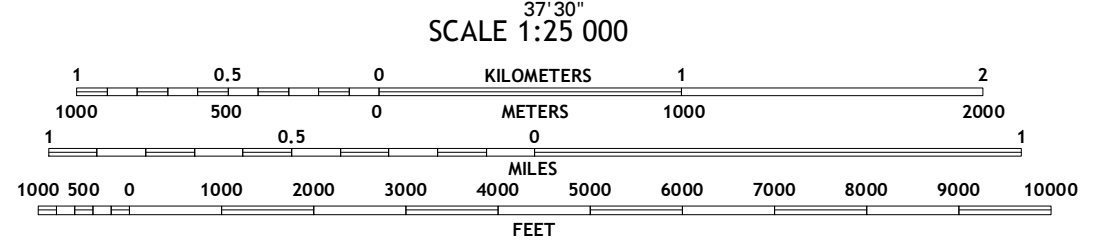
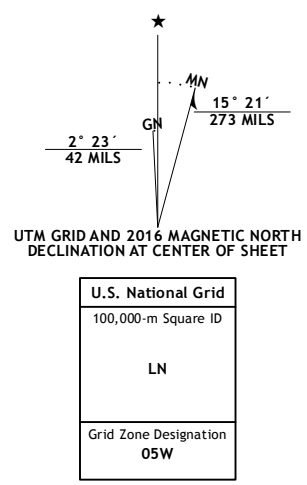


Produced by the United States Geological Survey

North American Datum of 1983 (NAD83)
World Geodetic System of 1984 (WGS84), Projection and
1 000-meter grid; Universal Transverse Mercator, Zone 50W
10 000-foot ticks; Alaska Coordinate System of 1983 (zone 4)

This map is not a legal document. Boundaries may be
generalized for this map scale. Private lands within government
reservations may not be shown. Obtain permission before
entering private lands.

Imagery.....SPOT5, 2009 - 2015
Roads.....Alaska Dept. of Transportation, 2014
Names.....GNIS, 2016
Hydrography.....National Hydrography Dataset, 2010
Contours.....National Elevation Dataset, 2016
Boundaries.....Multiple sources; see metadata file, 1950 - 2016
Public Land Survey System.....BLM, 2006 - 2008
Wetlands.....FWS National Wetlands Inventory 1977 - 2014



ROAD CLASSIFICATION

- Expressway
- Secondary Hwy
- Ramp
- Interstate Route
- US Route
- State Route
- Local Connector
- Local Road
- 4WD

CONTOUR INTERVAL 10 FEET
NORTH AMERICAN DATUM OF 1983

This map was produced to conform with the
National Geospatial Program US Topo Product Standard, 2011.
A metadata file associated with this product is draft version 0.6.18

1	2	3
4	5	6
7	8	

ADJOINING QUADRANGLES

- 1 Melozitna (B-6) NW
- 2 Melozitna (B-6) NE
- 3 Melozitna (B-5) NW
- 4 Melozitna (B-5) SW
- 5 Melozitna (A-6) NW
- 6 Melozitna (A-6) NE
- 7 Melozitna (A-5) NW
- 8 Melozitna (A-5) NE

MELOZITNA B-6 SE, AK
2016

