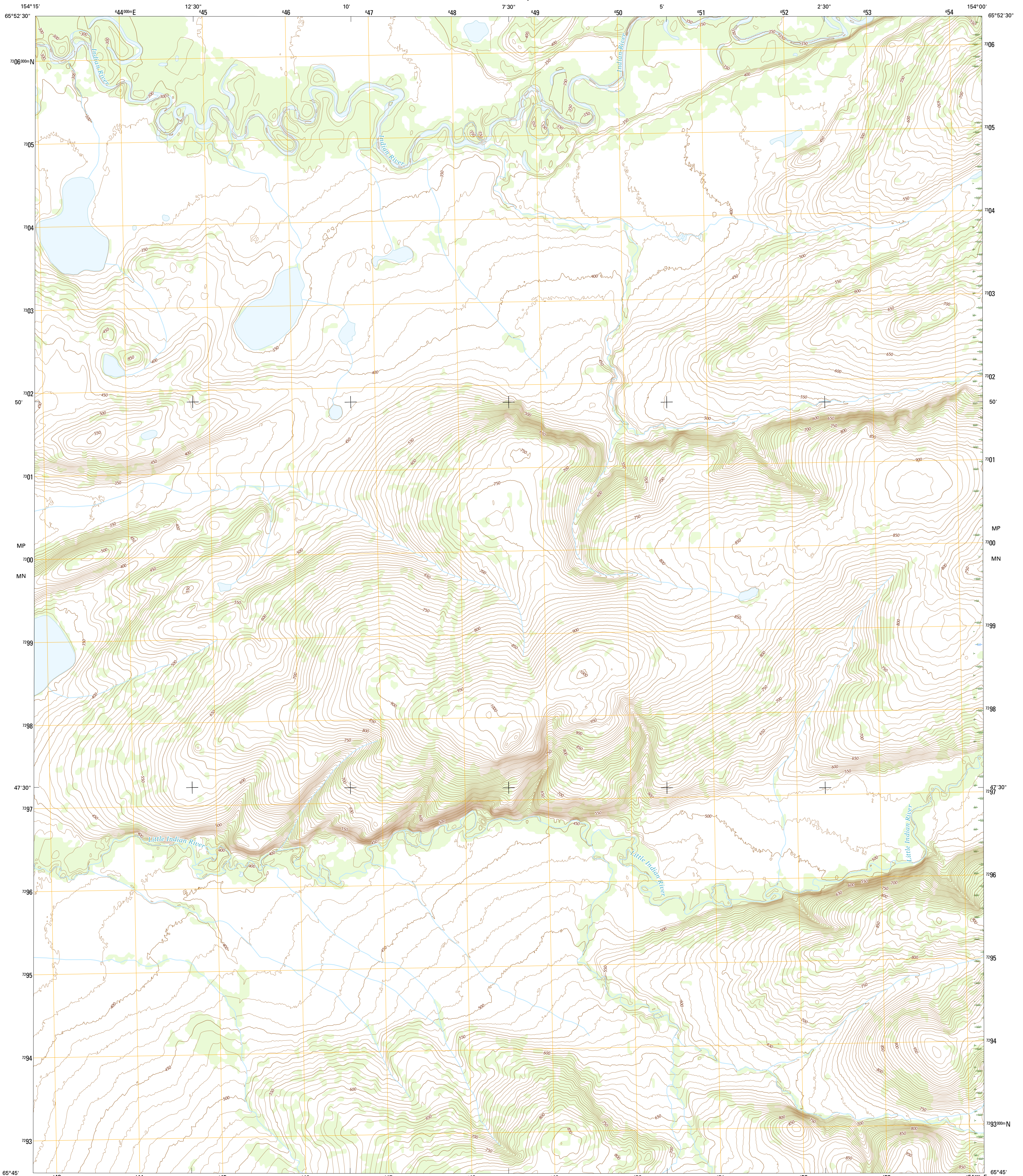




U.S. DEPARTMENT OF THE INTERIOR
U.S. GEOLOGICAL SURVEY



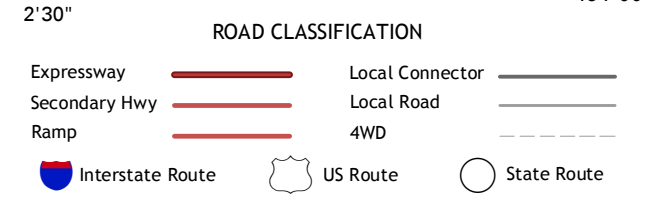
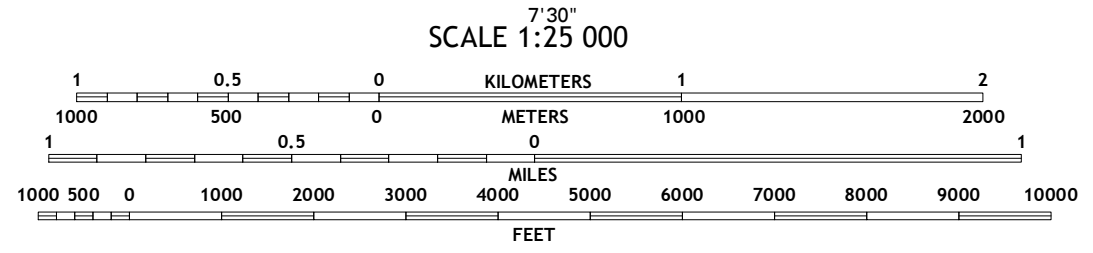
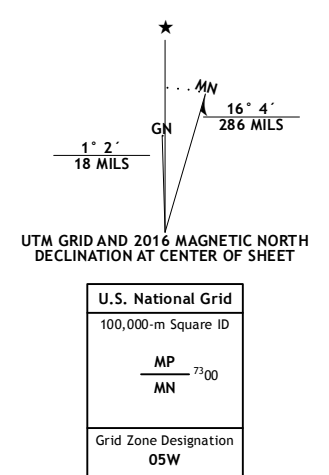
MELOZITNA D-3 SE QUADRANGLE
ALASKA
7.5-MINUTE SERIES



Produced by the United States Geological Survey
North American Datum of 1983 (NAD83)
World Geodetic System of 1984 (WGS84), Projection and
1 000-meter grid; Universal Transverse Mercator, Zone 05W
10 000-foot ticks; Alaska Coordinate System of 1983 (zone 4)

This map is not a legal document. Boundaries may be
generalized for this map scale. Private lands within government
reservations may not be shown. Obtain permission before
entering private lands.

Imagery.....SPOT5, 2009 - 2015
Roads.....Alaska Dept. of Transportation, 2014
Names.....GNIS, 2016
Hydrography.....National Hydrography Dataset, 2010
Contours.....National Elevation Dataset, 2015
Boundaries.....Multiple sources; see metadata file, 1950 - 2016
Public Land Survey System.....BLM, 2006 - 2008
Wetlands.....FWS National Wetlands Inventory 1977 - 2014



1	2	3	1 Melozitna (D-3) NW
4	5	2 Melozitna (D-3) NE	2 Melozitna (D-2) NW
6	7	3 Melozitna (D-2) SW	4 Melozitna (D-3) SW
8		4 Melozitna (D-2) SW	5 Melozitna (D-3) NW
		5 Melozitna (D-3) SW	6 Melozitna (C-3) NW
		6 Melozitna (C-3) NW	7 Melozitna (C-3) NE
		7 Melozitna (C-3) NE	8 Melozitna (C-2) NW
		8 Melozitna (C-2) NW	

MELOZITNA D-3 SE, AK
2016

