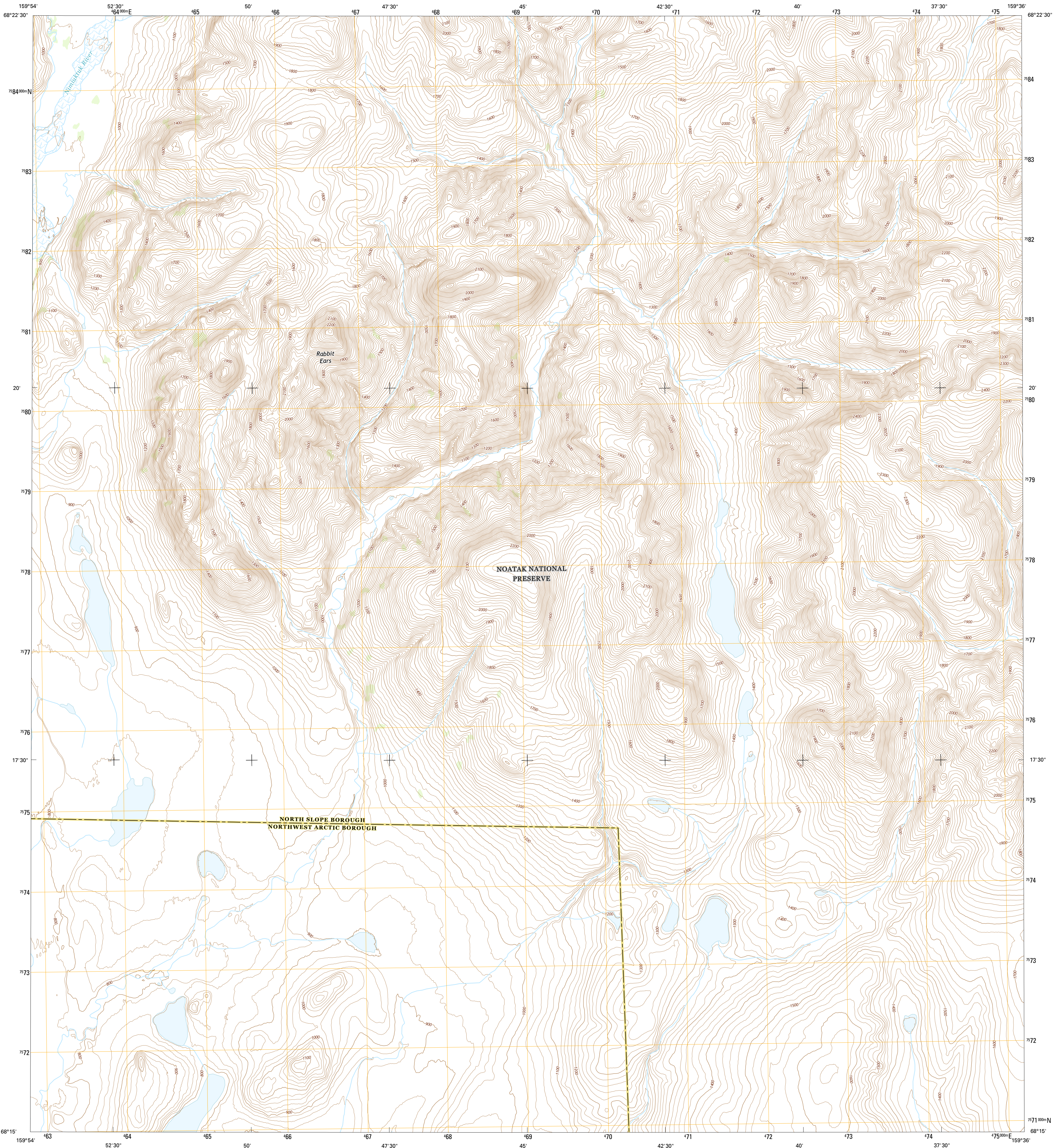




U.S. DEPARTMENT OF THE INTERIOR
U.S. GEOLOGICAL SURVEY



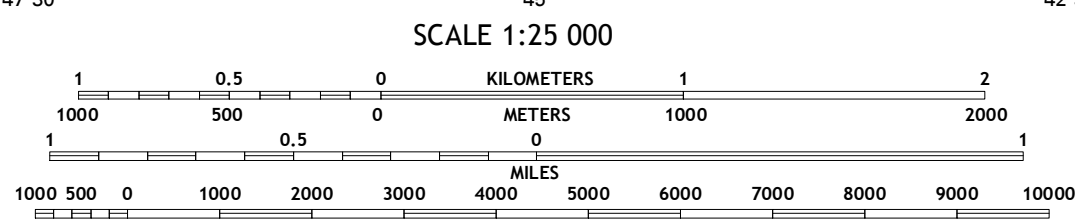
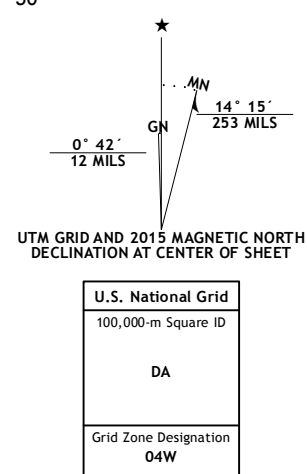
MISHEGUK MOUNTAIN B-2 SE QUADRANGLE
ALASKA
7.5-MINUTE SERIES



Produced by the United States Geological Survey
North American Datum of 1983 (NAD83)
World Geodetic System of 1984 (WGS84). Projection and
1 000-meter grid: Universal Transverse Mercator, Zone 04W

This map is not a legal document. Boundaries may be generalized for this map scale. Private lands within government reservations may not be shown. Obtain permission before entering private lands

Imagery.....SPOT, ©2010
Roads.....Alaska Dept. of Transportation, 2013
Names.....GNIS, 2015
Hydrography.....National Hydrography Dataset, 2010
Contours.....National Elevation Dataset, 2013
Boundaries.....Multiple sources; see metadata file, 1990 - 2015
Public Land Survey System.....BLM, 2006 - 2008

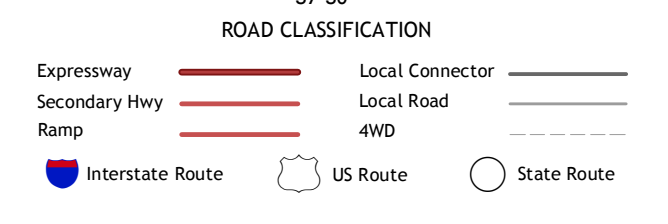


CONTOUR INTERVAL 20 FEET
NORTH AMERICAN VERTICAL DATUM OF 1988

This map was produced to conform with the
National Geospatial Program US Topo Product Standard, 2011.
A metadata file associated with this product is draft version 0.6.17



QUADRANGLE LOCATION



1	2	3
4	5	6
7	8	

ADJOINING QUADRANGLES

- 1 Misheguk Mountain (B-2) NW
- 2 Misheguk Mountain (B-2) NE
- 3 Misheguk Mountain (B-1) NW
- 4 Misheguk Mountain (B-2) SW
- 5 Misheguk Mountain (B-1) SW
- 6 Misheguk Mountain (A-2) NW
- 7 Misheguk Mountain (A-2) NE
- 8 Misheguk Mountain (A-1) NW

MISHEGUK MOUNTAIN B-2 SE, AK
2015

