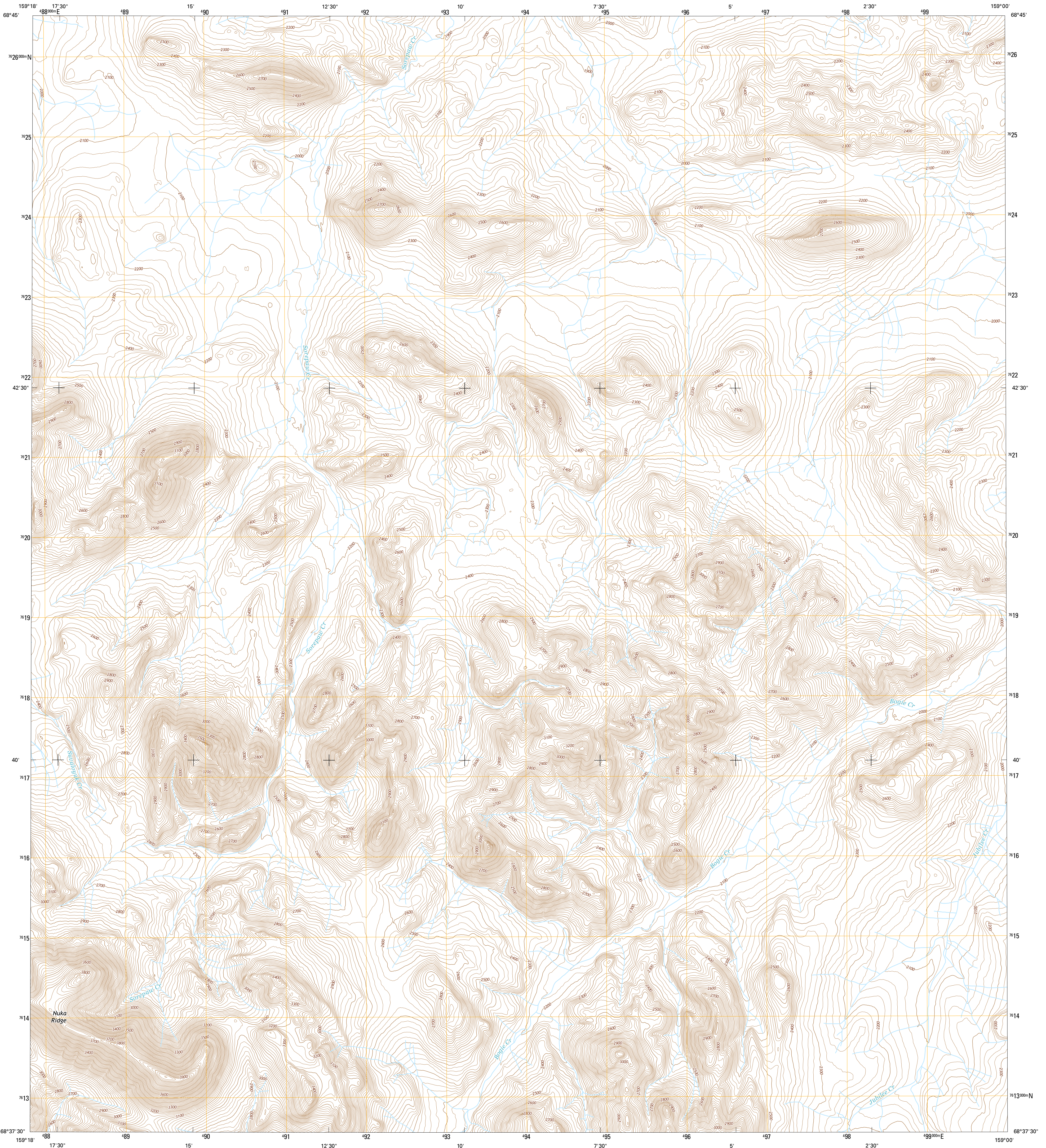




U.S. DEPARTMENT OF THE INTERIOR  
U.S. GEOLOGICAL SURVEY



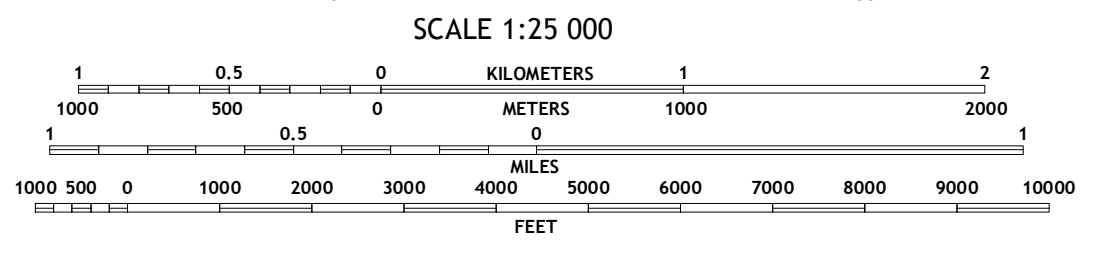
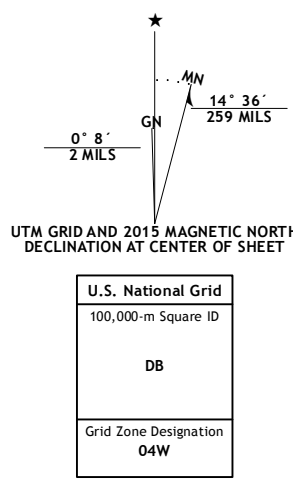
MISHEGUK MOUNTAIN C-1 NE QUADRANGLE  
ALASKA-NORTH SLOPE BOROUGH  
7.5-MINUTE SERIES



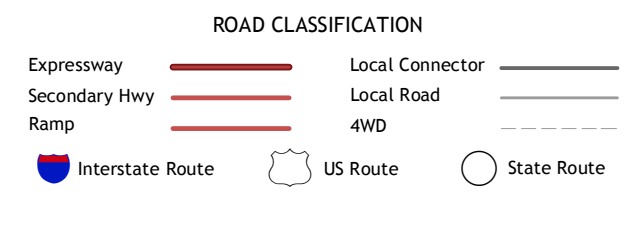
Produced by the United States Geological Survey  
North American Datum of 1983 (NAD83)  
World Geodetic System of 1984 (WGS84). Projection and  
1 000-meter grid: Universal Transverse Mercator, Zone 04W

This map is not a legal document. Boundaries may be generalized  
for this map scale. Private lands within government reservations  
may not be shown. Obtain permission before entering private lands

Imagery.....SPOT, ©2010  
Roads.....Alaska Dept. of Transportation, 2013  
Names.....GNIS, 2015  
Hydrography.....National Hydrography Dataset, 2010  
Contours.....National Elevation Dataset, 2013  
Boundaries.....Multiple sources; see metadata file, 1950 - 2015  
Public Land Survey System.....BLM, 2006 - 2008



QUADRANGLE LOCATION



CONTOUR INTERVAL 20 FEET  
NORTH AMERICAN VERTICAL DATUM OF 1988

This map was produced to conform with the  
National Geospatial Program US Topo Product Standard, 2011.  
A metadata file associated with this product is draft version 0.6.17.

1	2	3
4	5	6
7	8	

ADJOINING QUADRANGLES

1 Misheguk Mountain (D-1) SW  
2 Misheguk Mountain (D-1) SE  
3 Howard Pass (D-5) SW  
4 Misheguk Mountain (C-1) NW  
5 Howard Pass (C-5) NW  
6 Misheguk Mountain (C-1) SW  
7 Misheguk Mountain (C-1) SE  
8 Howard Pass (C-5) SW

MISHEGUK MOUNTAIN C-1 NE, AK  
2015



NCA REF. NO. U.S.G.S. X-2 5 K 3 8 6 2