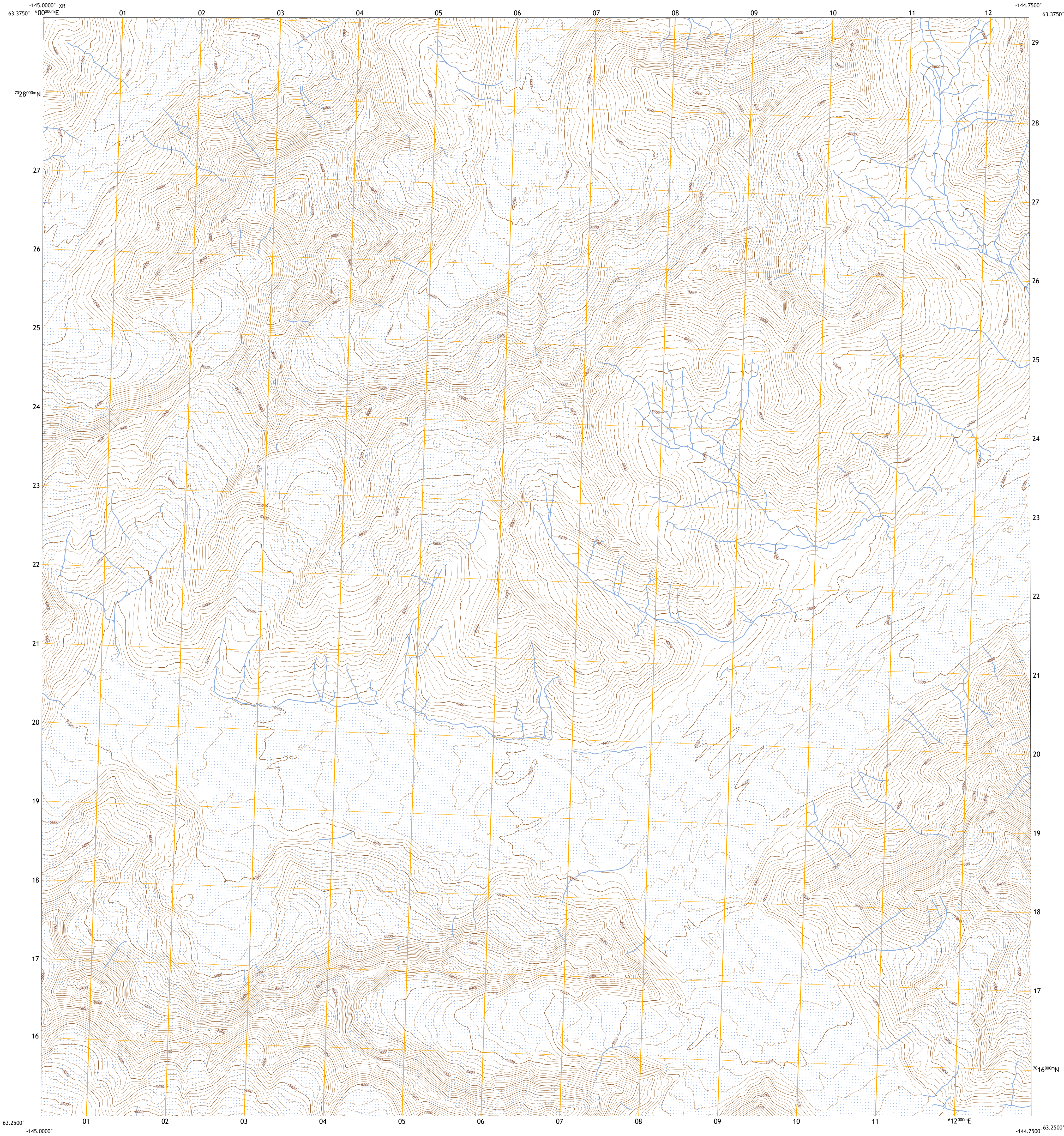




U.S. DEPARTMENT OF THE INTERIOR  
U.S. GEOLOGICAL SURVEY

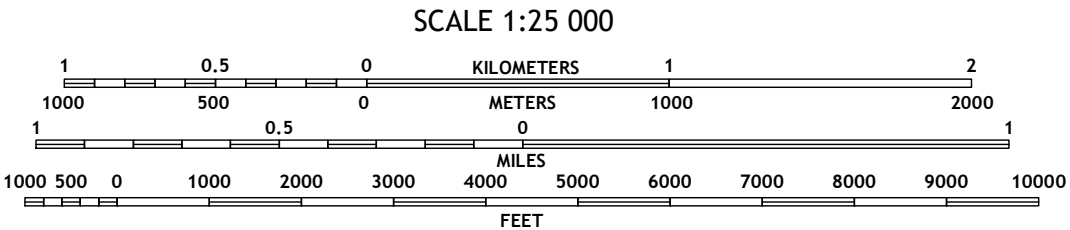
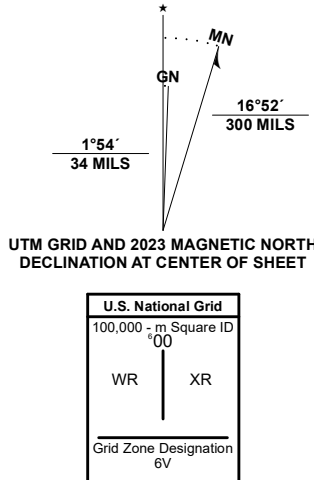


MOUNT HAYES B-2 SW QUADRANGLE  
ALASKA - SOUTHEAST FAIRBANKS CENSUS AREA  
7.5-MINUTE SERIES



Produced by the United States Geological Survey

North American Datum of 1983 (NAD83)  
World Geodetic System of 1984 (WGS84). Projection and  
1 000-meter grid/Universal Transverse Mercator, Zone 6V  
This map is not a legal document. Boundaries may be  
generalized for this map scale. Private lands within government  
reservations may not be shown. Obtain permission before  
entering private lands.  
Imagery.....SPOT, © June 2013 - June 2013  
Roads.....Alaska Dept. of Transportation, Not Available  
Names.....GNIS, Not Available  
Hydrography.....National Hydrography Dataset, 2000 - 2021  
Contours.....National Elevation Dataset, 2012  
Boundaries.....Multiple sources: see metadata file 2021 - 2022  
Public Land Survey System.....BLM, 2008  
Wetlands.....FWS National Wetlands Inventory Not Available



1	2	3
4	5	6
7	8	

ADJOINING QUADRANGLES

ROAD CLASSIFICATION	
Expressway	Local Connector
Secondary Hwy	Local Road
Ramp	4WD
Interstate Route	US Route
	State Route

MOUNT HAYES B-2 SW, AK  
2024

