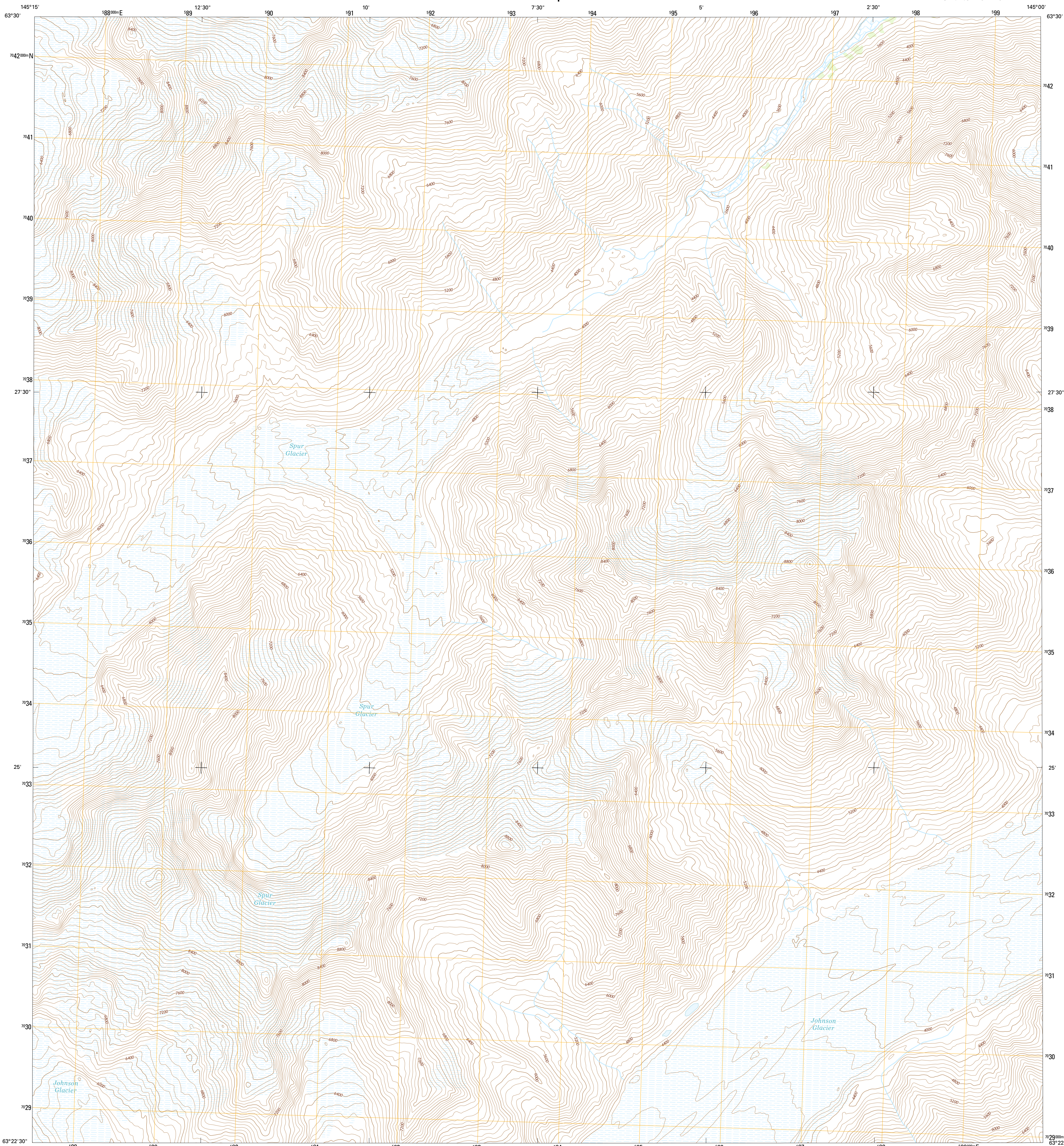




U.S. DEPARTMENT OF THE INTERIOR
U.S. GEOLOGICAL SURVEY



MOUNT HAYES B-3 NE QUADRANGLE
ALASKA
7.5-MINUTE SERIES

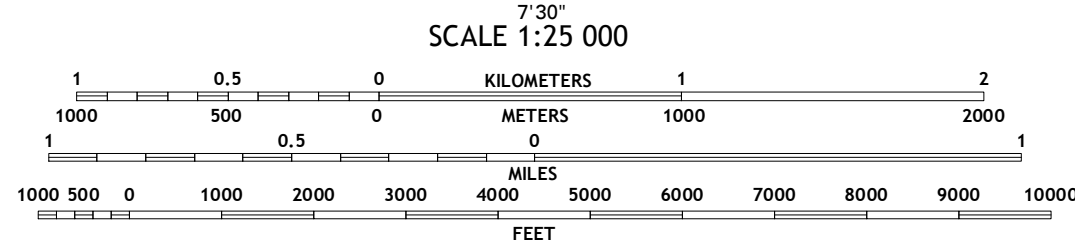
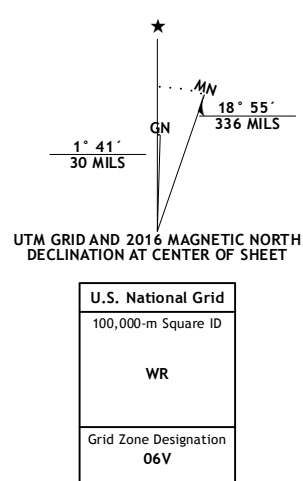


Produced by the United States Geological Survey

North American Datum of 1983 (NAD83)
World Geodetic System of 1984 (WGS84) Projection and
1 000-meter grid; Universal Transverse Mercator, Zone 06V
10 000-foot ticks; Alaska Coordinate System of 1983 (zone 2)

This map is not a legal document. Boundaries may be generalized for this map scale. Private lands within government reservations may not be shown. Obtain permission before entering private lands.

Image: SPOT, 2009 - 2015
Roads: Alaska Dept. of Transportation, 2014
Names: GNIS, 2016
Hydrography: National Hydrography Dataset, 2013
Contours: National Elevation Dataset, 2011
Boundaries: Multiple sources; see metadata file, 1950 - 2016
Public Land Survey System: BLM, 2006 - 2008
Wetlands: FWS National Wetlands Inventory 1977 - 2014



CONTOUR INTERVAL 80 FEET
NORTH AMERICAN VERTICAL DATUM OF 1988

This map was produced to conform with the
National Geospatial Program US Topo Product Standard, 2011.
A metadata file associated with this product is draft version 0.6.18

1	2	3	1 Mount Hayes (C-3) SW
2	3	4	2 Mount Hayes (C-3) SE
3	4	5	3 Mount Hayes (C-2) SW
4	5	6	4 Mount Hayes (B-3) NW
5	6	7	5 Mount Hayes (B-2) NW
6	7	8	6 Mount Hayes (B-3) SW
7	8		7 Mount Hayes (B-3) SE
8			8 Mount Hayes (B-2) SW

ROAD CLASSIFICATION

	Expressway		Local Connector
	Secondary Hwy		Local Road
	Ramp		4WD
	Interstate Route		US Route
			State Route

MOUNT HAYES B-3 NE, AK
2016

