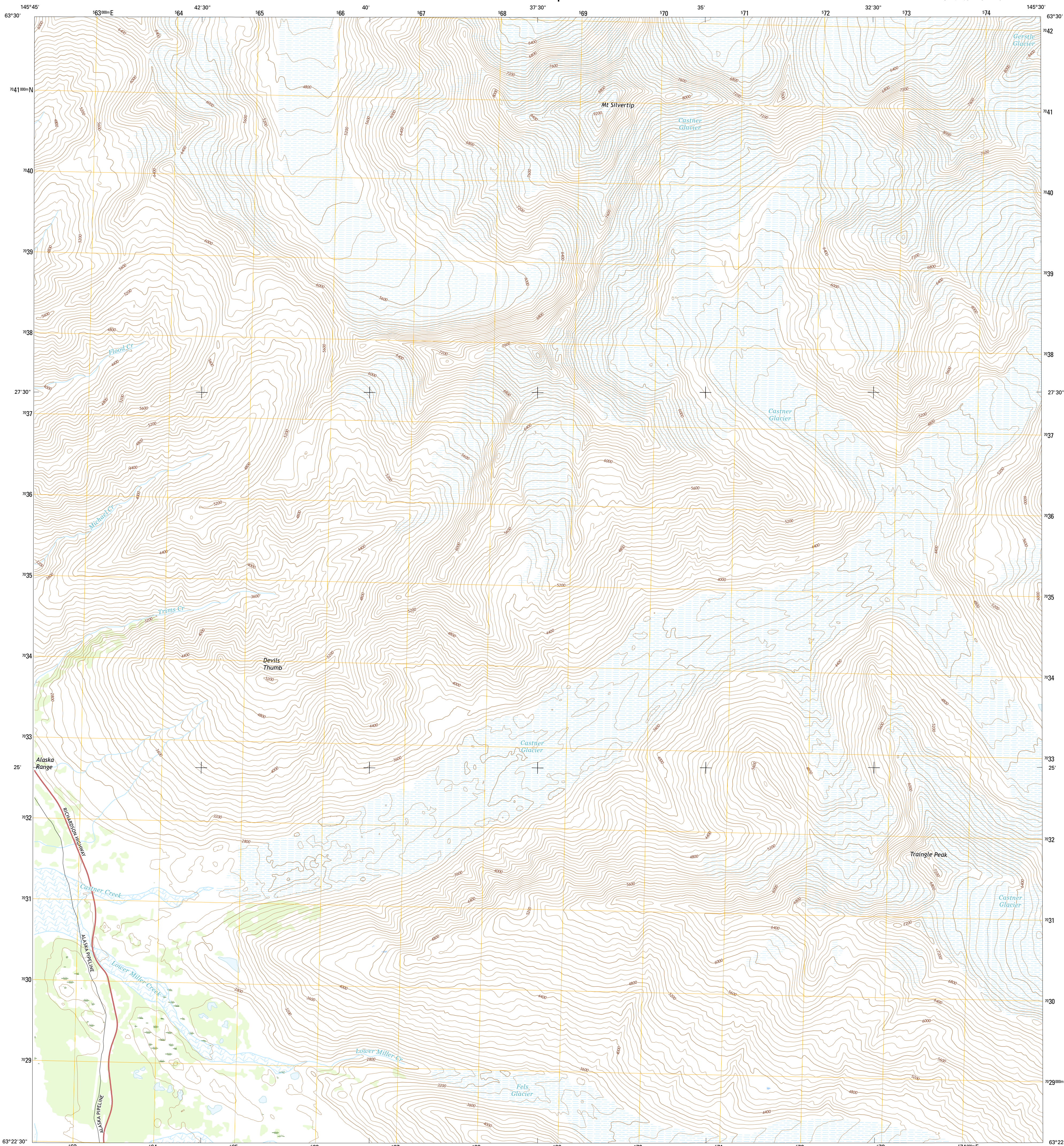




U.S. DEPARTMENT OF THE INTERIOR  
U.S. GEOLOGICAL SURVEY



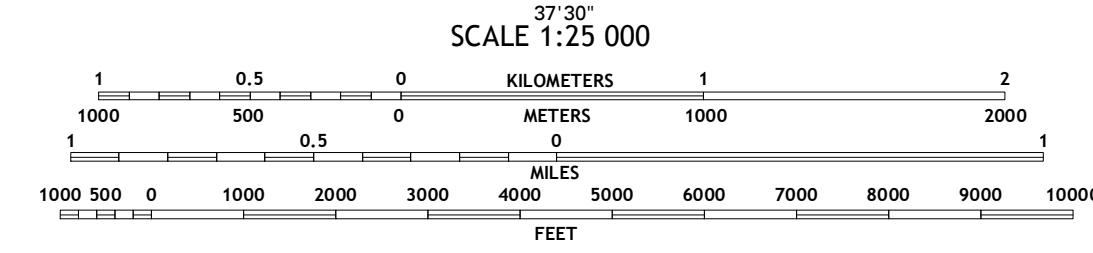
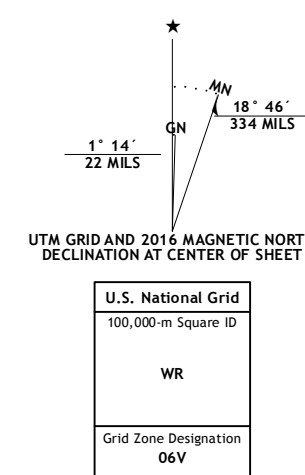
MOUNT HAYES B-4 NE QUADRANGLE  
ALASKA  
7.5-MINUTE SERIES



Produced by the United States Geological Survey  
North American Datum of 1983 (NAD83)  
World Geodetic System of 1994 (WGS84). Projection and  
1 000-meter grid: Universal Transverse Mercator, Zone 06V  
10 000-foot ticks: Alaska Coordinate System of 1983 (zone 2)

This map is not a legal document. Boundaries may be  
generalized for this map scale. Private lands within government  
reservations may not be shown. Obtain permission before  
entering private lands.

Image: SPOT, 2009 - 2015  
Roads: Alaska Dept. of Transportation, 2014  
Names: GNS, 2016  
Hydrography: National Hydrography Dataset, 2013  
Contours: National Elevation Dataset, 2011  
Boundaries: Multiple sources; see metadata file, 1950 - 2016  
Public Land Survey System: BLM, 2006 - 2008  
Wetlands: FWS National Wetlands Inventory 1977 - 2014



ROAD CLASSIFICATION

Expressway	Local Connector
Secondary Hwy	Local Road
Ramp	4WD
Interstate Route	US Route
	State Route

1	2	3
4	5	6
7	8	

ADJOINING QUADRANGLES

- 1 Mount Hayes (C-4) SW
- 2 Mount Hayes (C-4) SE
- 3 Mount Hayes (C-3) SW
- 4 Mount Hayes (B-4) NW
- 5 Mount Hayes (B-3) NW
- 6 Mount Hayes (B-4) SW
- 7 Mount Hayes (B-4) SE
- 8 Mount Hayes (B-3) SW

MOUNT HAYES B-4 NE, AK  
2016

