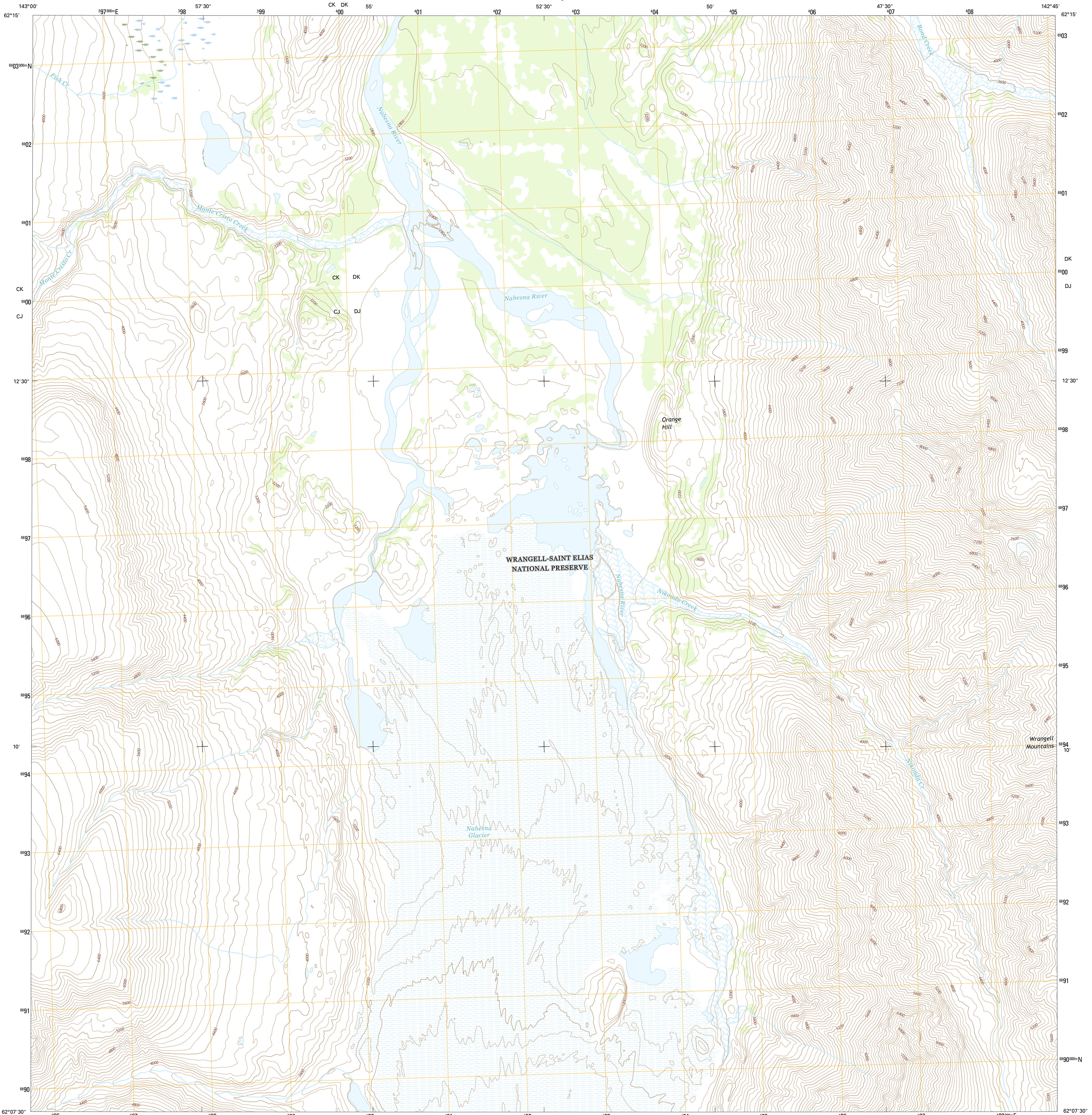




U.S. DEPARTMENT OF THE INTERIOR
U.S. GEOLOGICAL SURVEY



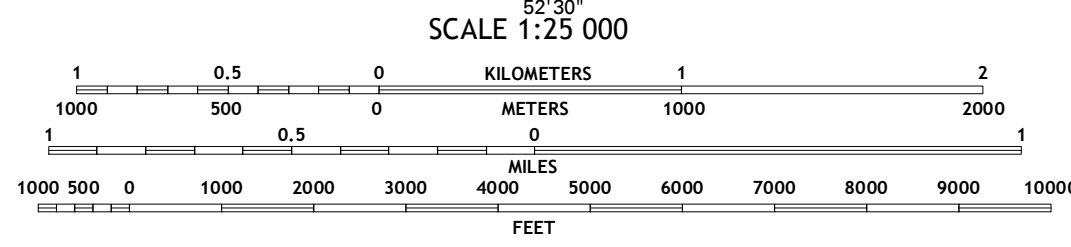
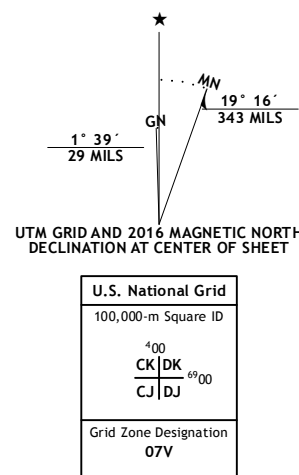
NABESNA A-4 NW QUADRANGLE
ALASKA
7.5-MINUTE SERIES



Produced by the United States Geological Survey
North American Datum of 1983 (NAD83)
World Geodetic System of 1984 (WGS84). Projection and
1 000-meter grid: Universal Transverse Mercator, Zone 07V
10 000-foot ticks: Alaska Coordinate System of 1983 (zone 3)

This map is not a legal document. Boundaries may be
generalized for this map scale. Private lands within government
reservations may not be shown. Obtain permission before
entering private lands.

Imagery.....SPOTD, 2009 - 2015
Roads.....Alaska Dept. of Transportation, 2014
Names.....GNIS, 2016
Hydrography.....National Hydrography Dataset, 2009
Contours.....National Elevation Dataset, 2012
Boundaries.....Multiple sources; see metadata file, 1950 - 2016
Public Land Survey System.....BLM, 2006 - 2008
Wetlands.....FWS National Wetlands Inventory 1977 - 2014

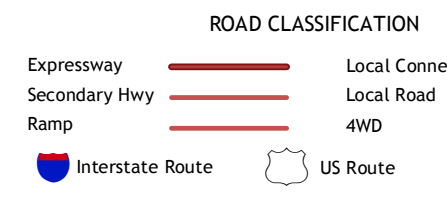


CONTOUR INTERVAL 80 FEET
NORTH AMERICAN DATUM OF 1988

This map was produced to conform with the
National Geospatial Program US Topo Product Standard, 2011.
A metadata file associated with this product is draft version 0.6.18



QUADRANGLE LOCATION



1	2	3	1 Nabesna (B-5) SE
4	5	2 Nabesna (B-4) SW	2 Nabesna (B-4) SE
6	7	3 Nabesna (A-5) SE	4 Nabesna (A-5) NE
		4 Nabesna (A-4) NE	5 Nabesna (A-5) SE
		5 Nabesna (A-4) NE	6 Nabesna (A-5) SE
		6 Nabesna (A-4) NE	7 Nabesna (A-4) SW
		7 Nabesna (A-4) SW	8 Nabesna (A-4) SE
		8 Nabesna (A-4) SE	

ADJOINING QUADRANGLES

NABESNA A-4 NW, AK
2016



NSN 7540-01-000-0000
USGS X 2 5 K 3 3 5 0 2 7