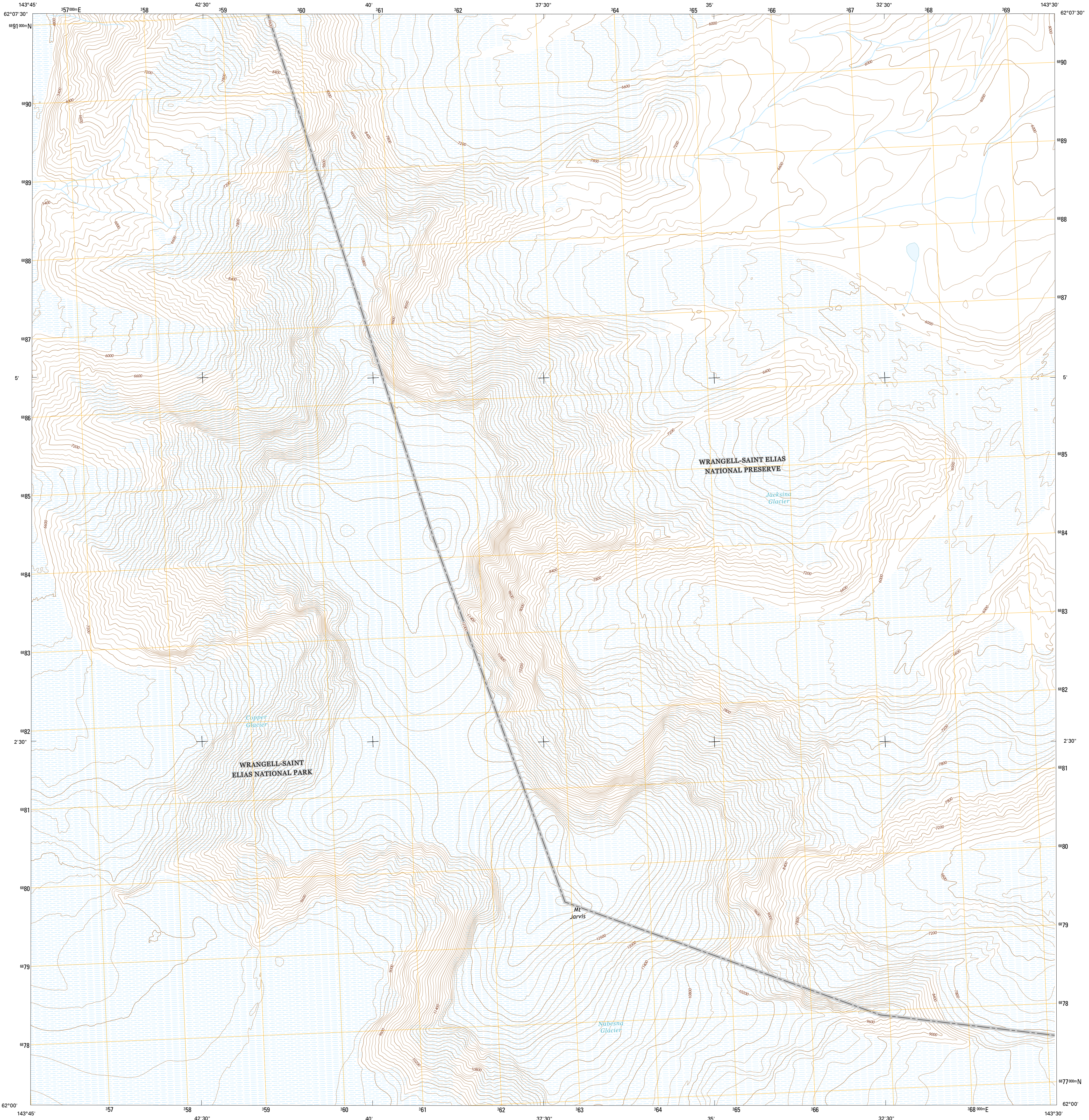




U.S. DEPARTMENT OF THE INTERIOR
U.S. GEOLOGICAL SURVEY



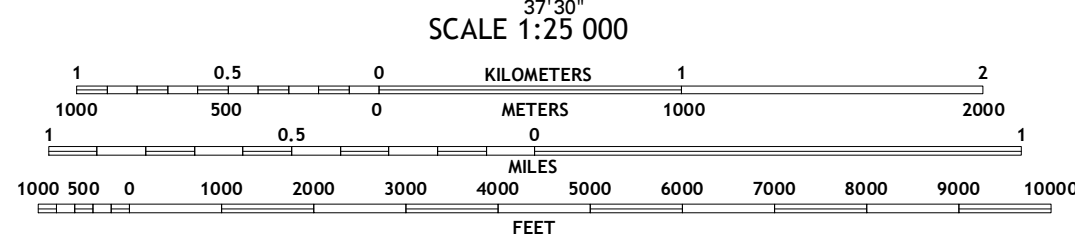
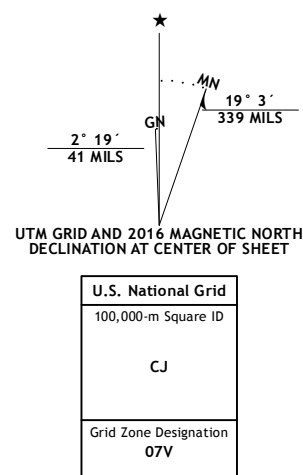
NABESNA A-6 SE QUADRANGLE
ALASKA
7.5-MINUTE SERIES



Produced by the United States Geological Survey
North American Datum of 1983 (NAD83)
Roads: Alaska Dept. of Transportation, 2014
Names: GNIS, 2016
Hydrography: National Hydrography Dataset, 2009
Contours: National Elevation Dataset, 2012
Boundaries: Multiple sources; see metadata file, 1950-2016
Public Land Survey System: BLM, 2006-2008
Wetlands: FWS National Wetlands Inventory 1977-2014

This map is not a legal document. Boundaries may be generalized for this map scale. Private lands within government reservations may not be shown. Obtain permission before entering private lands.

Imagery: SPOT, 2009 - 2015
Roads: Alaska Dept. of Transportation, 2014
Names: GNIS, 2016
Hydrography: National Hydrography Dataset, 2009
Contours: National Elevation Dataset, 2012
Boundaries: Multiple sources; see metadata file, 1950-2016
Public Land Survey System: BLM, 2006-2008
Wetlands: FWS National Wetlands Inventory 1977-2014



CONTOUR INTERVAL 120 FEET
NORTH AMERICAN VERTICAL DATUM OF 1988

This map was produced to conform with the National Geospatial Program US Topo Product Standard, 2011. A metadata file associated with this product is draft version 0.6.18



QUADRANGLE LOCATION

1	2	3
4	5	6
7	8	9

ADJOINING QUADRANGLES

1 Nabesna (A-6) NW
2 Nabesna (A-6) NE
3 Nabesna (A-5) NW
4 Nabesna (A-6) SW
5 Nabesna (A-5) SW
6 McCarthy (D-6) NE
and (D-8) NW, NE
and (D-7) NW, NE
7 McCarthy (D-7) NE
and (D-7) NW
8 McCarthy (D-7) NE
and (D-7) NW

ROAD CLASSIFICATION

Expressway	Local Connector
Secondary Hwy	Local Road
Ramp	4WD
Interstate Route	US Route
	State Route

NABESNA A-6 SE, AK
2016



NSN 7540-01-010-9400
NGA REF. NO. USGS X 2.5 K 3.5 0.1 B