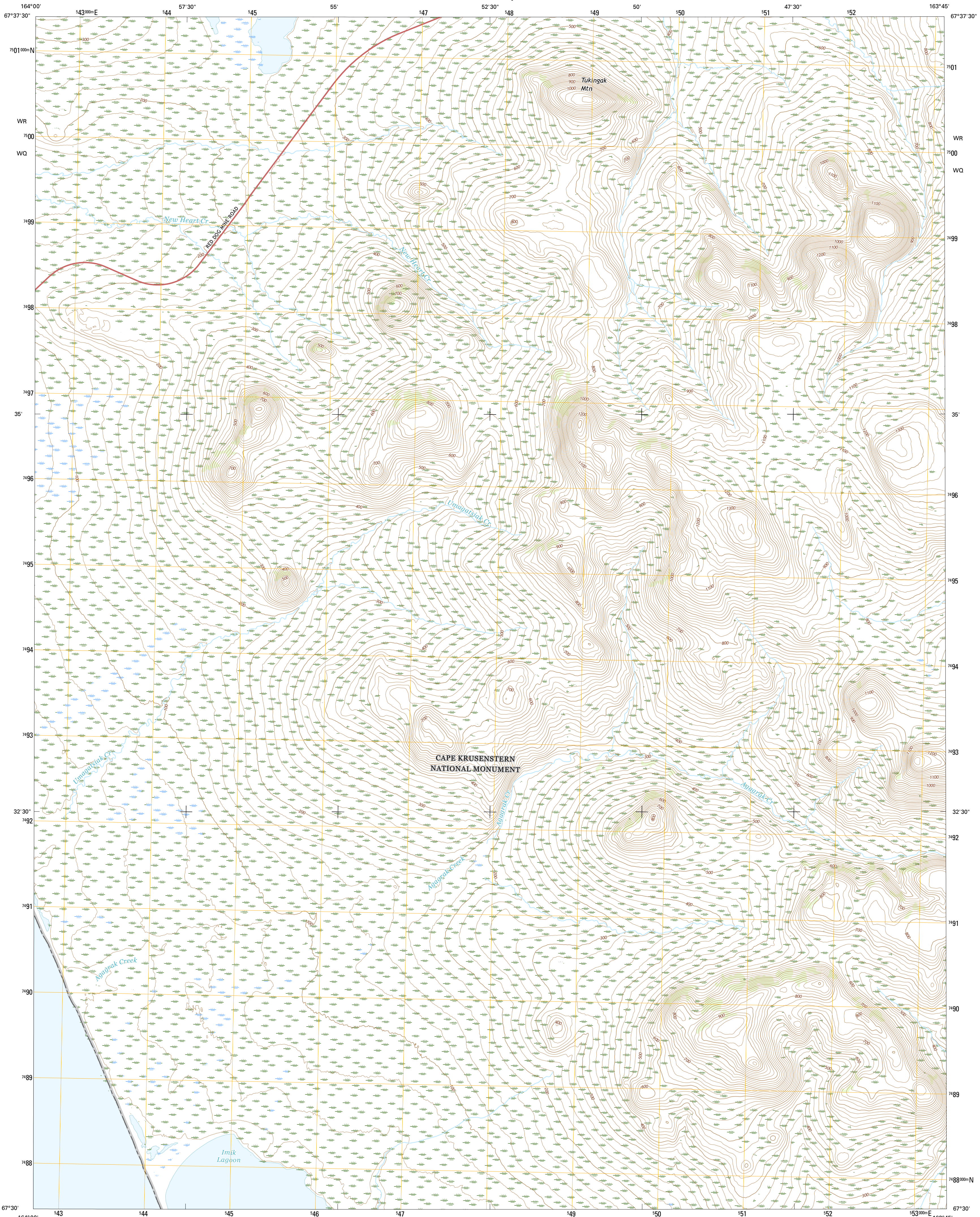




U.S. DEPARTMENT OF THE INTERIOR  
U.S. GEOLOGICAL SURVEY



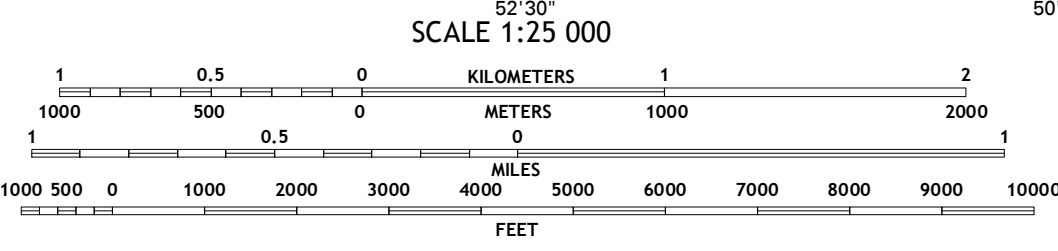
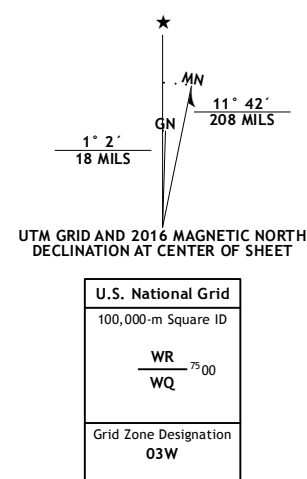
NOATAK C-4 SW QUADRANGLE  
ALASKA-NORTHWEST ARCTIC BOROUGH  
7.5-MINUTE SERIES



Produced by the United States Geological Survey  
North American Datum of 1983 (NAD83)  
World Geodetic System of 1984 (WGS84). Projection and  
1 000-meter grid: Universal Transverse Mercator, Zone 13W  
10 000-foot ticks: Alaska Coordinate System of 1983 (zone 6)

This map is not a legal document. Boundaries may be  
generalized for this map scale. Private lands within government  
reservations may not be shown. Obtain permission before  
entering private lands.

Imagery.....SPOTC, 2009 - 2015  
Roads.....Alaska Dept. of Transportation, 2014  
Names.....GNIS, 2016  
Hydrography.....National Hydrography Dataset, 2009  
Contours.....National Elevation Dataset, 2013  
Boundaries.....Multiple sources; see metadata file, 1950 - 2016  
Public Land Survey System.....BLM, 2006 - 2008  
Wetlands.....FWS National Wetlands Inventory 1977 - 2014



CONTOUR INTERVAL 20 FEET  
NORTH AMERICAN VERTICAL DATUM OF 1988  
This map was produced to conform with the  
National Geospatial Program US Topo Product Standard, 2011.  
A metadata file associated with this product is draft version 0.6.18



QUADRANGLE LOCATION

ROAD CLASSIFICATION

Expressway	Local Connector
Secondary Hwy	Local Road
Ramp	4WD
Interstate Route	US Route
	State Route

1	2	3	1 Noatak (C-5) NE
			2 Noatak (C-4) NW
			3 Noatak (C-4) NE
4	5	4 Noatak (C-5) SE	
			5 Noatak (C-4) SE
6	7	6	
			7 Noatak (B-4) NW
			8 Noatak (B-4) NE

ADJOINING QUADRANGLES

NOATAK C-4 SW, AK  
2016

