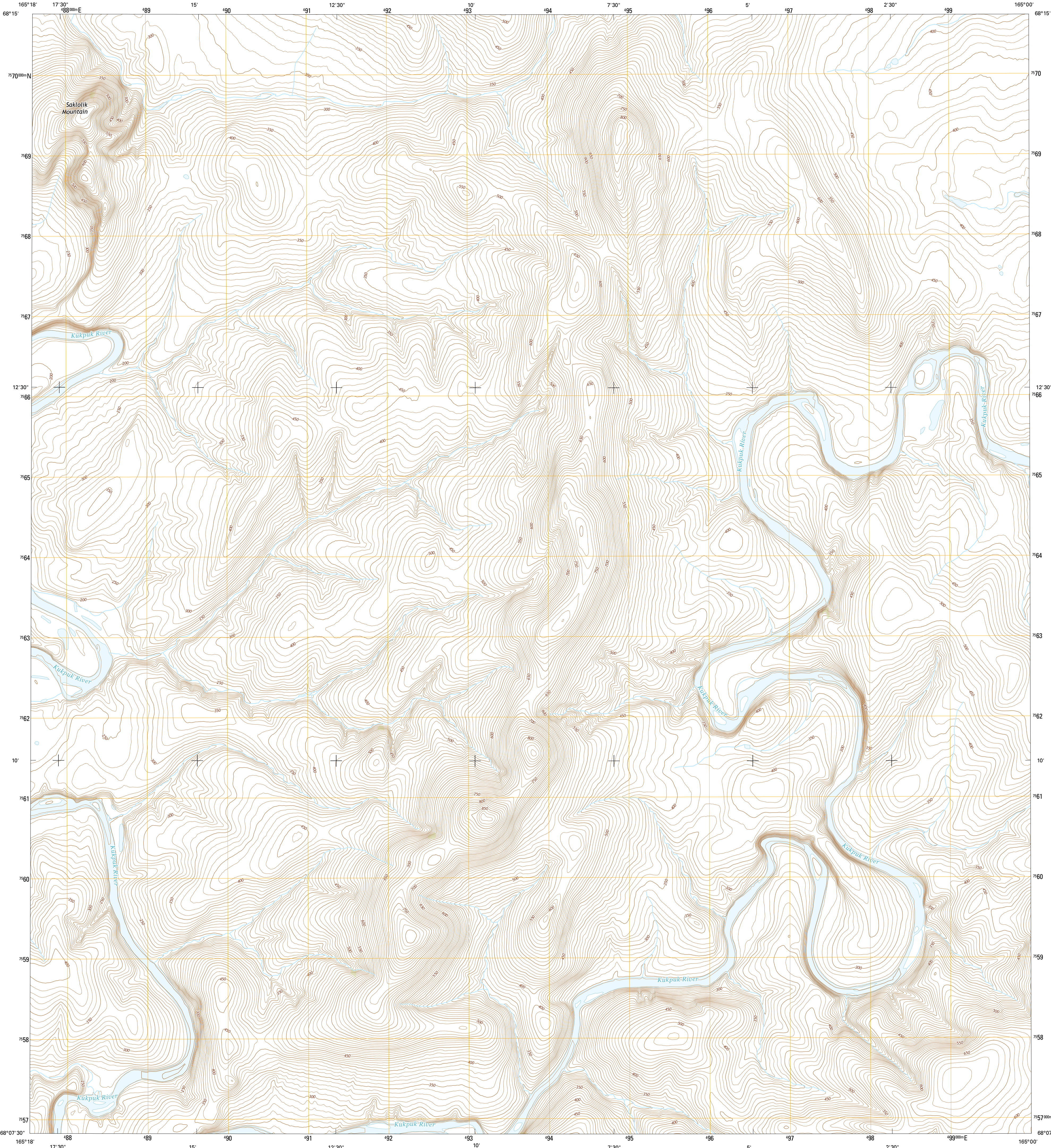




U.S. DEPARTMENT OF THE INTERIOR
U.S. GEOLOGICAL SURVEY



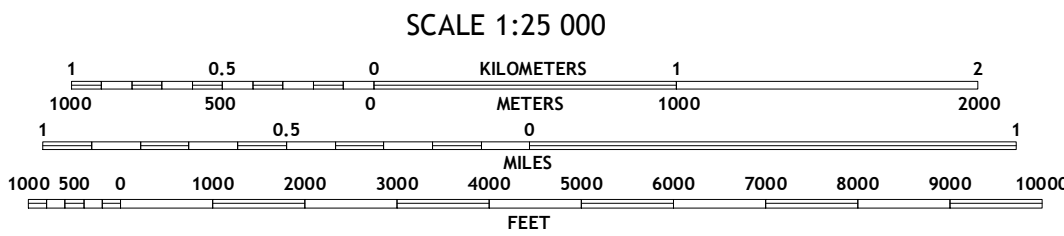
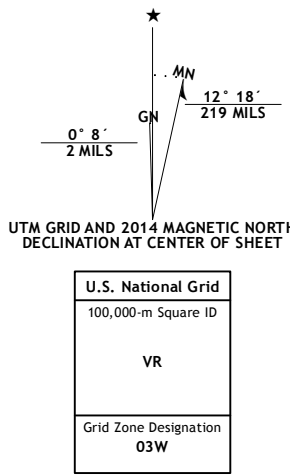
POINT HOPE A-1 NE QUADRANGLE
ALASKA-NORTH SLOPE BOROUGH
7.5-MINUTE SERIES



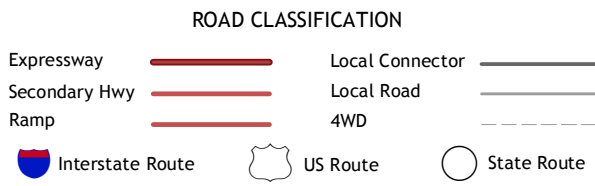
Produced by the United States Geological Survey
North American Datum of 1983 (NAD83)
World Geodetic System of 1984 (WGS84). Projection and
1 000-meter grid: Universal Transverse Mercator, Zone 03W

This map is not a legal document. Boundaries may be generalized
for this map scale. Private lands within government reservations
may not be shown. Obtain permission before entering private lands

Imagery.....SPOT, ©2010
Roads.....Alaska Dept. of Transportation, 2013
Names.....GNIS, 2013
Hydrography.....National Hydrography Dataset, 2010
Contours.....National Elevation Dataset, 2013
Boundaries.....Multiple sources; see metadata file, 1950 - 2012
Public Land Survey System.....BLM, 2006 - 2008



QUADRANGLE LOCATION



1	2	3
4	5	6
7	8	9

ADJOINING QUADRANGLES

- 1 Point Hope (B-1) SW
- 2 Point Hope (B-1) SE
- 3 De Long Mountains (B-5) SW
- 4 Point Hope (A-1) NW
- 5 De Long Mountains (A-5) NW
- 6 Point Hope (A-1) SW
- 7 Point Hope (A-1) SE
- 8 De Long Mountains (A-5) SW

POINT HOPE A-1 NE, AK
2014

