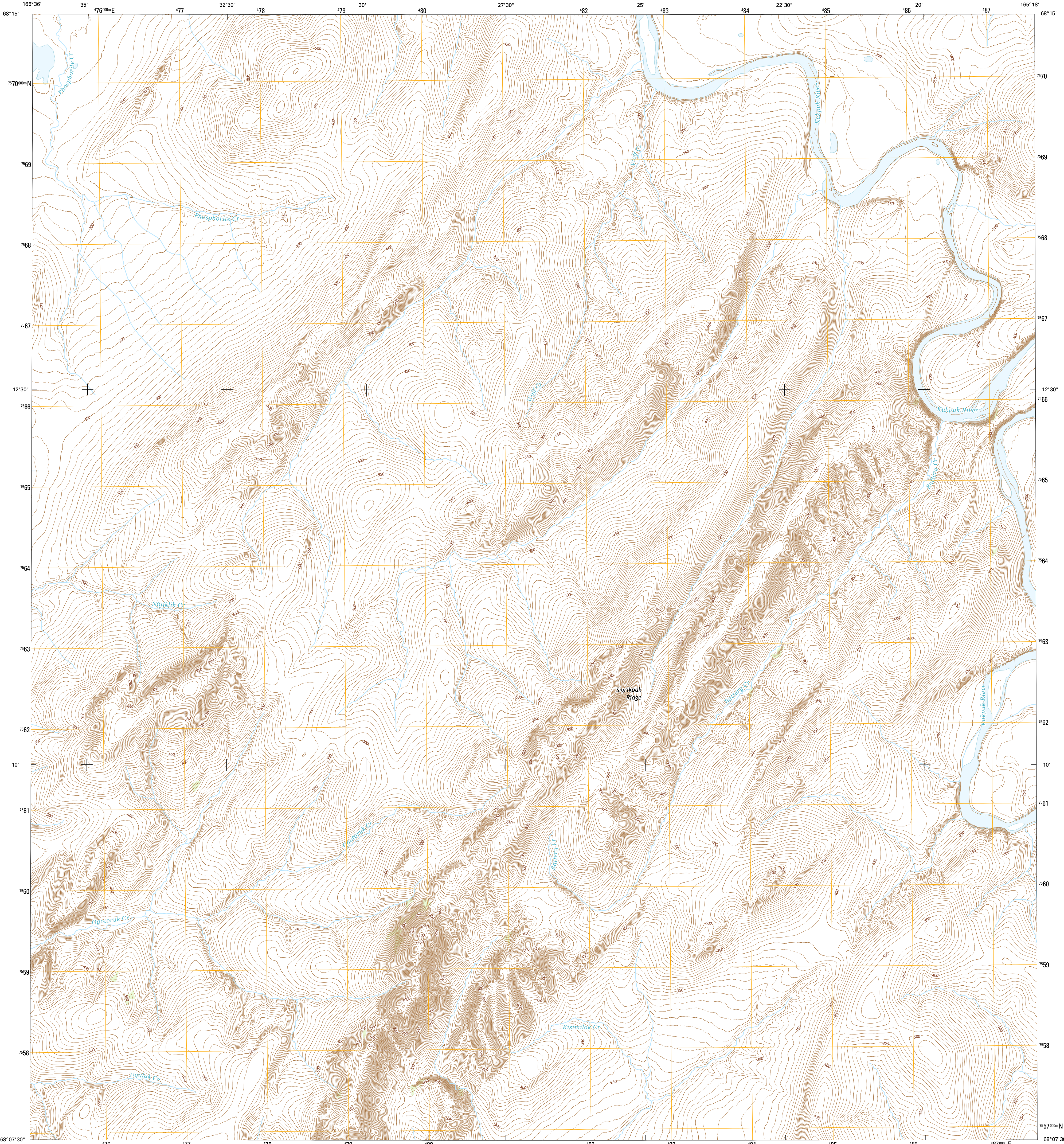




U.S. DEPARTMENT OF THE INTERIOR  
U.S. GEOLOGICAL SURVEY



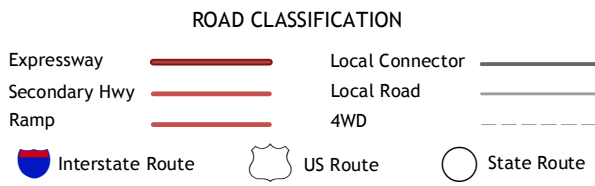
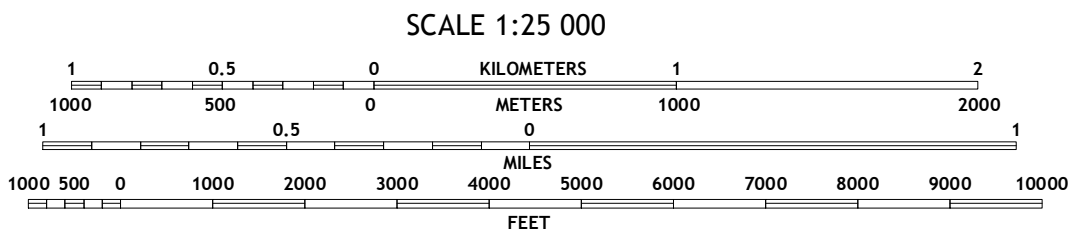
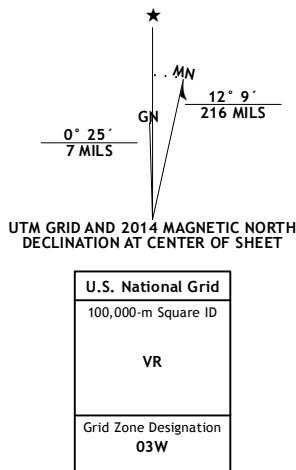
POINT HOPE A-1 NW QUADRANGLE  
ALASKA-NORTH SLOPE BOROUGH  
7.5-MINUTE SERIES



Produced by the United States Geological Survey  
North American Datum of 1983 (NAD83)  
World Geodetic System of 1984 (WGS84). Projection and  
1 000-meter grid: Universal Transverse Mercator, Zone 03W

This map is not a legal document. Boundaries may be generalized  
for this map scale. Private lands within government reservations  
may not be shown. Obtain permission before entering private lands

Imagery.....SPOT, ©2010  
Roads.....Alaska Dept. of Transportation, 2013  
Names.....GNIS, 2013  
Hydrography.....National Hydrography Dataset, 2010  
Contours.....National Elevation Dataset, 2013  
Boundaries.....Multiple sources; see metadata file, 1950 - 2012  
Public Land Survey System.....BLM, 2006 - 2008



1	2	3
4		5
6	7	8

ADJOINING QUADRANGLES

1 Point Hope (B-2) SE  
2 Point Hope (B-1) SW  
3 Point Hope (B-1) SE  
4 Point Hope (A-2) NE  
5 Point Hope (A-1) NE  
6 Point Hope (A-2) SE  
7 Point Hope (A-1) SW  
8 Point Hope (A-1) SE

POINT HOPE A-1 NW, AK  
2014

