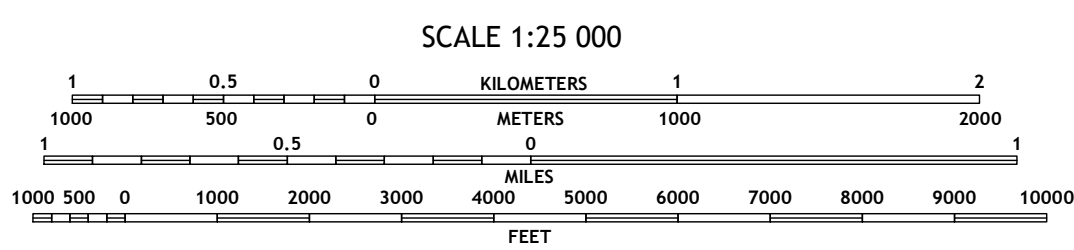
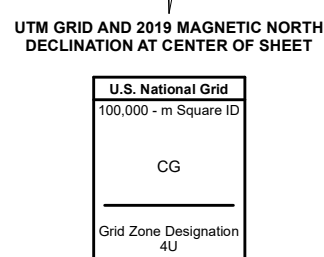
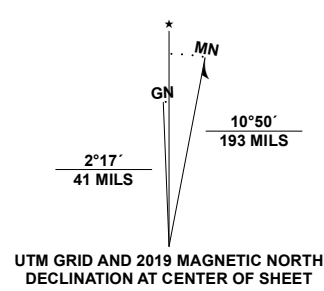


**Produced by the United States Geological Survey**

North American Datum of 1983 (NAD83)  
World Geodetic System of 1984 (WGS84). Projection and  
1 000-meter grid/Universal Transverse Mercator, Zone 4U  
This map is not a legal document. Boundaries may be  
generalized for this map scale. Private lands within government  
reservations may not be shown. Obtain permission before  
entering private lands.

Imagery.....SPOT, © July 2016  
Roads.....Alaska Dept. of Transportation, Not Available  
Names.....GNS, 2000 - 2011  
Hydrography.....National Hydrography Dataset, 2002 - 2015  
Contours.....National Elevation Dataset, 2019  
Boundaries.....Multiple sources; see metadata file 2018 - 2019  
Public Land Survey System.....BLM, 2008  
Wetlands.....FWS National Wetlands Inventory Not Available



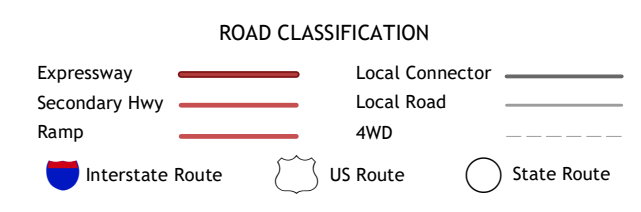
CONTOUR INTERVAL 10 FEET  
NORTH AMERICAN VERTICAL DATUM OF 1988

This map was produced to conform with the  
National Geospatial Program US Topo Product Standard, 2011.  
A metadata file associated with this product is draft version 0.6.17



1	2	3
4	5	6
7	8	

1 Port Moller D-6 NW  
2 Port Moller D-6 NE  
3 Port Moller D-5 NW  
4 Port Moller D-5 SW  
5 Port Moller D-5 SE  
6 Port Moller C-6 NW  
7 Port Moller C-6 NE  
8 Port Moller C-5 NW



**PORT MOLLER D-6 SE, AK**  
2020

