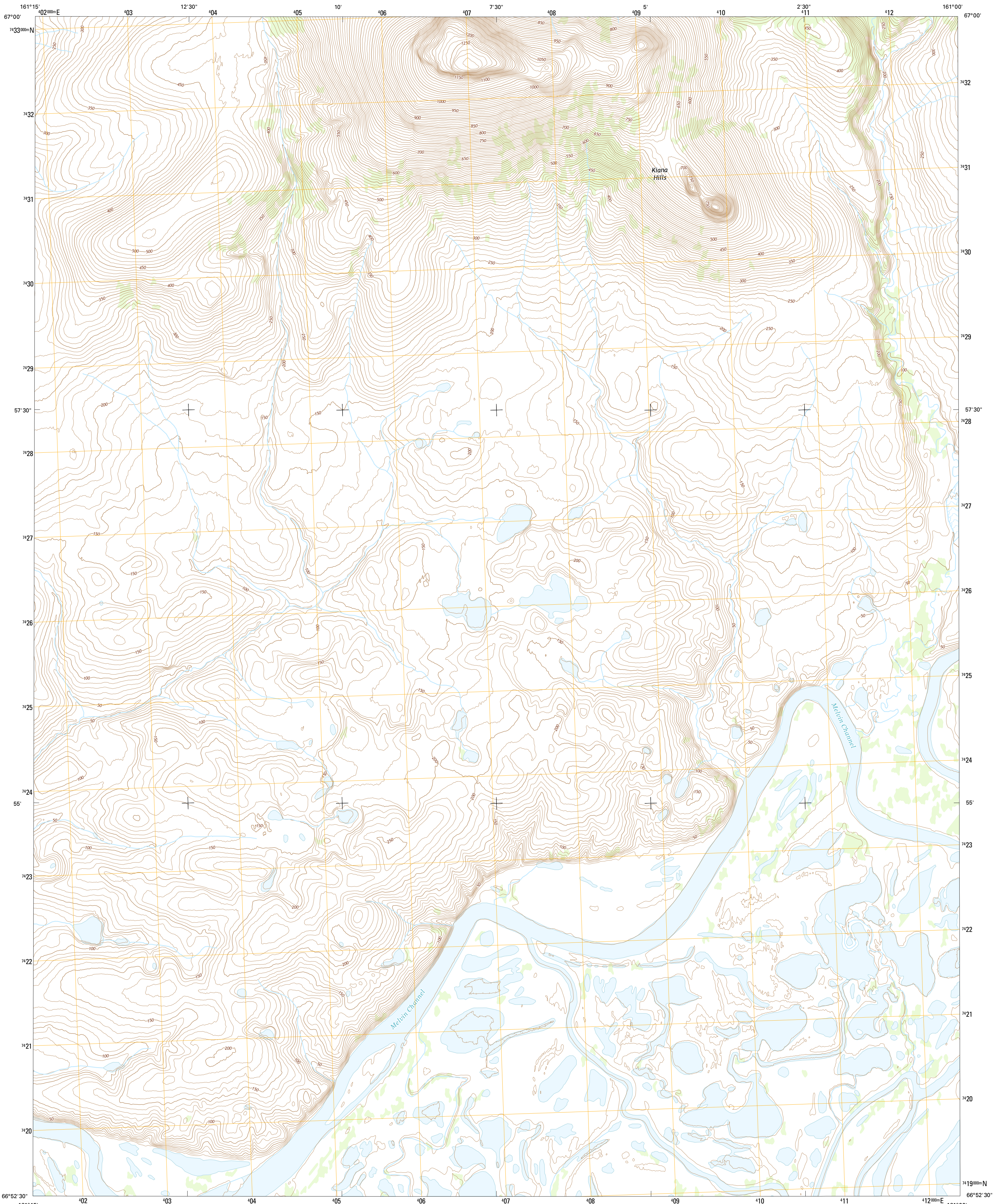




U.S. DEPARTMENT OF THE INTERIOR
U.S. GEOLOGICAL SURVEY



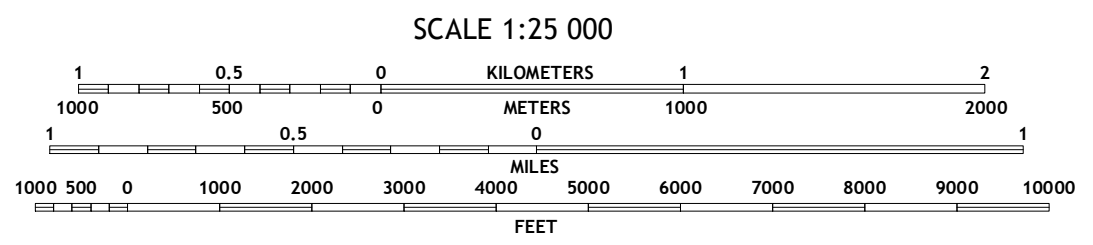
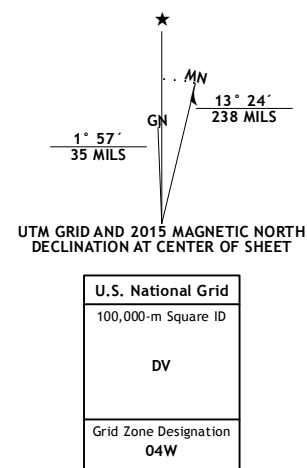
SELAWIK D-5 NE QUADRANGLE
ALASKA-NORTHWEST ARCTIC BOROUGH
7.5-MINUTE SERIES



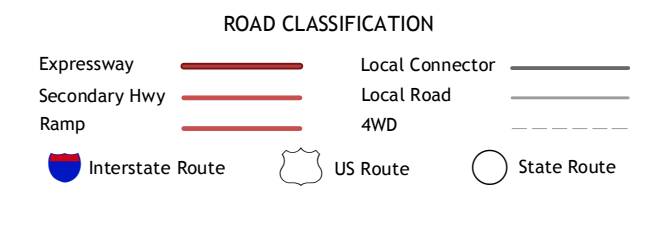
Produced by the United States Geological Survey
North American Datum of 1983 (NAD83)
World Geodetic System of 1984 (WGS84). Projection and
1 000-meter grid: Universal Transverse Mercator, Zone 04W

This map is not a legal document. Boundaries may be generalized
for this map scale. Private lands within government reservations
may not be shown. Obtain permission before entering private lands

Imagery.....SPOT, ©2009
Roads.....Alaska Dept. of Transportation, 2013
Names.....GNIS, 2015
Hydrography.....National Hydrography Dataset, 2009
Contours.....National Elevation Dataset, 2013
Boundaries.....Multiple sources; see metadata file, 1950 - 2015
Public Land Survey System.....BLM, 2006 - 2008



QUADRANGLE LOCATION



CONTOUR INTERVAL 10 FEET
NORTH AMERICAN VERTICAL DATUM OF 1988
CONTOURS MAY NOT MEET NATIONAL MAP ACCURACY STANDARDS

This map was produced to conform with the
National Geospatial Program US Topo Product Standard, 2011.
A metadata file associated with this product is draft version 0.6.17

1	2	3
4	5	6
7	8	

ADJOINING QUADRANGLES

SELAWIK D-5 NE, AK
2015

