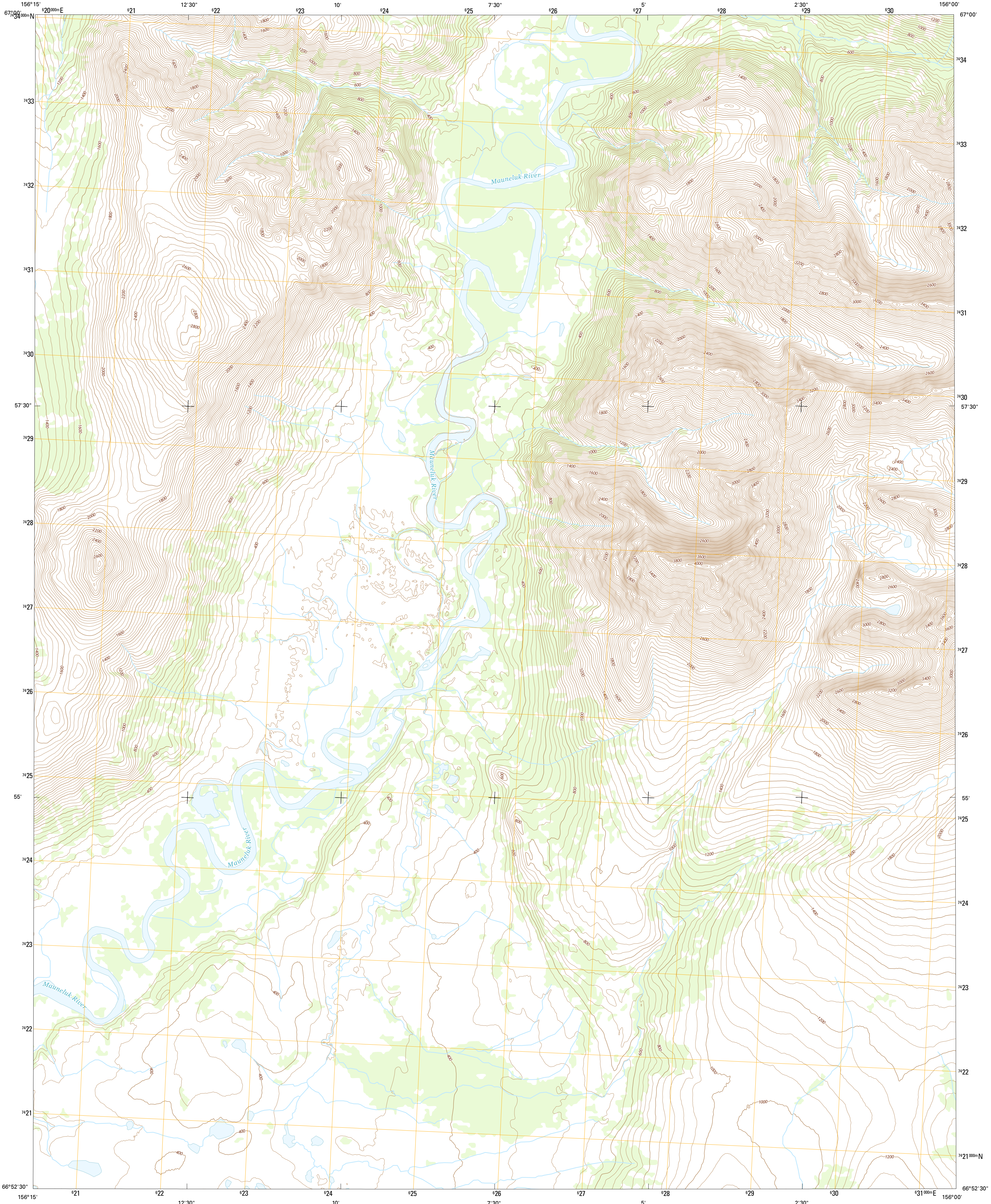




U.S. DEPARTMENT OF THE INTERIOR
U.S. GEOLOGICAL SURVEY



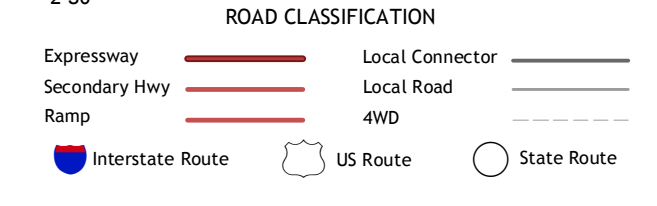
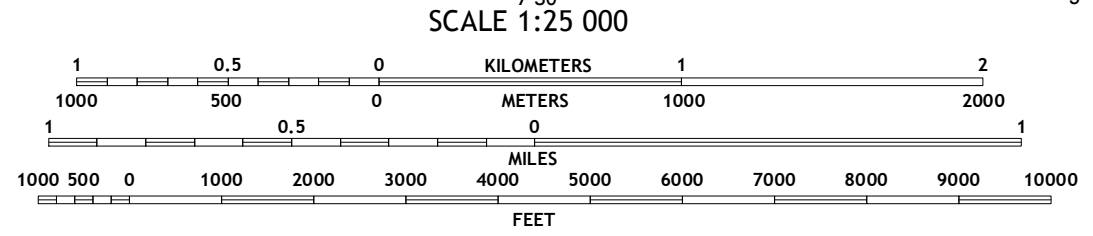
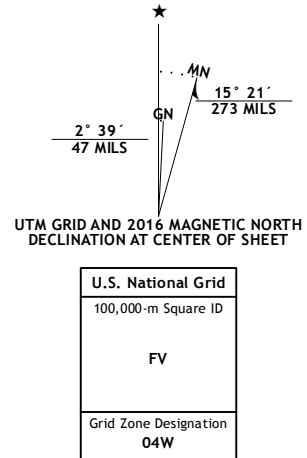
SHUNGNAK D-1 NE QUADRANGLE
ALASKA-NORTHWEST ARCTIC BOROUGH
7.5-MINUTE SERIES



Produced by the United States Geological Survey
North American Datum of 1983 (NAD83)
World Geodetic System of 1984 (WGS84). Projection and
1 000-meter grid: Universal Transverse Mercator, Zone 6W
10 000-foot ticks: Alaska Coordinate System of 1983 (zone 6)

This map is not a legal document. Boundaries may be
generalized for this map scale. Private lands within government
reservations may not be shown. Obtain permission before
entering private lands.

Imagery..... SPOT6, 2009 - 2015
Roads..... Alaska Dept. of Transportation, 2014
Names..... GNIS, 2016
Hydrography..... National Hydrography Dataset, 2010
Contours..... National Elevation Dataset, 2016
Boundaries..... Multiple sources; see metadata file, 1950 - 2016
Public Land Survey System..... BLM, 2006 - 2008
Wetlands..... FWS National Wetlands Inventory 1977 - 2014



1	2	3	4	5
6	7	8	9	10

1 Ambler River (A-1) SW
2 Ambler River (A-1) SE
3 Survey Pass (A-6) SW
4 Shungnak (D-1) NW
5 Hughes (D-6) NW
6 Shungnak (D-1) SW
7 Shungnak (D-1) SE
8 Hughes (D-6) SW

SHUNGNAK D-1 NE, AK
2016

