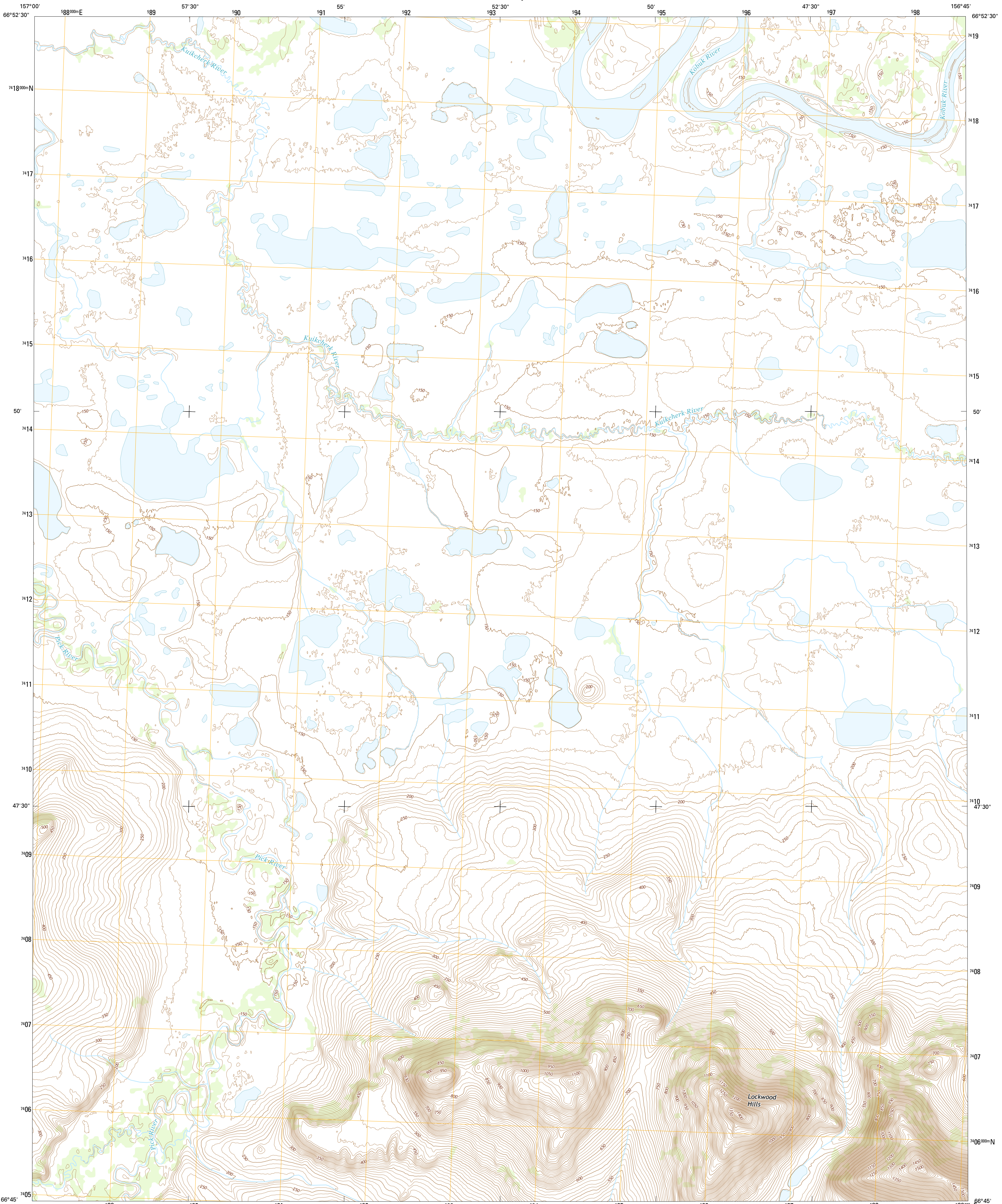




U.S. DEPARTMENT OF THE INTERIOR
U.S. GEOLOGICAL SURVEY



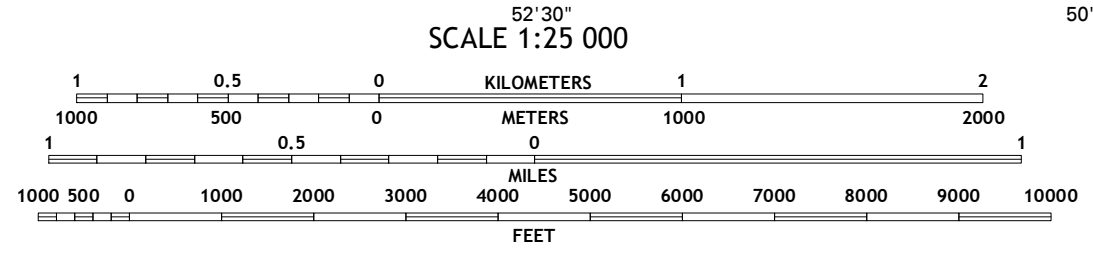
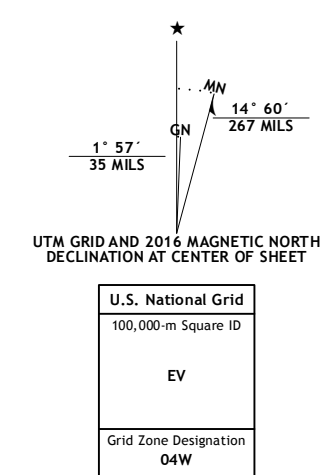
SHUNGNAK D-2 SW QUADRANGLE
ALASKA-NORTHWEST ARCTIC BOROUGH
7.5-MINUTE SERIES



Produced by the United States Geological Survey
North American Datum of 1983 (NAD83)
World Geodetic System of 1984 (WGS84). Projection and
1 000-meter grid: Universal Transverse Mercator, Zone 46y
10 000-foot ticks: Alaska Coordinate System of 1983 (zone 6)

This map is not a legal document. Boundaries may be
generalized for this map scale. Private lands within government
reservations may not be shown. Obtain permission before
entering private lands.

Imagery.....SPOT, 2009 - 2015
Roads.....Alaska Dept. of Transportation, 2014
Names.....GNIS, 2016
Hydrography.....National Hydrography Dataset, 2010
Contours.....National Elevation Dataset, 2016
Boundaries.....Multiple sources; see metadata file, 1950
Public Land Survey System.....BLM, 2006 - 2008
Wetlands.....FWS National Wetlands Inventory 1977 - 2014



ROAD CLASSIFICATION

Expressway	Local Connector
Secondary Hwy	Local Road
Ramp	4WD
Interstate Route	US Route
	State Route

ADJOINING QUADRANGLES

1	2	3
4	5	6
7	8	

1 Shungnak (D-3) NE
2 Shungnak (D-2) NW
3 Shungnak (D-2) NE
4 Shungnak (D-3) SE
5 Shungnak (D-2) SE
6 Shungnak (C-3) NE
7 Shungnak (C-2) NW
8 Shungnak (C-2) NE

SHUNGNAK D-2 SW, AK
2016

