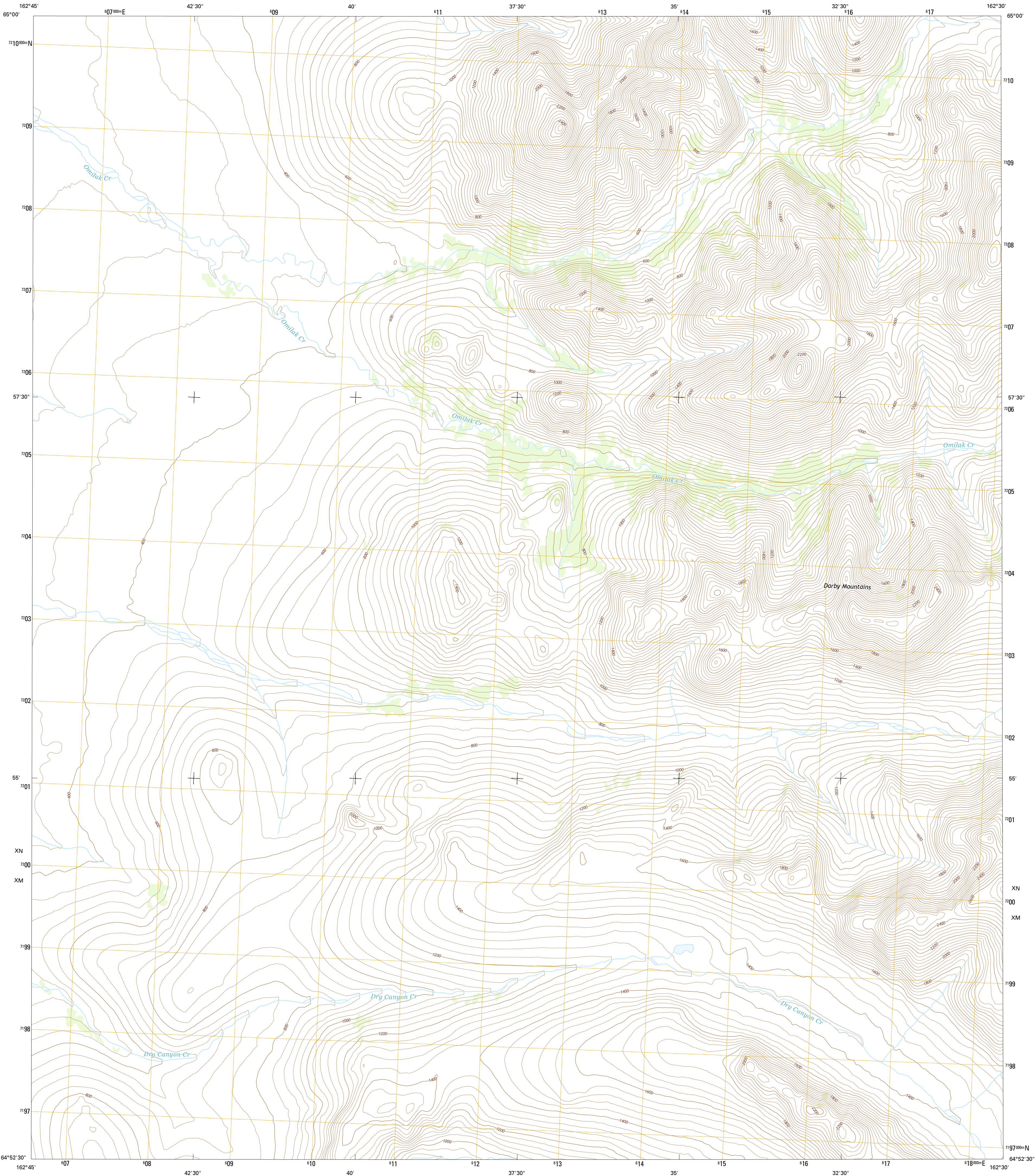




U.S. DEPARTMENT OF THE INTERIOR
U.S. GEOLOGICAL SURVEY



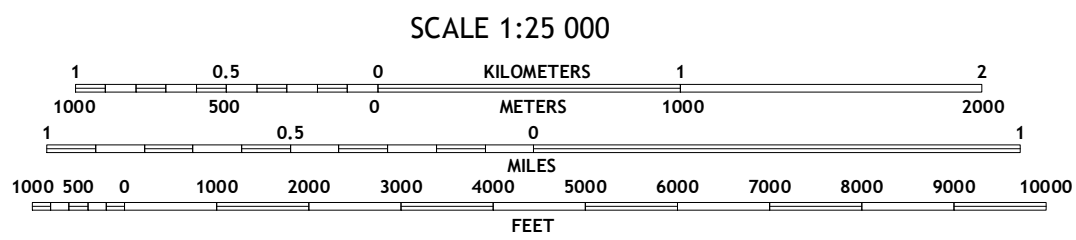
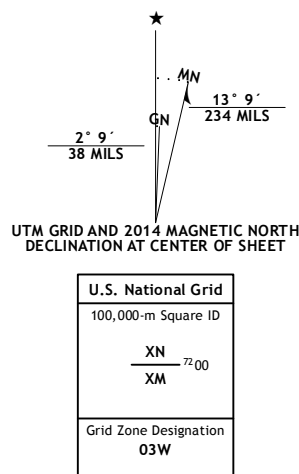
SOLOMON D-2 NE QUADRANGLE
ALASKA
7.5-MINUTE SERIES



Produced by the United States Geological Survey
North American Datum of 1983 (NAD83).
World Geodetic System of 1984 (WGS84). Projection and
1 000-meter grid: Universal Transverse Mercator, Zone 03W

This map is not a legal document. Boundaries may be generalized
for this map scale. Private lands within government reservations
may not be shown. Obtain permission before entering private lands

Imagery.....SPOT, ©2009
Roads.....Alaska Dept. of Transportation, 2013
Names.....GNIS, 2013
Hydrography.....National Hydrography Dataset, 2009
Contours.....National Elevation Dataset, 2013
Boundaries.....Multiple sources; see metadata file, 1950 - 2012
Public Land Survey System.....BLM, 2006 - 2008



CONTOUR INTERVAL 40 FEET
NORTH AMERICAN VERTICAL DATUM OF 1988

This map was produced to conform with the
National Geospatial Program US Topo Product Standard, 2011.
A metadata file associated with this product is draft version 0.6.17

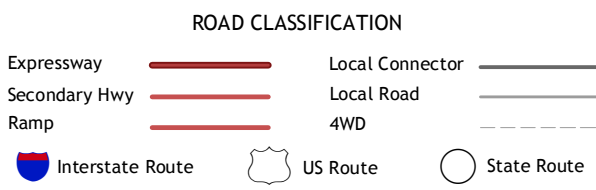


QUADRANGLE LOCATION

1	2	3
4		5
6	7	8

ADJOINING QUADRANGLES

1 Bendeleben (A-2) SW
2 Bendeleben (A-2) SE
3 Bendeleben (A-1) SW
4 Solomon (D-2) NW
5 Solomon (D-1) NW
6 Solomon (D-2) SW
7 Solomon (D-2) SE
8 Solomon (D-1) SW



SOLOMON D-2 NE, AK
2014

