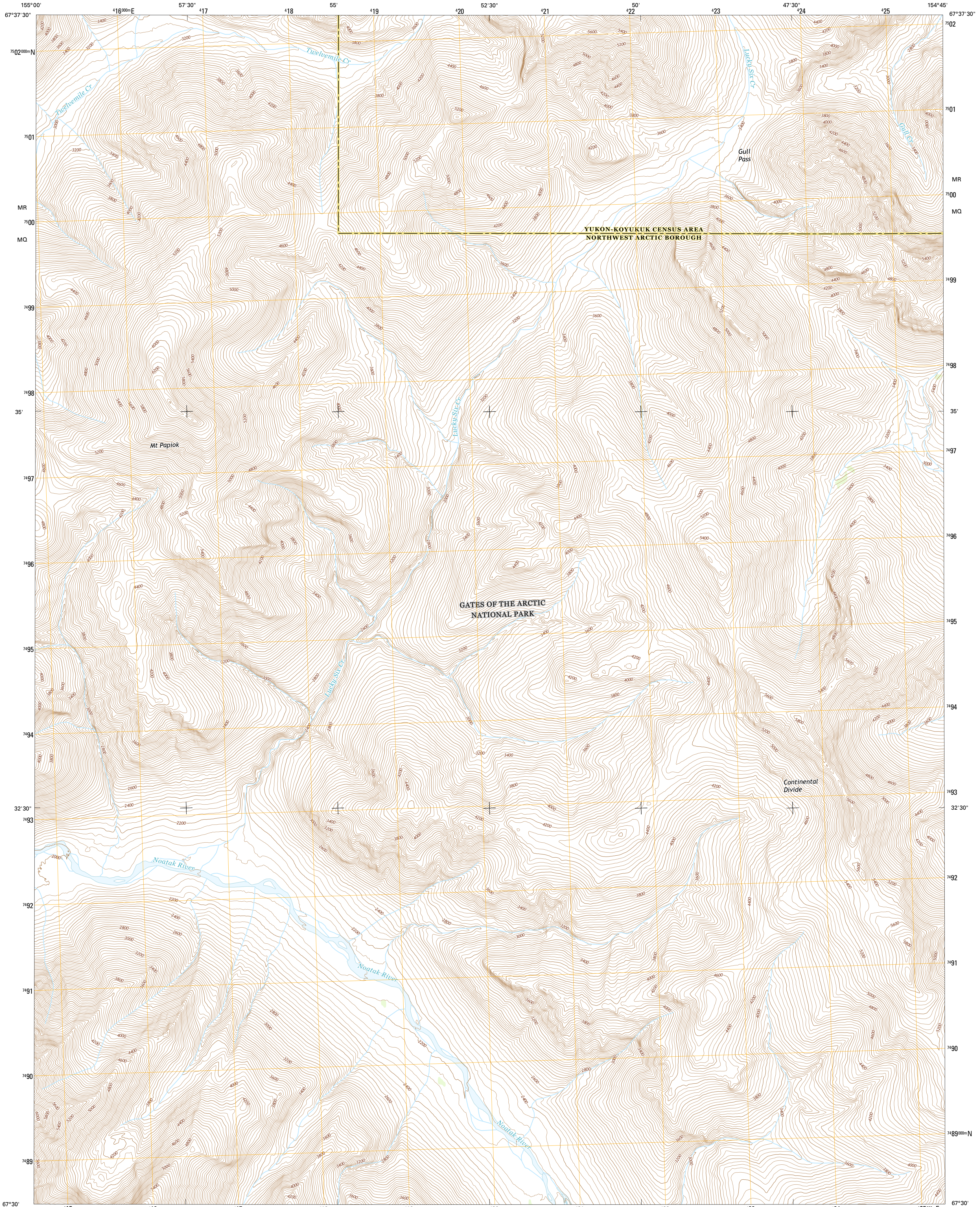




U.S. DEPARTMENT OF THE INTERIOR
U.S. GEOLOGICAL SURVEY



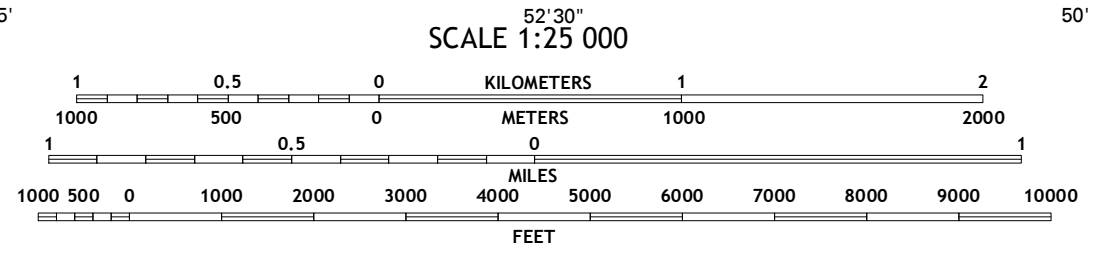
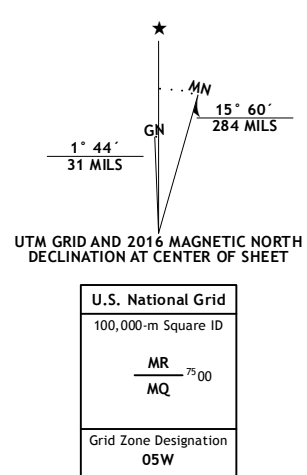
SURVEY PASS C-4 SW QUADRANGLE
ALASKA
7.5-MINUTE SERIES



Produced by the United States Geological Survey
 North American Datum of 1983 (NAD83)
 World Geodetic System of 1984 (WGS84), Projection and
 1 000-meter grid: Universal Transverse Mercator, Zone 09W
 10 000-foot ticks: Alaska Coordinate System of 1983 (zones 6
 and 4)

This map is not a legal document. Boundaries may be
 generalized for this map scale. Private lands within government
 reservations may not be shown. Obtain permission before
 entering private lands.

IMAGERY: SPOTc, 2009 - 2015
 Roads: Alaska Dept. of Transportation, 2014
 Names: GNIS, 2016
 Hydrography: National Hydrography Dataset, 2013
 Contours: National Elevation Dataset, 2015
 Boundaries: Multiple sources; see metadata file, 1950 - 2016
 Public Land Survey System: BLM, 2006 - 2008
 Wetlands: FWS National Wetlands Inventory 1977 - 2014



ROAD CLASSIFICATION			
Expressway	Local Connector		
Secondary Hwy	Local Road		
Ramp	4WD		
Interstate Route	US Route	State Route	

1	2	3	4	5
6	7	8	7	8

ADJOINING QUADRANGLES

CONTOUR INTERVAL 40 FEET
 NORTH AMERICAN VERTICAL DATUM OF 1988

This map was produced to conform with the
 National Geospatial Program US Topo Product Standard, 2011.
 A metadata file associated with this product is draft version 0.6.18

SURVEY PASS C-4 SW, AK
 2016

