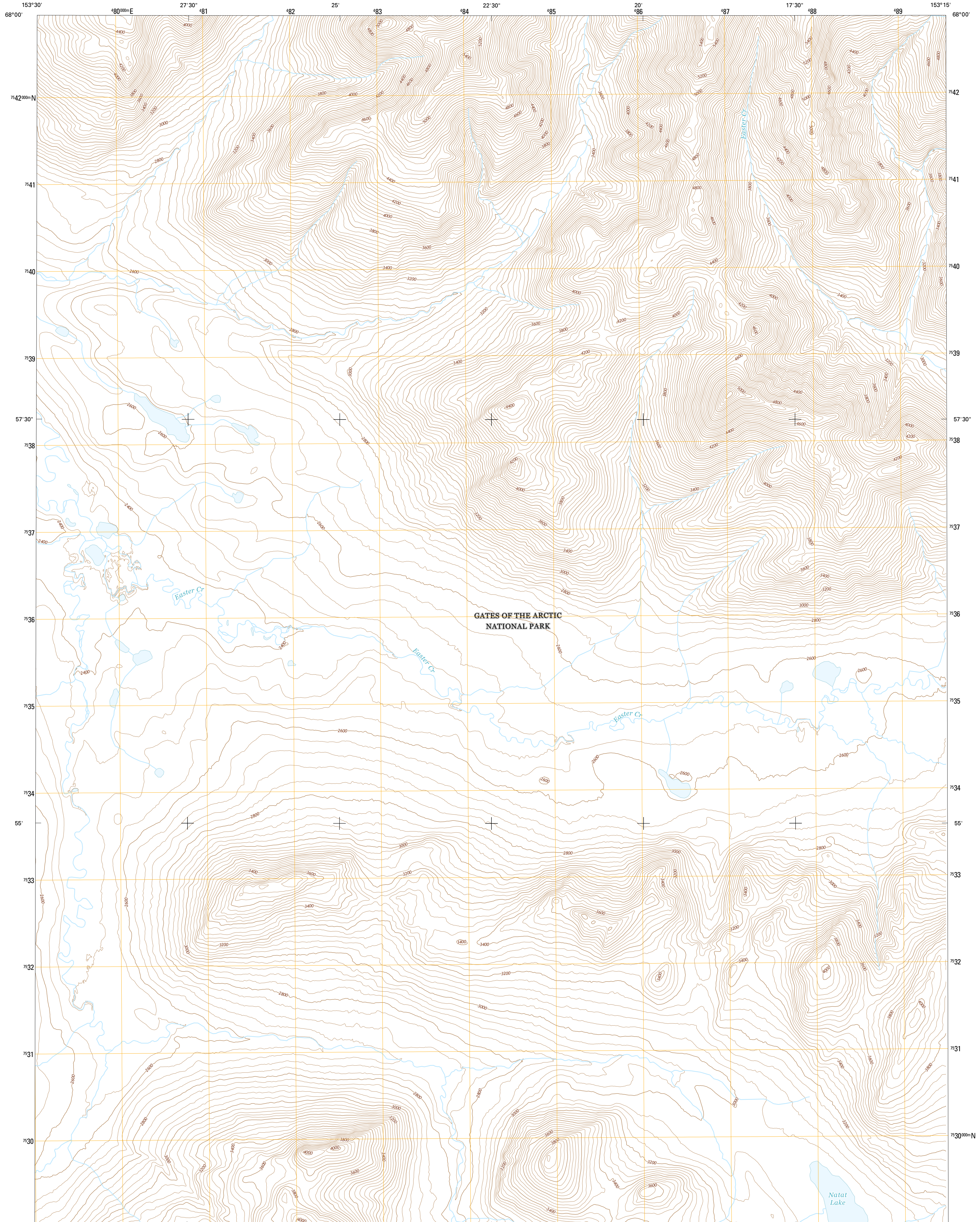




U.S. DEPARTMENT OF THE INTERIOR  
U.S. GEOLOGICAL SURVEY



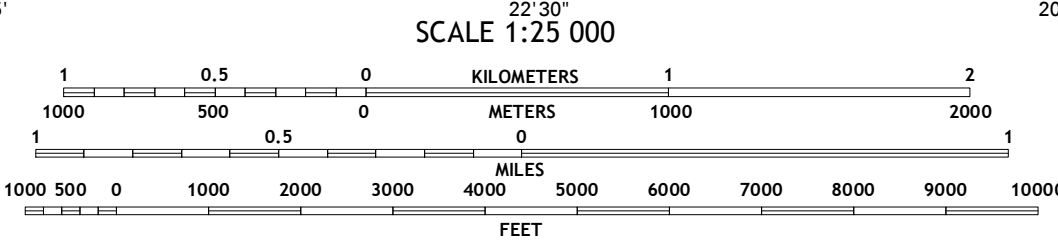
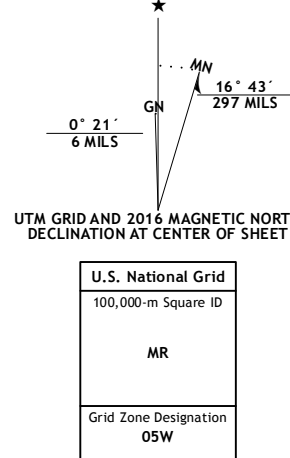
SURVEY PASS D-1 NW QUADRANGLE  
ALASKA  
7.5-MINUTE SERIES



Produced by the United States Geological Survey  
North American Datum of 1983 (NAD83)  
World Geodetic System of 1984 (WGS84), Projection and  
1000-meter grid: Universal Transverse Mercator, Zone 09W  
10 000-foot ticks: Alaska Coordinate System of 1983 (zone 4)

This map is not a legal document. Boundaries may be  
generalized for this map scale. Private lands within government  
reservations may not be shown. Obtain permission before  
entering private lands.

Imagery.....SPOTC, 2009 - 2015  
Roads.....Alaska Dept. of Transportation, 2014  
Names.....GNIS, 2016  
Hydrography.....National Hydrography Dataset, 2010  
Contours.....National Elevation Dataset, 2015  
Boundaries.....Multiple sources; see metadata file, 1950 - 2016  
Public Land Survey System.....BLM, 2006 - 2008  
Wetlands.....FWS National Wetlands Inventory 1977 - 2014

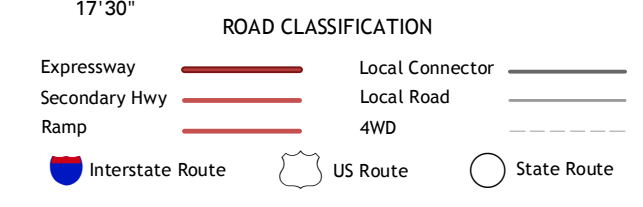


CONTOUR INTERVAL 40 FEET  
NORTH AMERICAN VERTICAL DATUM OF 1988

This map was produced to conform with the  
National Geospatial Program US Topo Product Standard, 2011.  
A metadata file associated with this product is draft version 0.6.18



QUADRANGLE LOCATION



1	2	3	1 KIUIV River (A-1) SW and (A-2) SE
4	5	6	2 KIUIV River (A-1) SW and (A-1) SE
7	8	8	3 KIUIV River (A-1) SE
			4 Survey Pass (D-2) NE
			5 Survey Pass (D-1) NE
			6 Survey Pass (D-2) SE
			7 Survey Pass (D-1) SW
			8 Survey Pass (D-1) SE

ADJOINING QUADRANGLES

SURVEY PASS D-1 NW, AK  
2016

