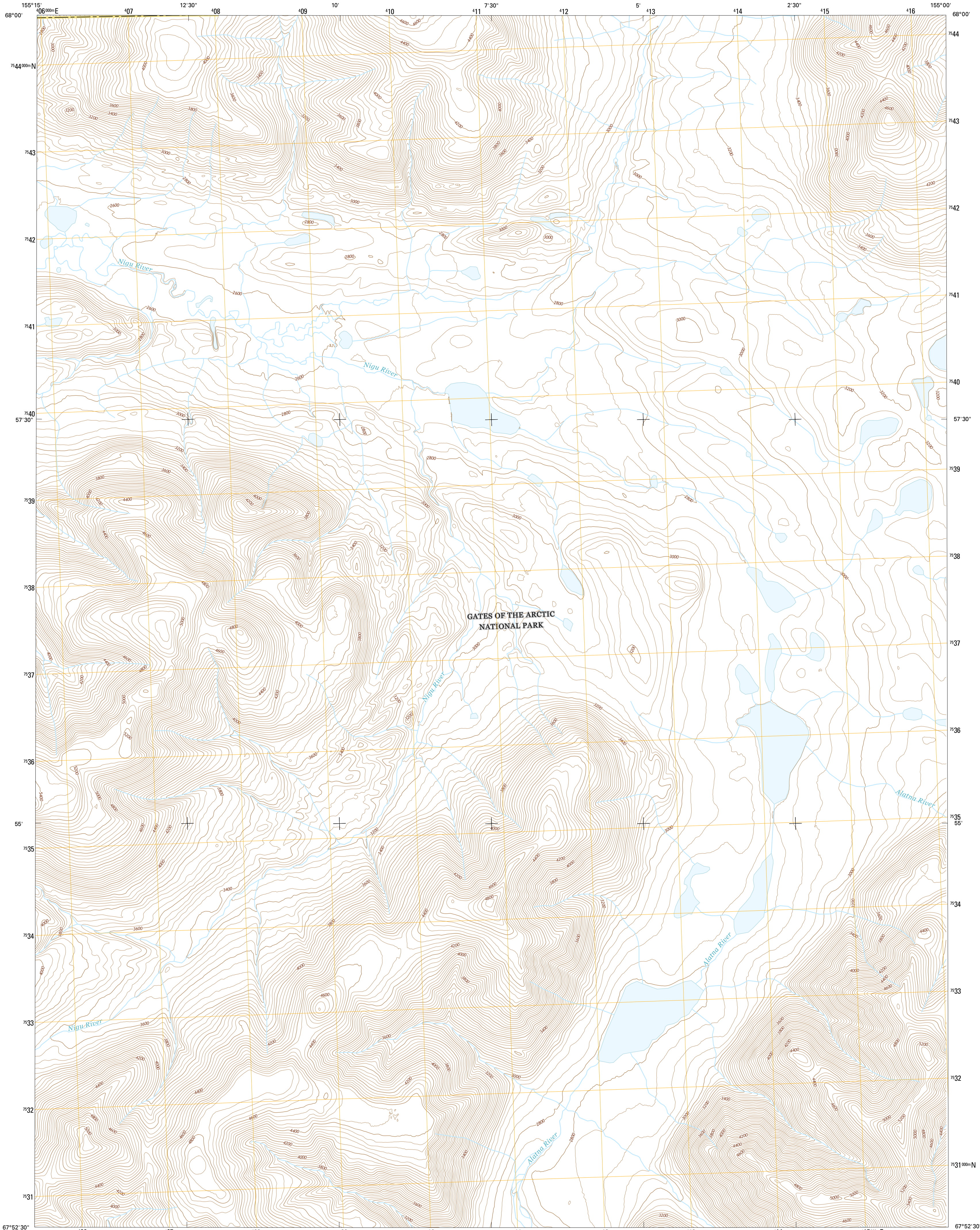




U.S. DEPARTMENT OF THE INTERIOR
U.S. GEOLOGICAL SURVEY



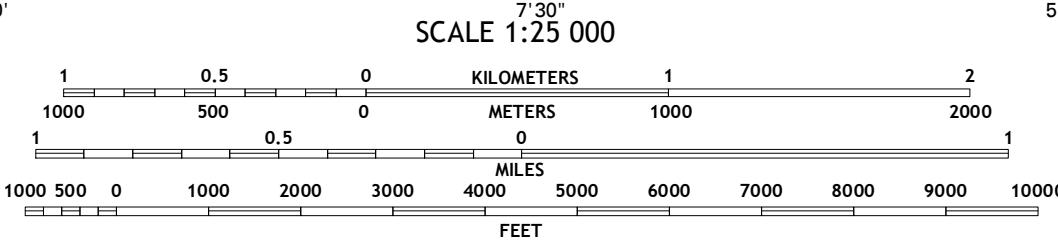
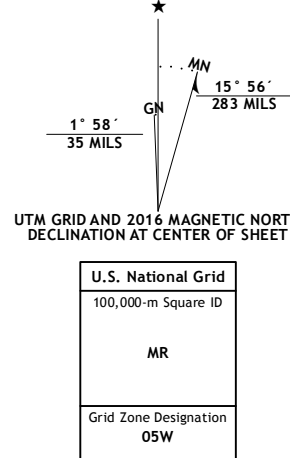
SURVEY PASS D-5 NE QUADRANGLE
ALASKA
7.5-MINUTE SERIES



Produced by the United States Geological Survey
North American Datum of 1983 (NAD83)
World Geodetic System of 1984 (WGS84), Projection and
1 000-meter grid: Universal Transverse Mercator, Zone 09W
10 000-foot ticks: Alaska Coordinate System of 1983 (zone 4)

This map is not a legal document. Boundaries may be
generalized for this map scale. Private lands within government
reservations may not be shown. Obtain permission before
entering private lands.

Imagery.....SPOTC, 2009 - 2015
Roads.....Alaska Dept. of Transportation, 2014
Names.....GNIS, 2016
Hydrography.....National Hydrography Dataset, 2013
Contours.....National Elevation Dataset, 2015
Boundaries.....Multiple sources; see metadata file, 1950 - 2016
Public Land Survey System.....BLM, 2006 - 2008
Wetlands.....FWS National Wetlands Inventory 1977 - 2014



CONTOUR INTERVAL 40 FEET
NORTH AMERICAN DATUM OF 1988

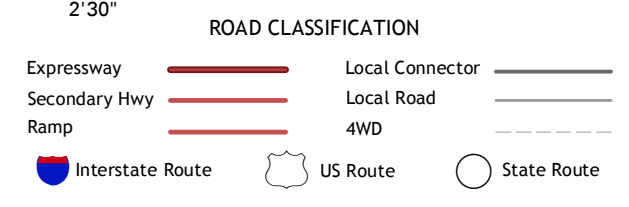
This map was produced to conform with the
National Geospatial Program US Topo Product Standard, 2011.
A metadata file associated with this product is draft version 0.6.18



QUADRANGLE LOCATION

| | | | |
|------------------------|---|---|--|
| 1 | 2 | 3 | 1 Kilik River (A-5) SE and (A-4) SW |
| 4 | 5 | 6 | 2 Kilik River (A-4) SE and (A-3) SW |
| 6 | 7 | 8 | 3 Kilik River (A-4) SE and (A-3) SW |
| 4 Survey Pass (D-5) NW | | | |
| 5 Survey Pass (D-4) NW | | | |
| 6 Survey Pass (D-5) SW | | | |
| 7 Survey Pass (D-5) SE | | | |
| 8 Survey Pass (D-4) SW | | | |

ADJOINING QUADRANGLES



SURVEY PASS D-5 NE, AK
2016

