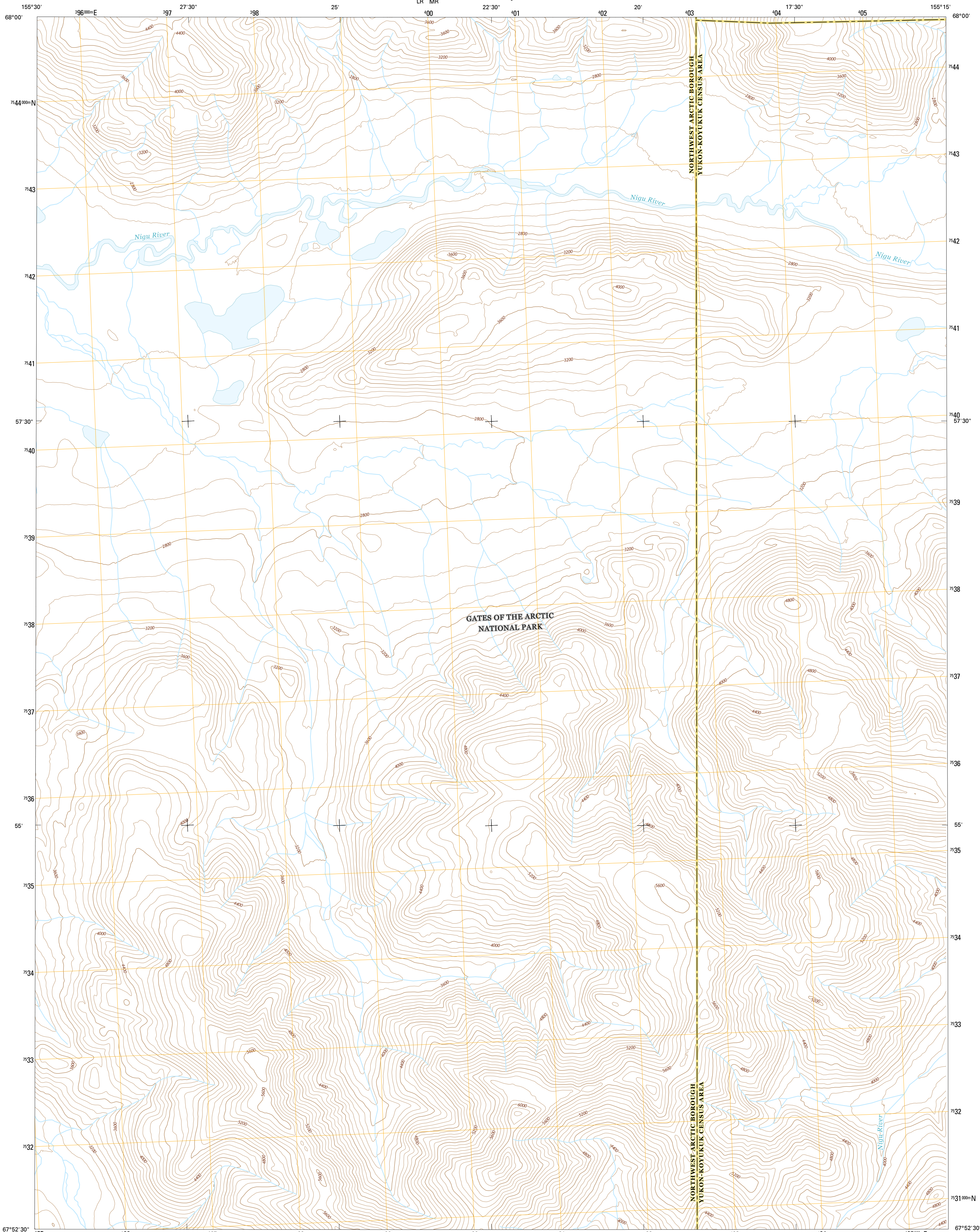




U.S. DEPARTMENT OF THE INTERIOR
U.S. GEOLOGICAL SURVEY



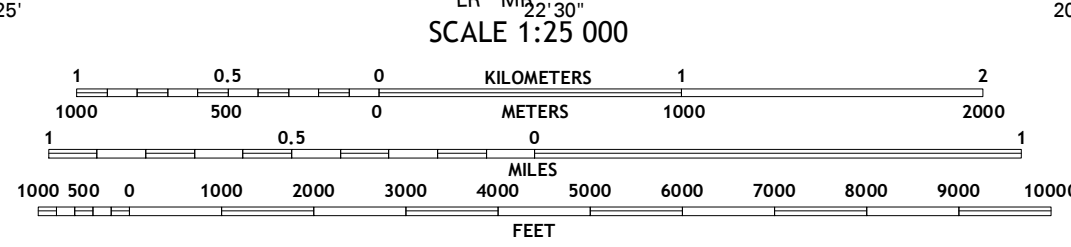
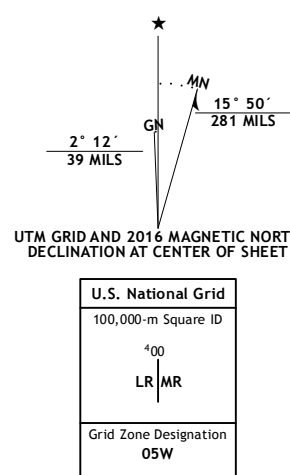
SURVEY PASS D-5 NW QUADRANGLE
ALASKA
7.5-MINUTE SERIES



Produced by the United States Geological Survey
North American Datum of 1983 (NAD83)
World Geodetic System of 1984 (WGS84), Projection and
1 000-meter grid: Universal Transverse Mercator, Zone 09W
10 000-foot ticks: Alaska Coordinate System of 1983 (zones 6
and 4)

This map is not a legal document. Boundaries may be
generalized for this map scale. Private lands within government
reservations may not be shown. Obtain permission before
entering private lands.

Imagery.....SPOT, 2009 - 2015
Roads.....Alaska Dept. of Transportation, 2014
Names.....GNS, 2016
Hydrography.....National Hydrography Dataset, 2010
Contours.....National Elevation Dataset, 2015
Boundaries.....Multiple sources; see metadata file, 1950 - 2016
Public Land Survey System.....BLM, 2006 - 2008
Wetlands.....FWS National Wetlands Inventory 1977 - 2014



CONTOUR INTERVAL 80 FEET
NORTH AMERICAN VERTICAL DATUM OF 1988

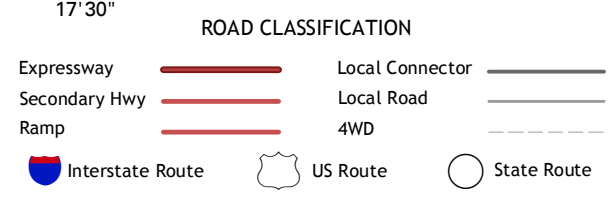
This map was produced to conform with the
National Geospatial Program US Topo Product Standard, 2011.
A metadata file associated with this product is draft version 0.6.18



QUADRANGLE LOCATION

1	2	3
4	5	6
7	8	

ADJOINING QUADRANGLES: 1 Kilik River (A-5) SW and (A-5) SE, 2 Kilik River (A-5) SE and (A-4) SW-4) SE and (A-4) SW, 3 Kilik River (A-4) SE and (A-4) SW, 4 Survey Pass (D-6) NE, 5 Survey Pass (D-5) NE, 6 Survey Pass (D-4) SE, 7 Survey Pass (D-5) SW, 8 Survey Pass (D-5) SE



SURVEY PASS D-5 NW, AK
2016

