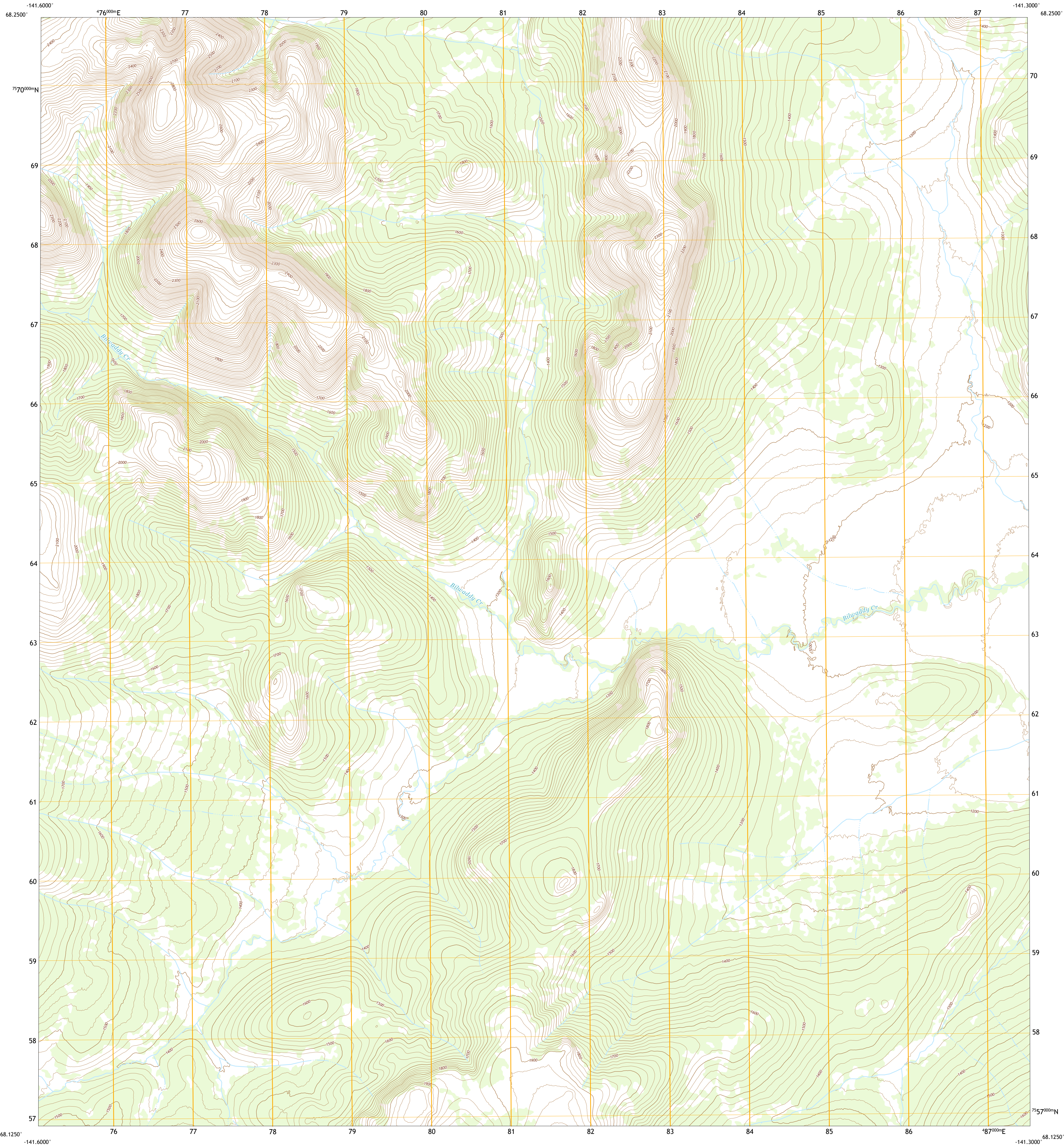




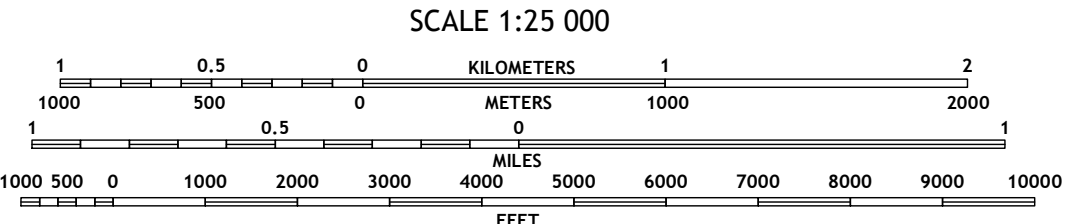
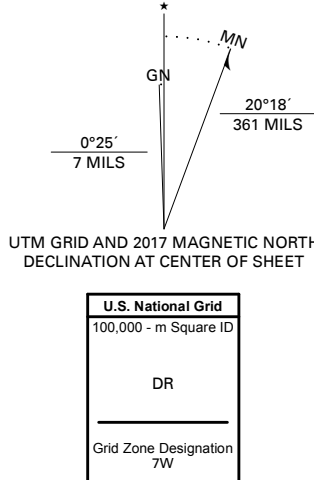
U.S. DEPARTMENT OF THE INTERIOR  
U.S. GEOLOGICAL SURVEY



TABLE MOUNTAIN A-1 NW QUADRANGLE  
ALASKA - YUKON-KOYUKUK CENSUS AREA  
7.5-MINUTE SERIES



Produced by the United States Geological Survey  
North American Datum of 1983 (NAD83)  
World Geodetic System of 1984 (WGS84). Projection and  
1 000-meter grid/Universal Transverse Mercator, Zone 7W  
This map is not a legal document. Boundaries may be  
generalized for this map scale. Private lands within government  
reservations may not be shown. Obtain permission before  
entering private lands.  
Imagery.....SPOT, © June 2010  
Roads.....Alaska Dept. of Transportation, Not Available  
Names.....GNIS, Not Available  
Hydrography.....National Hydrography Dataset, 2001 - 2015  
Contours.....National Elevation Dataset, 2018  
Boundaries.....Multiple sources; see metadata file 2015  
Public Land Survey System.....BLM, 2008  
Wetlands.....FWS National Wetlands Inventory Not Available



CONTOUR INTERVAL 20 FEET  
NORTH AMERICAN VERTICAL DATUM OF 1988  
This map was produced to conform with the  
National Geospatial Program US Topo Product Standard, 2011.  
A metadata file associated with this product is draft version 0.6.17



1	2	3
4	5	6
7	8	9

ADJOINING QUADRANGLES

ROAD CLASSIFICATION		
Expressway	Local Connector	
Secondary Hwy	Local Road	
Ramp	4WD	
Interstate Route	US Route	State Route

TABLE MOUNTAIN A-1 NW, AK  
2018

