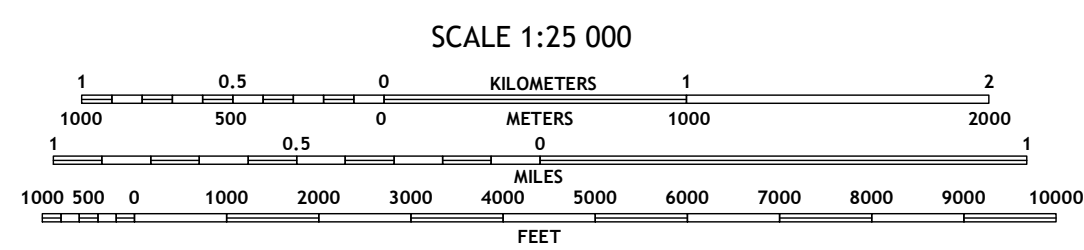
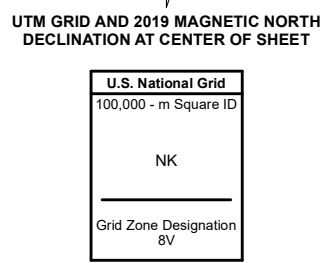
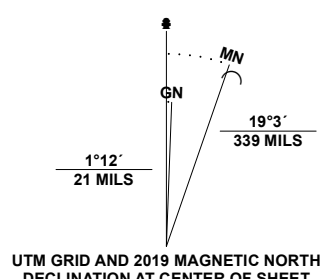


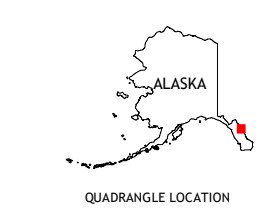
Produced by the United States Geological Survey  
North American Datum of 1983 (NAD83)  
World Geodetic System of 1984 (WGS84). Projection and  
1 000-meter grid: Universal Transverse Mercator, Zone 8V

This map is not a legal document. Boundaries may be  
generalized for this map scale. Private lands within government  
reservations may not be shown. Obtain permission before  
entering private lands.

Imagery.....SPOT, © July 2011 - August 2019  
Roads.....Alaska Dept. of Transportation, Not Available  
Roads within US Forest Service Lands.....FSTopo Data  
with limited Forest Service updates, Not Available  
Names.....GNIS, 2008 - 2020  
Hydrography.....National Hydrography Dataset, 2002 - 2016  
Contours.....National Elevation Dataset, 2016  
Boundaries.....Multiple sources: see metadata file 2017 - 2024  
Public Land Survey System.....BLM, 2008  
Wetlands.....FWS National Wetlands Inventory 1979



CONTOUR INTERVAL 80 FEET  
NORTH AMERICAN VERTICAL DATUM OF 1988  
This map was produced to conform with the  
National Geospatial Program US Topo Product Standard.



1	2	3
4	5	6
7	8	

ADJOINING QUADRANGLES

- 1 Taku River B-6 NE
- 2 Taku River B-5 NW
- 3 Taku River B-5 NE
- 4 Taku River B-4 SE
- 5 Taku River B-5 SE
- 6 Taku River A-6 NE
- 7 Taku River A-5 NW
- 8 Taku River A-5 NE

**ROAD CLASSIFICATION**

Expressway	Local Connector
Secondary Hwy	Local Road
Ramp	4WD
Interstate Route	US Route
FS Primary Route	FS Passenger Route
	FS High Clearance Route
	State Route

Check with local Forest Service unit  
for current travel conditions and restrictions.

**TAKU RIVER B-5 SW, AK**  
2021

