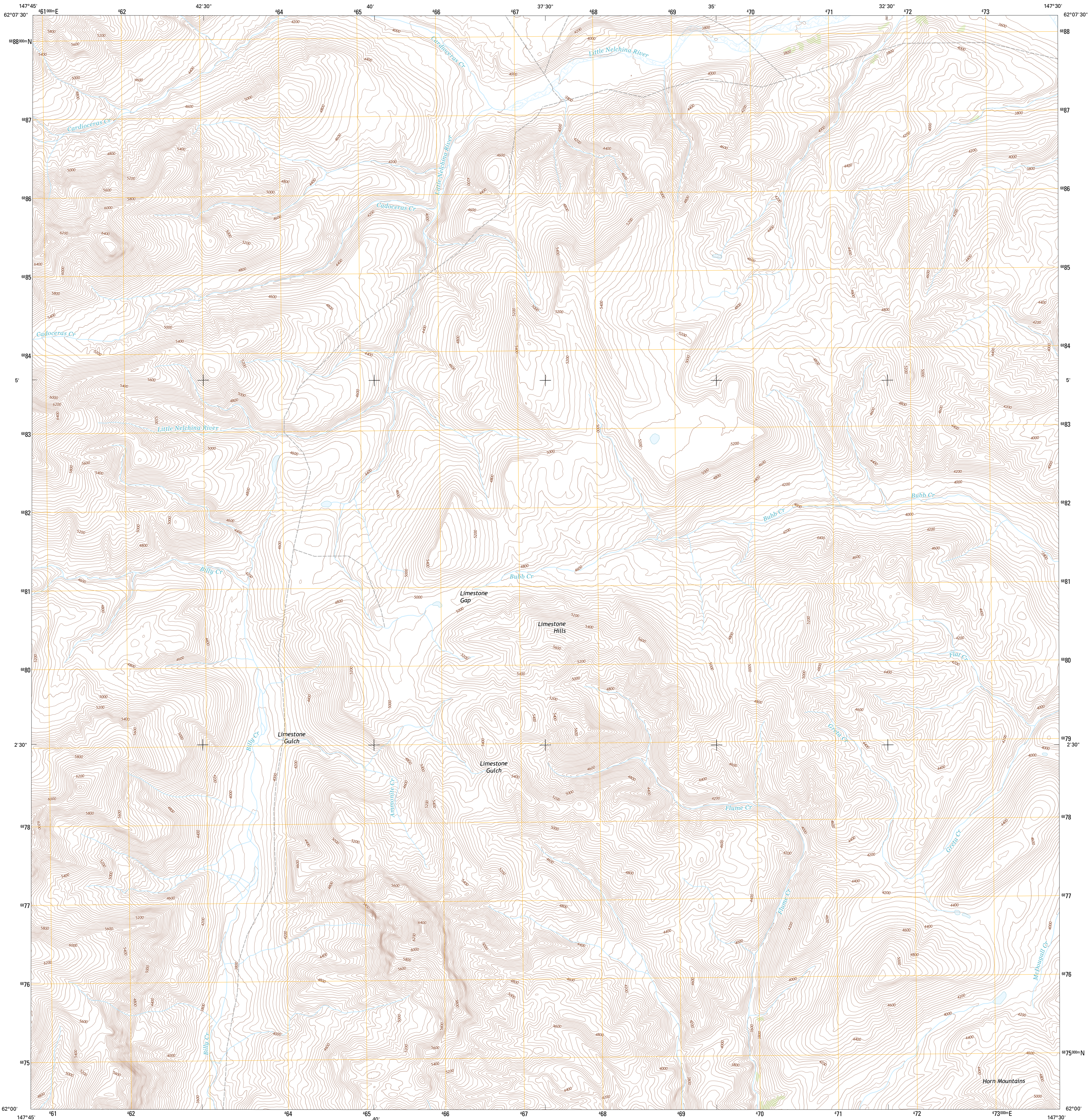




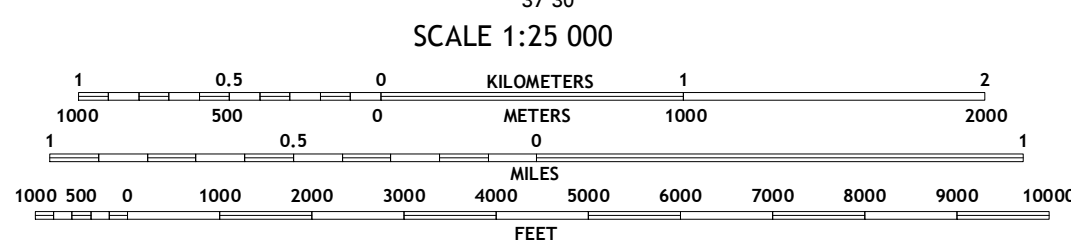
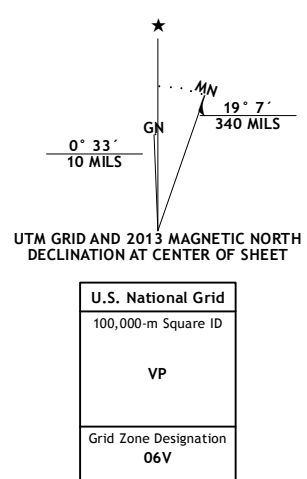
U.S. DEPARTMENT OF THE INTERIOR  
U. S. GEOLOGICAL SURVEY



TALKEETNA MOUNTAINS A-2 SE QUADRANGLE  
ALASKA  
7.5-MINUTE SERIES



Produced by the United States Geological Survey  
North American Datum of 1983 (NAD83)  
World Geodetic System of 1984 (WGS84). Projection and  
1 000-meter grid: Universal Transverse Mercator, Zone 06V



Imagery.....SPOT, ©2010  
Roads.....©2006-2013 TomTom  
Names.....GNIS, 2013  
Hydrography.....National Hydrography Dataset, 2010  
Contours.....National Elevation Dataset, 2012  
Boundaries.....Census, IBWC, IBC, USGS, 1972 - 2012  
Public Land Survey System.....BLM, 2006 - 2008

CONTOUR INTERVAL: 40 FEET  
NORTH AMERICAN VERTICAL DATUM OF 1988

This map was produced to conform with the  
National Geospatial Program US Topo Product Standard, 2011.  
A metadata file associated with this product is draft version 0.6.10

ROAD CLASSIFICATION

- Expressway
- Secondary Hwy
- Ramp
- Local Connector
- Local Road
- 4WD
- US Route
- State Route

QUADRANGLE LOCATION

1	2	3
4	5	6
7	8	

ADJACENT QUADRANGLES

- Talkeetna Mountains (A-2) NW
- Talkeetna Mountains (A-2) NE
- Talkeetna Mountains (A-1) NW
- Talkeetna Mountains (A-2) SW
- Talkeetna Mountains (A-1) SW
- Anchorage (D-3) NW and (D-3) NE
- Anchorage (D-2) NE and (D-2) NW
- Anchorage (D-2) NE and (D-1) NW

**TALKEETNA MOUNTAINS A-2 SE, AK**  
2013

