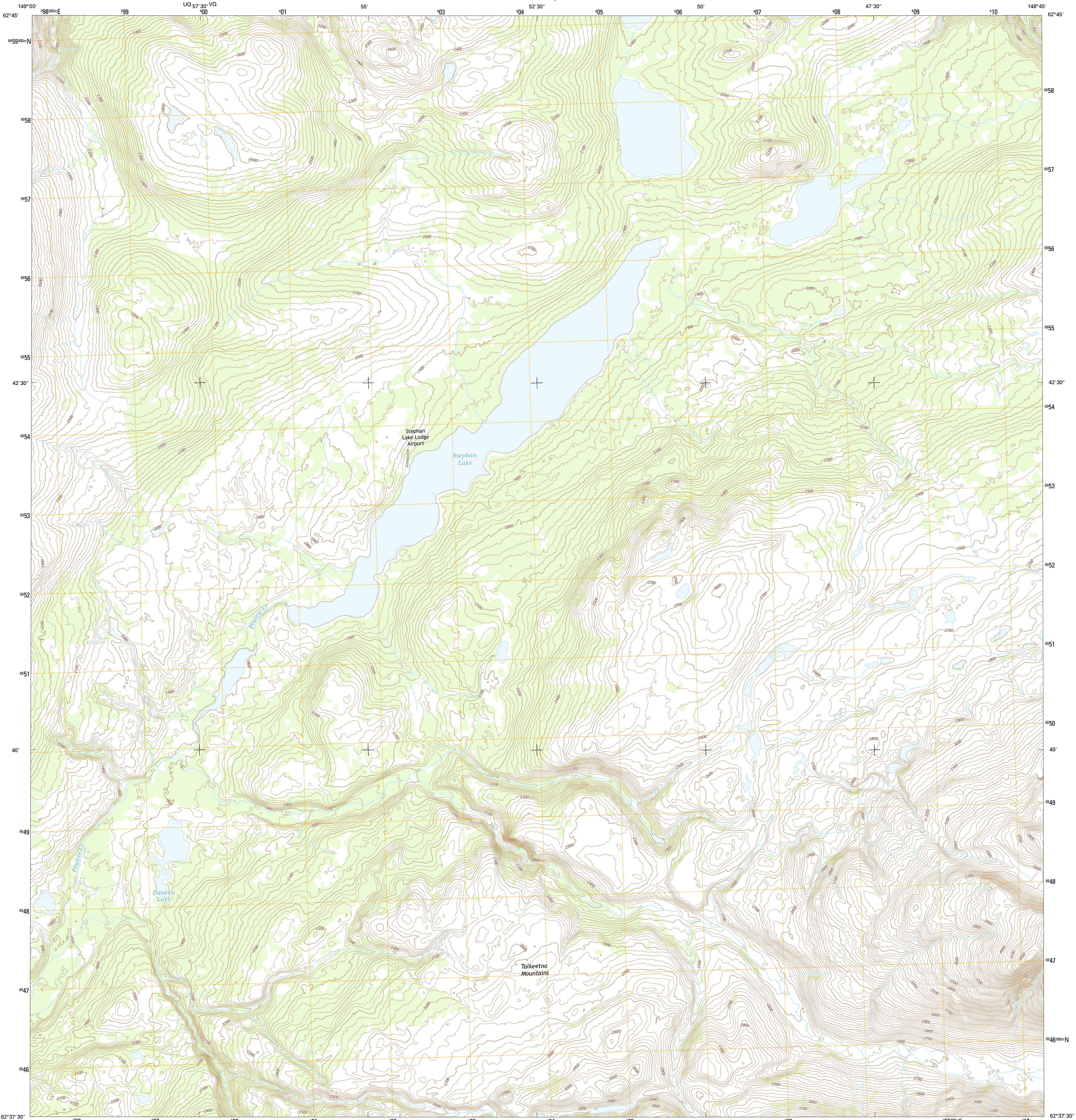




U.S. DEPARTMENT OF THE INTERIOR
U.S. GEOLOGICAL SURVEY



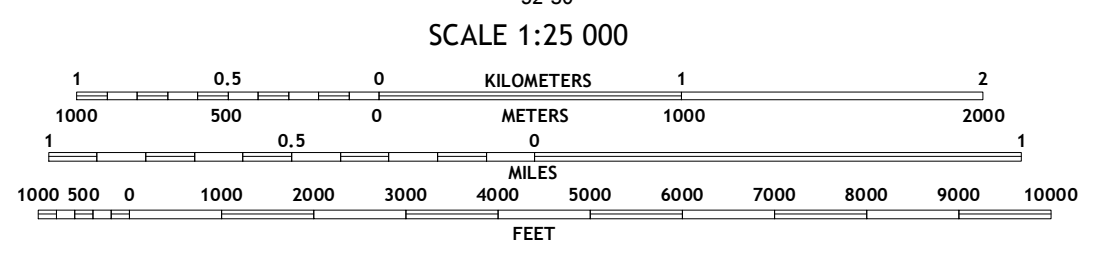
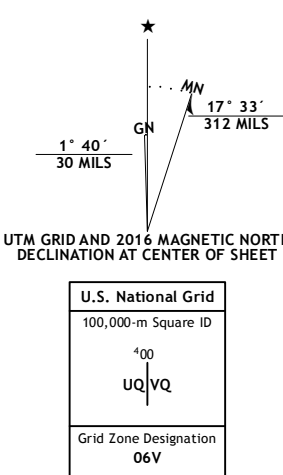
TALKEETNA MOUNTAINS C-4 NW QUADRANGLE
ALASKA-MATANUSKA-SUSITNA BOROUGH
7.5-MINUTE SERIES



Produced by the United States Geological Survey
North American Datum of 1983 (NAD83)
World Geodetic System of 1984 (WGS84), Projection and
1000-meter grid; Universal Transverse Mercator, Zone 06V
10 000-foot ticks; Alaska Coordinate System of 1983 (zone 4)

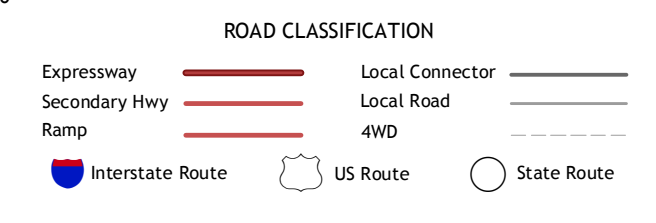
This map is not a legal document. Boundaries may be
generalized for this map scale. Private lands within government
reservations may not be shown. Obtain permission before
entering private lands.

Imagery.....SPOTD, 2009 - 2015
Roads.....Alaska Dept. of Transportation, 2014
Names.....GNIS, 2016
Hydrography.....National Hydrography Dataset, 2010
Contours.....National Elevation Dataset, 2012
Boundaries.....Multiple sources; see metadata file, 1950-2016
Public Land Survey System.....BLM, 2006 - 2008
Wetlands.....FWS National Wetlands Inventory 1977 - 2014



SCALE 1:25 000
CONTOUR INTERVAL 20 FEET
NORTH AMERICAN DATUM OF 1988

This map was produced to conform with the
National Geospatial Program US Topo Product Standard, 2011.
A metadata file associated with this product is draft version 0.6.18



1	2	3	1 Talkeetna Mountains (D-5) SE
2	3	4	2 Talkeetna Mountains (D-4) SW
3	4	5	3 Talkeetna Mountains (D-4) SE
4	5	6	4 Talkeetna Mountains (C-5) NE
5	6	7	5 Talkeetna Mountains (C-4) NE
6	7	8	6 Talkeetna Mountains (C-5) SE
7	8		7 Talkeetna Mountains (C-4) SE
8			8 Talkeetna Mountains (C-4) SW

TALKEETNA MOUNTAINS C-4 NW, AK
2016

