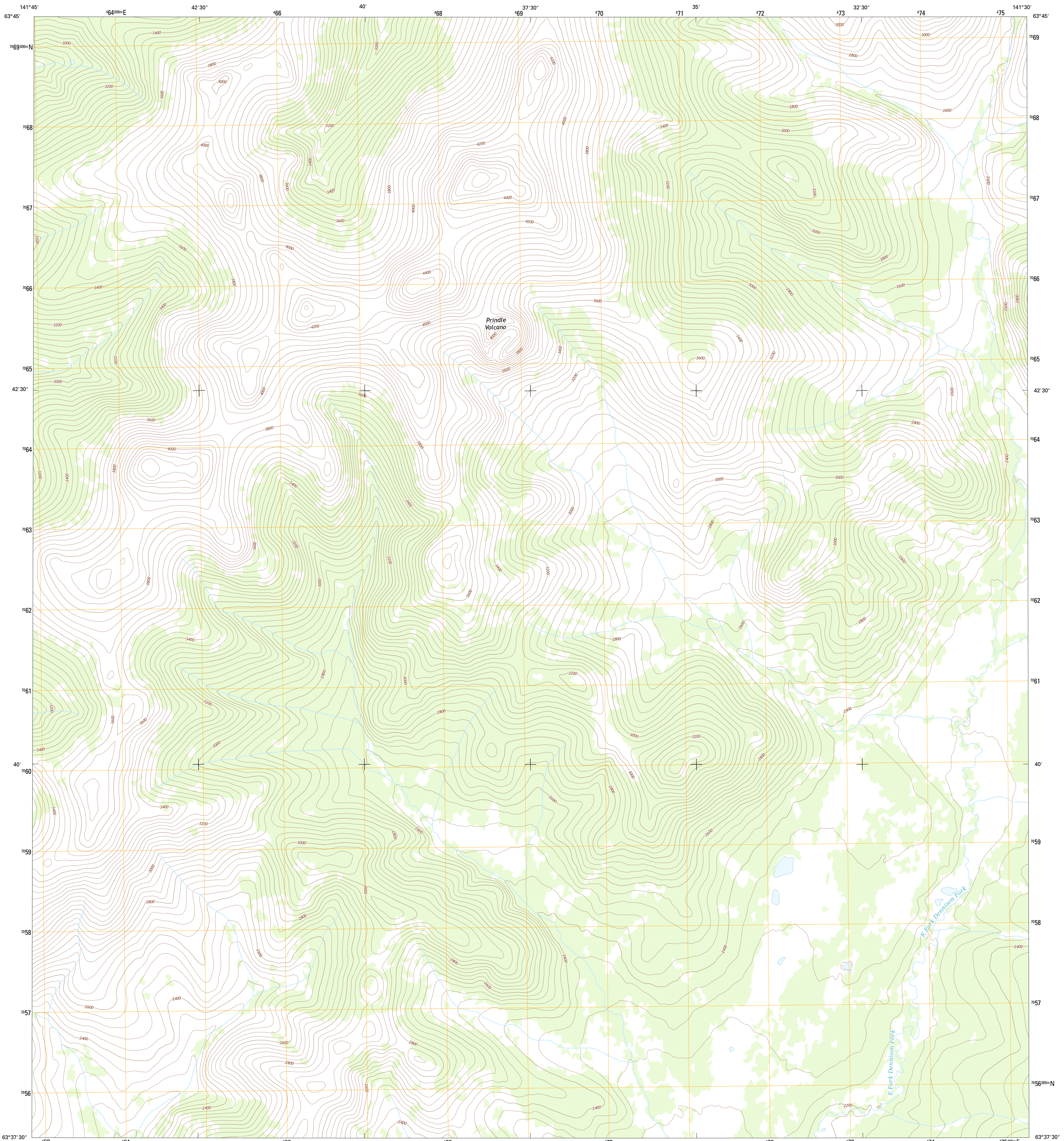




U.S. DEPARTMENT OF THE INTERIOR  
U. S. GEOLOGICAL SURVEY

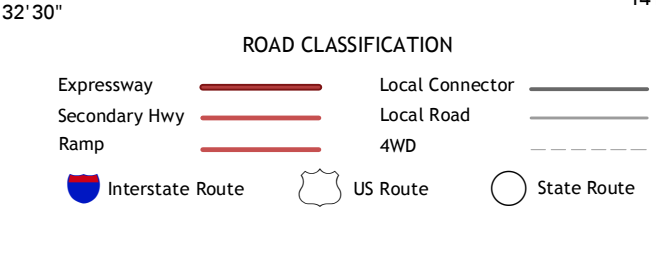
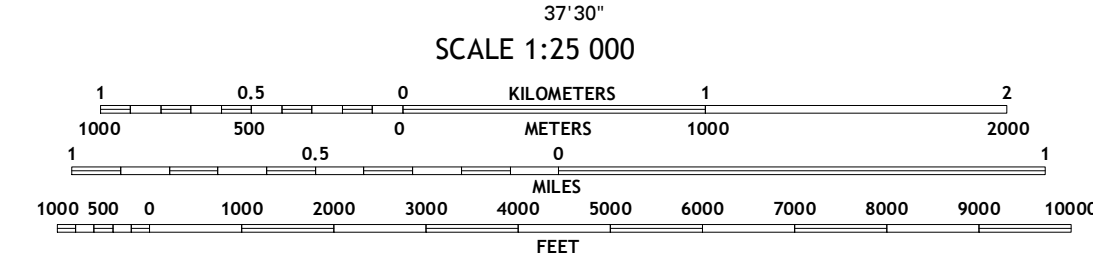
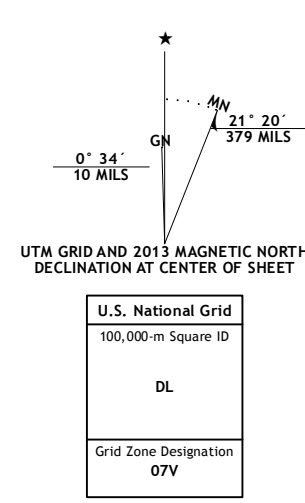


TANACROSS C-2 NE QUADRANGLE  
ALASKA  
7.5-MINUTE SERIES



Produced by the United States Geological Survey  
North American Datum of 1983 (NAD83)  
World Geodetic System of 1984 (WGS84). Projection and  
1 000-meter grid: Universal Transverse Mercator, Zone 07V

Imagery.....SPOT, ©2009 - 2011  
Roads.....©2006-2013 TomTom  
Names.....GNIS, 2013  
Hydrography.....National Hydrography Dataset, 2009  
Contours.....National Elevation Dataset, 2012  
Boundaries.....Census, IBWC, IBC, USGS, 1972 - 2012  
Public Land Survey System.....BLM, 2006 - 2008



CONTOUR INTERVAL 40 FEET  
NORTH AMERICAN VERTICAL DATUM OF 1988  
This map was produced to conform with the  
National Geospatial Program US Topo Product Standard, 2011.  
A metadata file associated with this product is draft version 0.6.10

1	2	3
4	5	6
7	8	

ADJOINING QUADRANGLES

- 1 Tanacross (D-2) SW
- 2 Tanacross (D-2) SE
- 3 Tanacross (D-1) SW
- 4 Tanacross (C-2) NW
- 5 Tanacross (C-1) NW
- 6 Tanacross (C-2) SW
- 7 Tanacross (C-2) SE
- 8 Tanacross (C-1) SW

TANACROSS C-2 NE, AK  
2013

