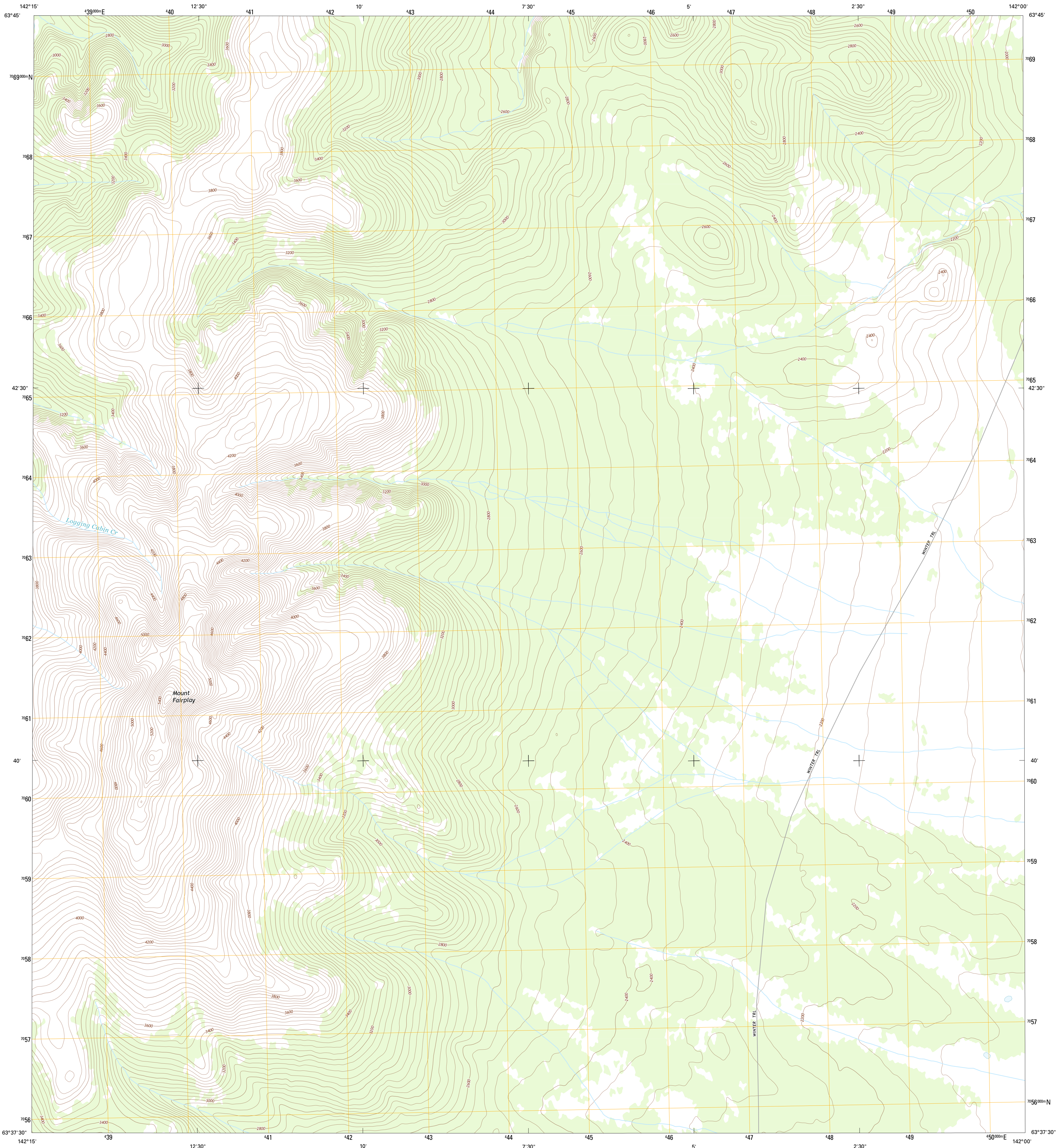




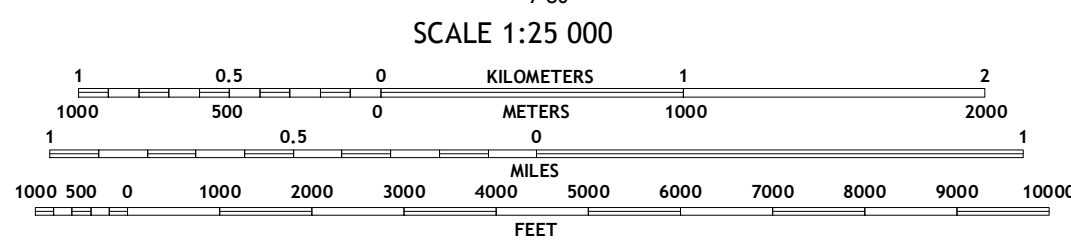
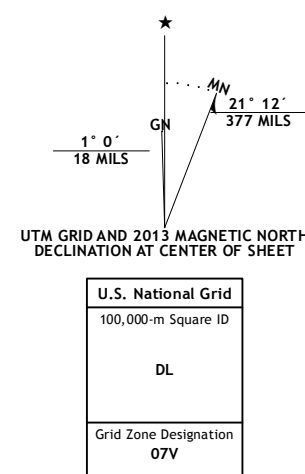
U.S. DEPARTMENT OF THE INTERIOR
U. S. GEOLOGICAL SURVEY



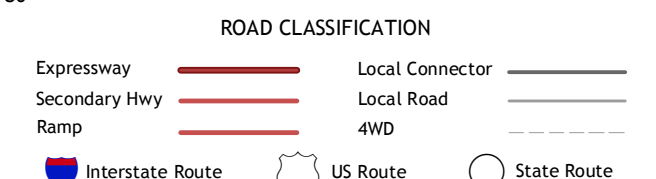
TANACROSS C-3 NE QUADRANGLE
ALASKA
7.5-MINUTE SERIES



Produced by the United States Geological Survey
North American Datum of 1983 (NAD83)
World Geodetic System of 1984 (WGS84). Projection and
1 000-meter grid: Universal Transverse Mercator, Zone 07V



QUADRANGLE LOCATION



Imagery.....SPOT, ©2009 - 2011
Roads.....©2006-2013 TomTom
Names.....GNIS, 2013
Hydrography.....National Hydrography Dataset, 2009
Contours.....National Elevation Dataset, 2012
Boundaries.....Census, IBWC, IBC, USGS, 1972 - 2012
Public Land Survey System.....BLM, 2006 - 2008

CONTOUR INTERVAL: 40 FEET
NORTH AMERICAN VERTICAL DATUM OF 1988
This map was produced to conform with the
National Geospatial Program US Topo Product Standard, 2011.
A metadata file associated with this product is draft version 0.6.10

1	2	3
4	5	6
7	8	

ADJOINING QUADRANGLES

- 1 Tanacross (D-3) SW
- 2 Tanacross (D-3) SE
- 3 Tanacross (D-2) SW
- 4 Tanacross (C-3) NW
- 5 Tanacross (C-2) NW
- 6 Tanacross (C-3) SW
- 7 Tanacross (C-3) SE
- 8 Tanacross (C-2) SW

TANACROSS C-3 NE, AK
2013



USGS
NCA REF. NO. U.S.G.S. X 2 K 3 S 1 6