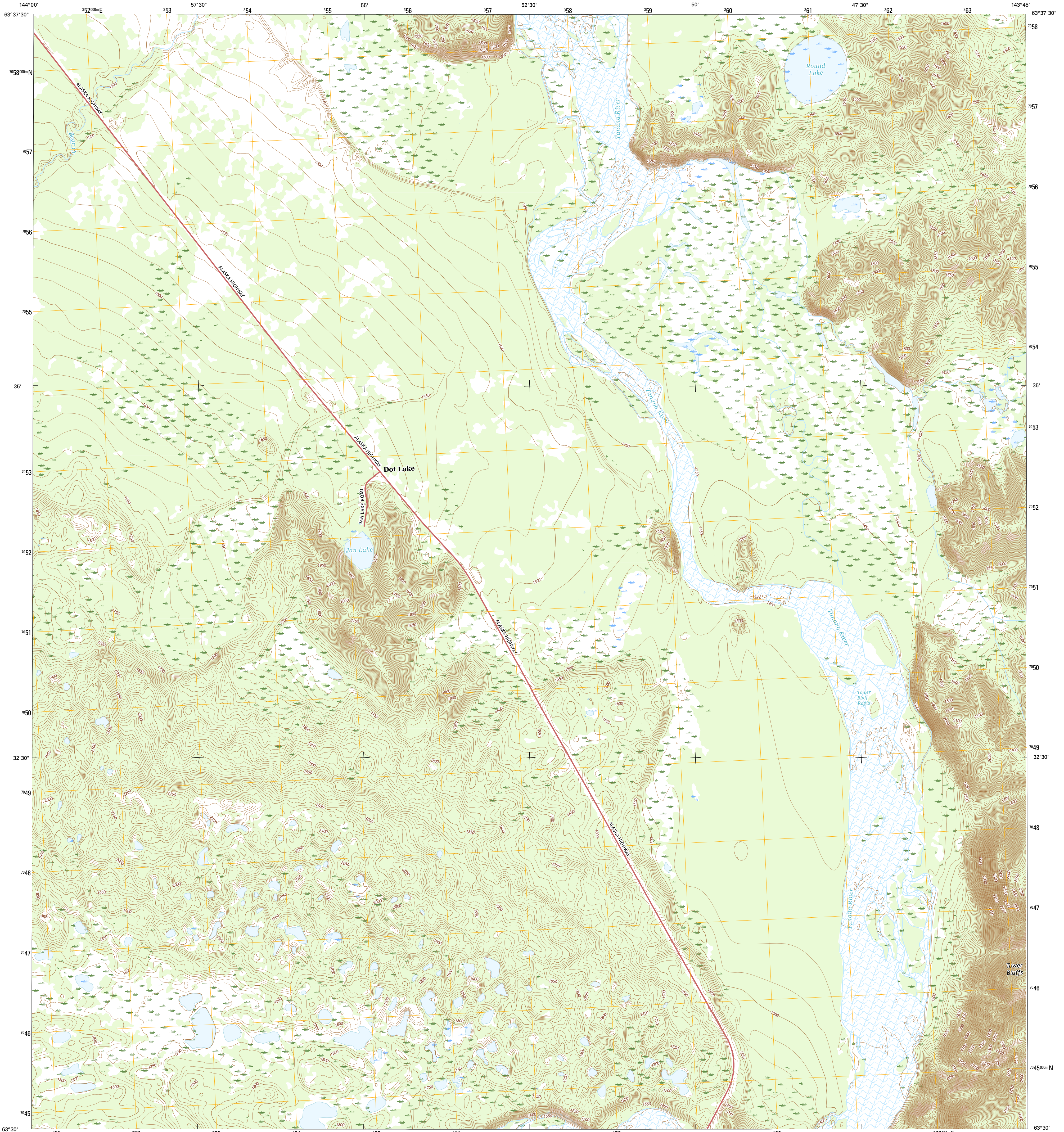




U.S. DEPARTMENT OF THE INTERIOR  
U.S. GEOLOGICAL SURVEY



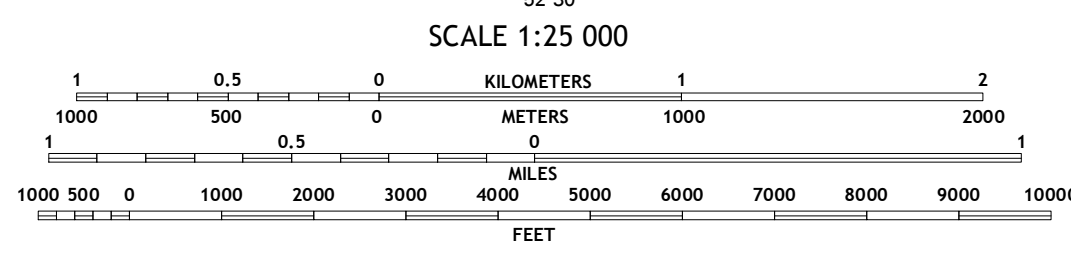
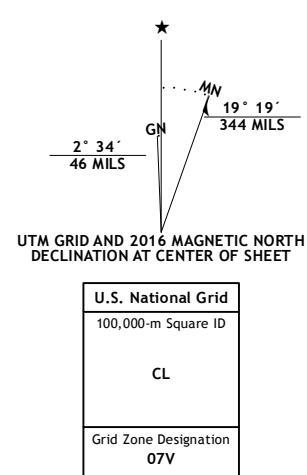
TANACROSS C-6 SW QUADRANGLE  
ALASKA  
7.5-MINUTE SERIES



Produced by the United States Geological Survey  
North American Datum of 1983 (NAD83)  
World Geodetic System of 1984 (WGS84). Projection and  
1 000-meter grid: Universal Transverse Mercator, Zone 07Y  
10 000-foot ticks: Alaska Coordinate System of 1983 (zone 2)

This map is not a legal document. Boundaries may be  
generalized for this map scale. Private lands within government  
reservations may not be shown. Obtain permission before  
entering private lands.

Imagery.....SPOTD, 2009 - 2015  
Roads.....Alaska Dept. of Transportation, 2014  
Names.....GNIS, 2016  
Hydrography.....National Hydrography Dataset, 2009  
Contours.....National Elevation Dataset, 2012  
Boundaries.....Multiple sources; see metadata file, 1950 - 2016  
Public Land Survey System.....BLM, 2006 - 2008  
Wetlands.....FWS National Wetlands Inventory 1977 - 2014



CONTOUR INTERVAL 10 FEET  
NORTH AMERICAN VERTICAL DATUM OF 1988  
This map was produced to conform with the  
National Geospatial Program US Topo Product Standard, 2011.  
A metadata file associated with this product is draft version 0.6.18



QUADRANGLE LOCATION

ROAD CLASSIFICATION	
	Expressway
	Secondary Hwy
	Ramp
	Interstate Route
	Local Connector
	Local Road
	4WD
	US Route
	State Route

1	2	3
4	5	6
7	8	

ADJOINING QUADRANGLES @ Tanacross (B-6) NE

TANACROSS C-6 SW, AK  
2016

