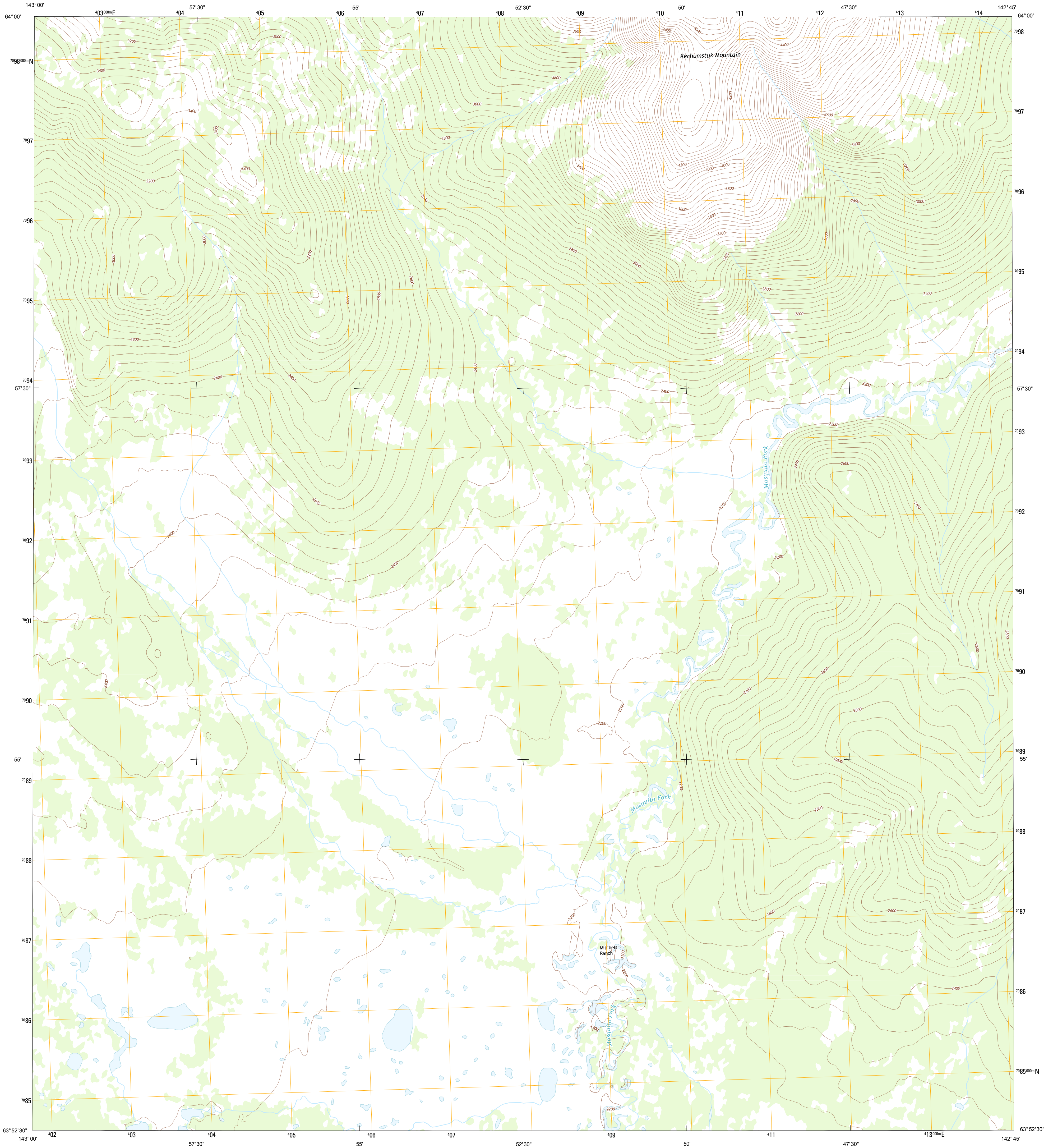




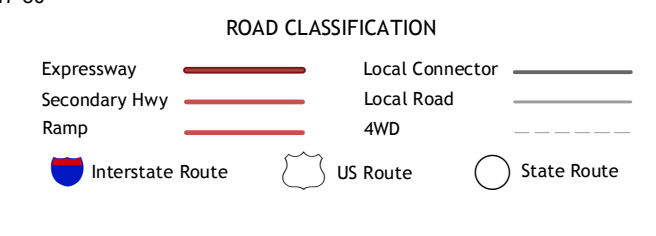
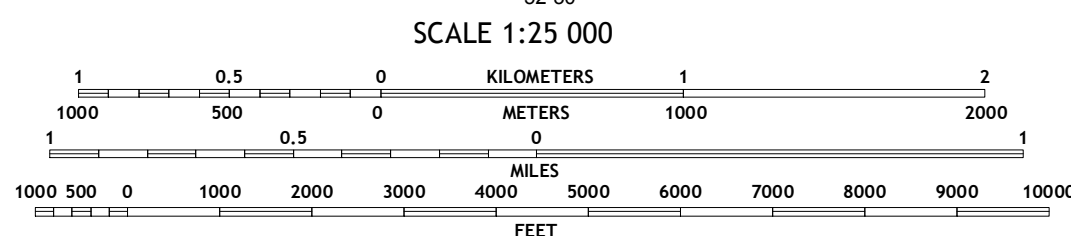
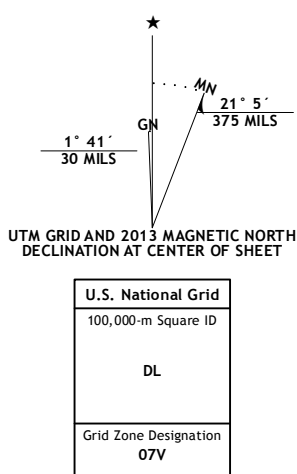
U.S. DEPARTMENT OF THE INTERIOR
U. S. GEOLOGICAL SURVEY



TANACROSS D-4 NW QUADRANGLE
ALASKA
7.5-MINUTE SERIES



Produced by the United States Geological Survey
North American Datum of 1983 (NAD83)
World Geodetic System of 1984 (WGS84). Projection and
1 000-meter grid: Universal Transverse Mercator, Zone 07V



Imagery.....SPOT, ©2009 - 2011
Roads.....©2006-2013 TomTom
Names.....GNIS, 2013
Hydrography.....National Hydrography Dataset, 2009
Contours.....National Elevation Dataset, 2012
Boundaries.....Census, IBWC, IBC, USGS, 1972 - 2012
Public Land Survey System.....BLM, 2006 - 2008

CONTOUR INTERVAL: 40 FEET
NORTH AMERICAN VERTICAL DATUM OF 1988
This map was produced to conform with the
National Geospatial Program US Topo Product Standard, 2011.
A metadata file associated with this product is draft version 0.6.10.

ADJOINING QUADRANGLES

1 Eagle (A-5) SE	2 Eagle (A-4) SW	3 Eagle (A-4) SE
4 Tanacross (D-5) NE	5 Tanacross (D-4) NE	6 Tanacross (D-5) SE
7 Tanacross (D-4) SW	8 Tanacross (D-4) SE	

TANACROSS D-4 NW, AK
2013

