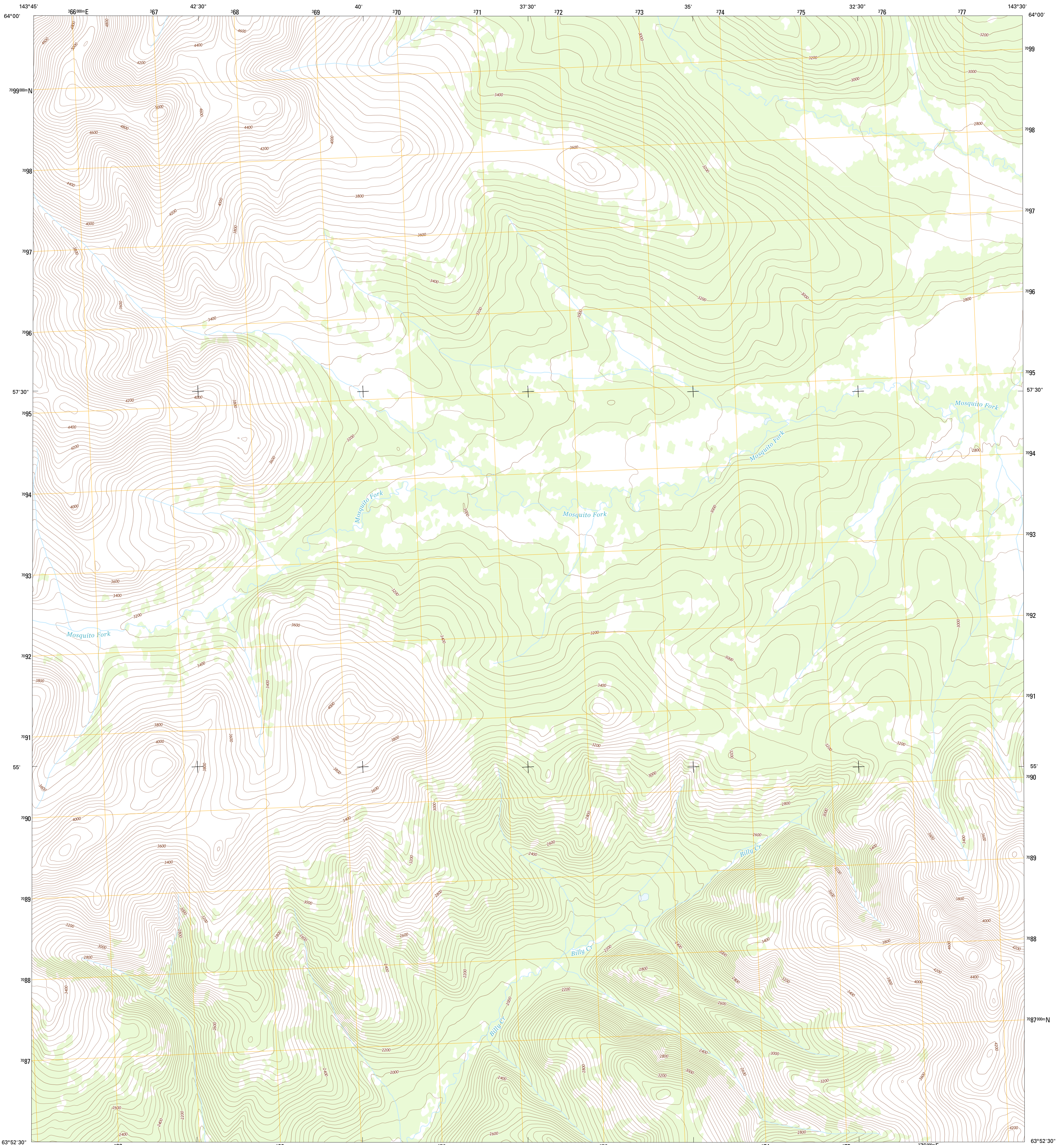




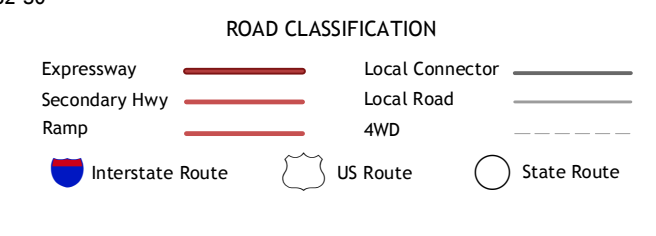
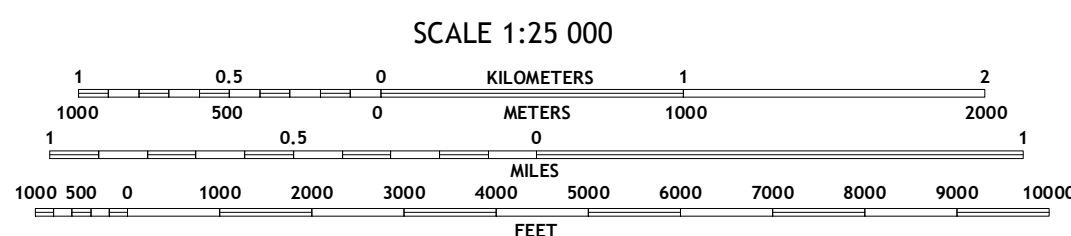
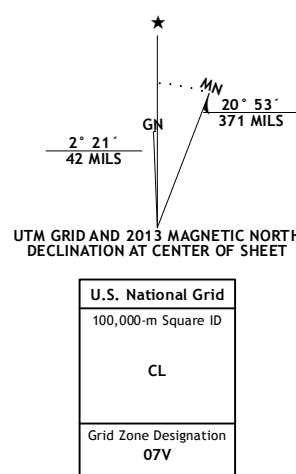
U.S. DEPARTMENT OF THE INTERIOR  
U. S. GEOLOGICAL SURVEY



TANACROSS D-6 NE QUADRANGLE  
ALASKA  
7.5-MINUTE SERIES



Produced by the United States Geological Survey  
North American Datum of 1983 (NAD83)  
World Geodetic System of 1984 (WGS84). Projection and  
1 000-meter grid: Universal Transverse Mercator, Zone 07V



Imagery..... SPOT, ©2009  
Roads..... ©2006-2013 TomTom  
Names..... ©2006-2013 TomTom  
Hydrography..... National Hydrography Dataset, 2009  
Contours..... National Elevation Dataset, 2012  
Boundaries..... Census, IBWC, IBC, USGS, 1972 - 2012  
Public Land Survey System..... BLM, 2006 - 2008

UTM GRID AND 2013 MAGNETIC NORTH  
DECLINATION AT CENTER OF SHEET

U.S. National Grid
100,000-m Square ID
CL
Grid Zone Designation
07V

CONTOUR INTERVAL 40 FEET  
NORTH AMERICAN VERTICAL DATUM OF 1988

This map was produced to conform with the  
National Geospatial Program US Topo Product Standard, 2011.  
A metadata file associated with this product is draft version 0.6.10

1	2	3
4	5	6
7	8	

ADJOINING QUADRANGLES

- 1 Eagle (A-6) SW
- 2 Eagle (A-6) SE
- 3 Eagle (A-5) SW
- 4 Tanacross (D-6) NW
- 5 Tanacross (D-5) NW
- 6 Tanacross (D-6) SW
- 7 Tanacross (D-6) SE
- 8 Tanacross (D-5) SW

TANACROSS D-6 NE, AK  
2013

