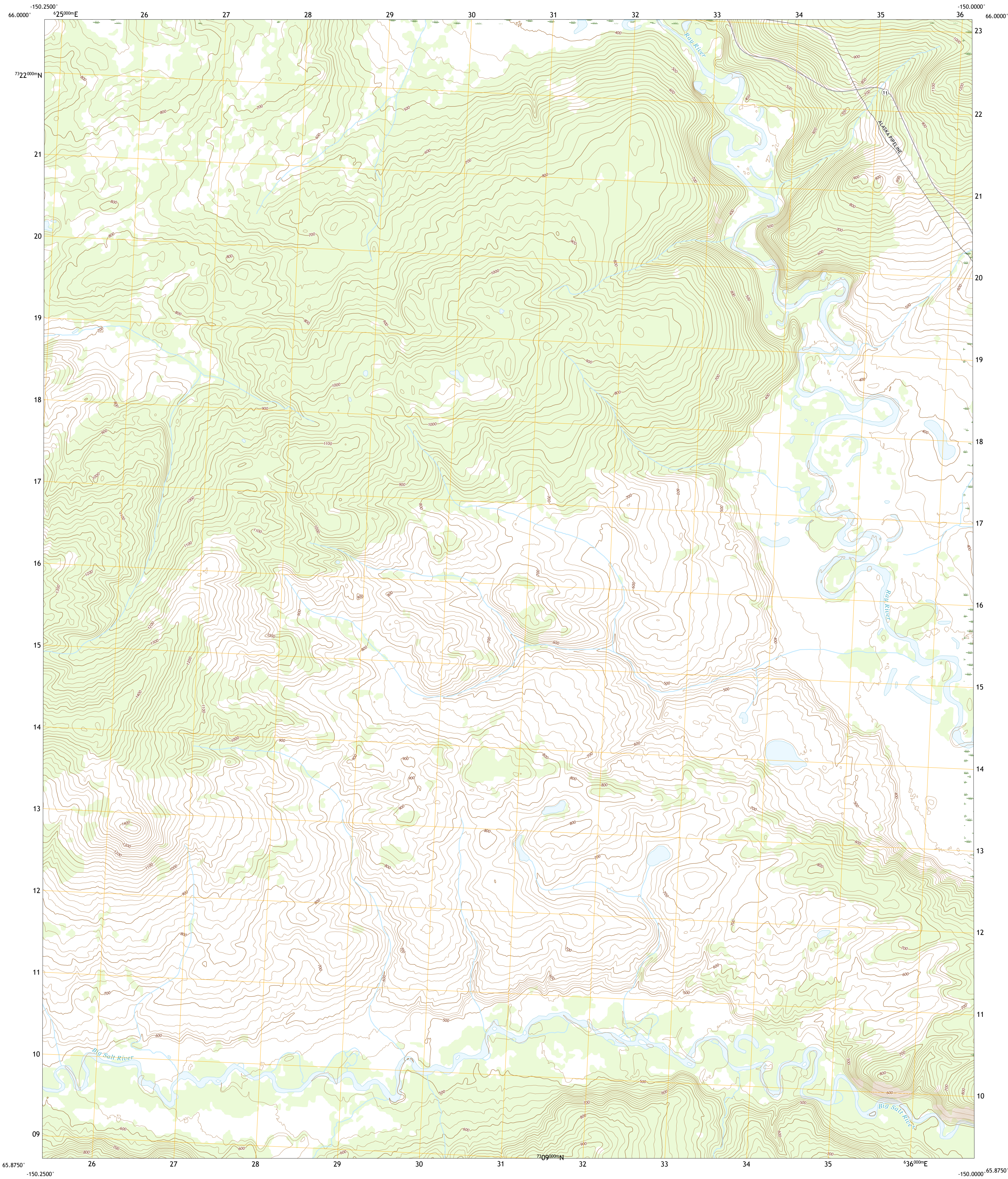




U.S. DEPARTMENT OF THE INTERIOR  
U.S. GEOLOGICAL SURVEY



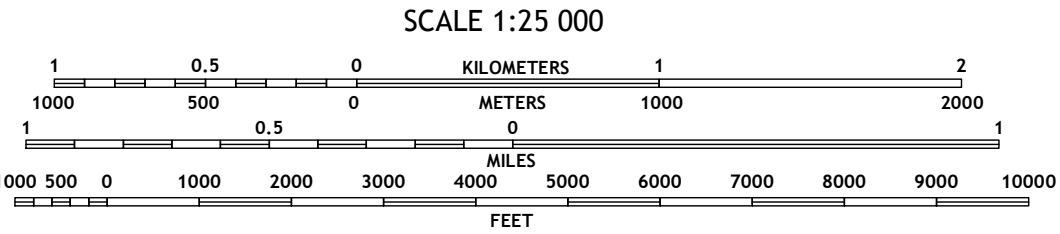
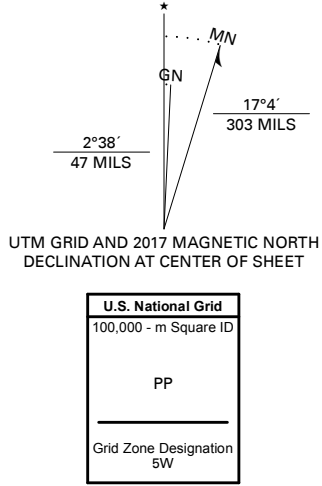
TANANA D-1 NE QUADRANGLE  
ALASKA - YUKON-KOYUKUK CENSUS AREA  
7.5-MINUTE SERIES



Produced by the United States Geological Survey

North American Datum of 1983 (NAD83)  
World Geodetic System of 1984 (WGS84) Projection and  
1 000-meter grid/Universal Transverse Mercator, Zone 50N  
This map is not a legal document. Boundaries may be  
generalized for this map scale. Private lands within government  
reservations may not be shown. Obtain permission before  
entering private lands.

Imagery.....SPOT, © June 2010  
Roads.....Alaska Dept. of Transportation, 2017  
Names.....GNS, Not Available  
Hydrography.....National Hydrography Dataset, 2011  
Contours.....National Elevation Dataset, 2016  
Boundaries.....Multiple sources, see metadata file, 2014  
Public Land Survey System.....BLM, 2008 - 2017  
Wetlands.....FWS National Wetlands Inventory 1972 - 1981



CONTOUR INTERVAL 20 FEET  
NORTH AMERICAN VERTICAL DATUM OF 1988  
This map was produced to conform with the  
National Geospatial Program US Topo Product Standard, 2011.  
A metadata file associated with this product is draft version 0.6.17



1	2	3
4	5	6
7	8	9

ADJOINING QUADRANGLES

ROAD CLASSIFICATION	
Expressway	Local Connector
Secondary Hwy	Local Road
Ramp	4WD
Interstate Route	US Route
	State Route

TANANA D-1 NE, AK  
2017

