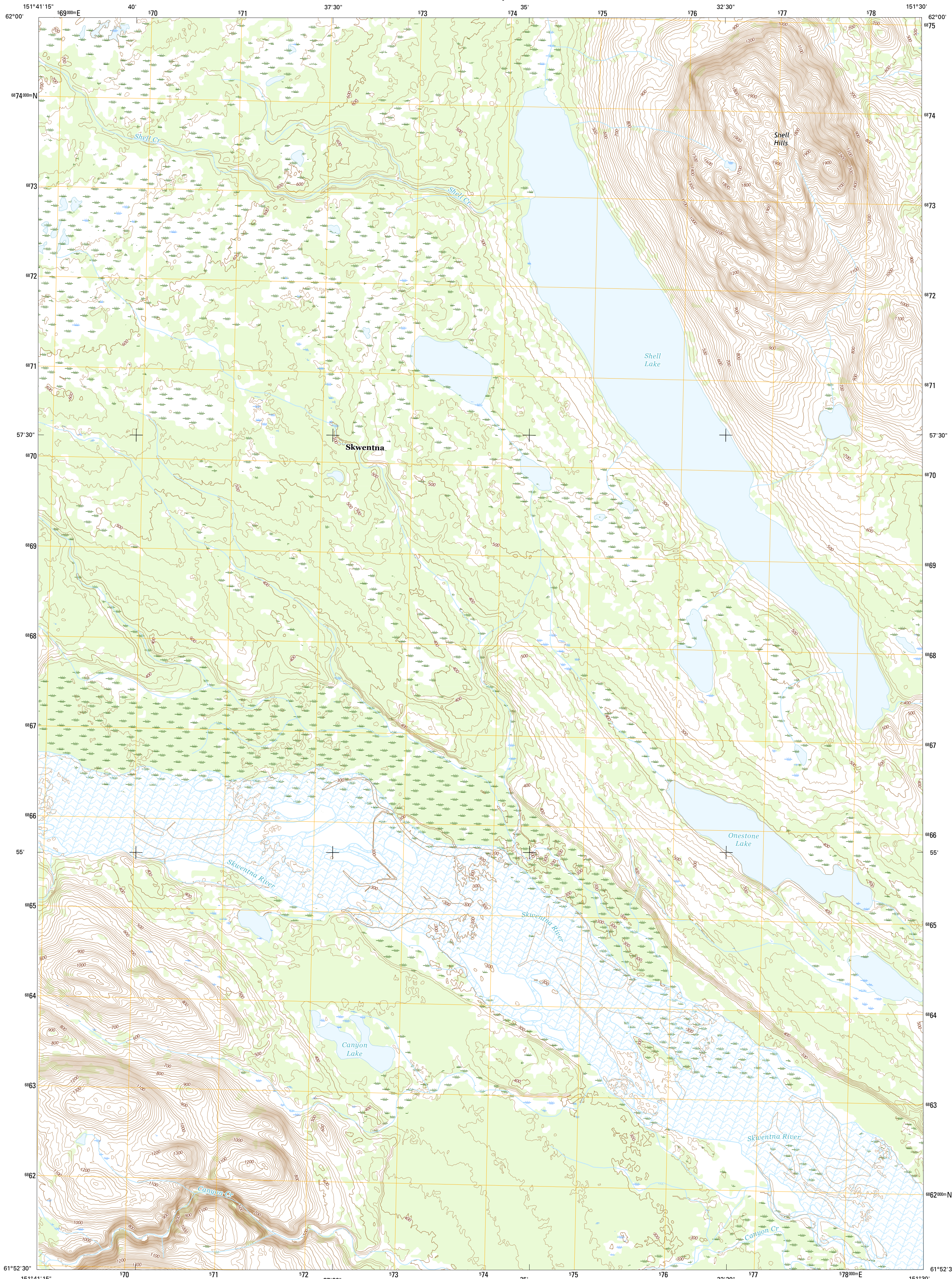




U.S. DEPARTMENT OF THE INTERIOR
U.S. GEOLOGICAL SURVEY



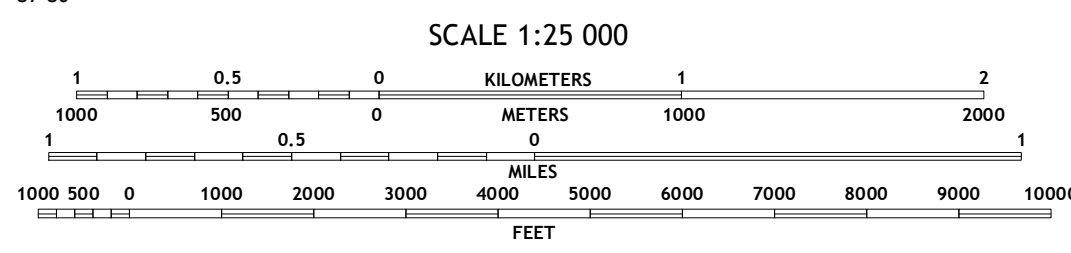
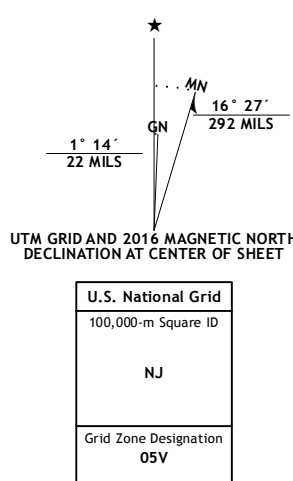
TYONEK D-5 NE QUADRANGLE
ALASKA-MATANUSKA-SUSITNA BOROUGH
7.5-MINUTE SERIES



Produced by the United States Geological Survey
North American Datum of 1983 (NAD83)
World Geodetic System of 1984 (WGS84) Projection and
1 000-meter grid: Universal Transverse Mercator, Zone 50V
10 000-foot ticks: Alaska Coordinate System of 1983 (zone 4)

This map is not a legal document. Boundaries may be
generalized for this map scale. Private lands within government
reservations may not be shown. Obtain permission before
entering private lands.

Imagery.....SPOT5, 2009 - 2015
Roads.....Alaska Dept. of Transportation, 2014
Names.....GNIS, 2016
Hydrography.....National Hydrography Dataset, 2010
Contours.....National Elevation Dataset, 2012
Boundaries.....Multiple sources; see metadata file, 1950 - 2016
Public Land Survey System.....BLM, 2006 - 2008
Wetlands.....FWS National Wetlands Inventory 1977 - 2014

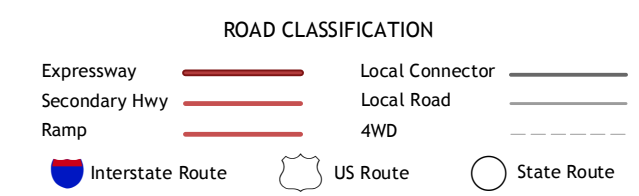


CONTOUR INTERVAL 20 FEET
NORTH AMERICAN DATUM OF 1988

This map was produced to conform with the
National Geospatial Program US Topo Product Standard, 2011.
A metadata file associated with this product is draft version 0.6.18



QUADRANGLE LOCATION



1	2	3
4	5	6
7	8	

ADJOINING QUADRANGLES: 1 Talkeetna (A-4) SE and (A-4) SW, 2 Talkeetna (A-4) SE, 3 Talkeetna (A-3) SW, 4 Tyonek (D-5) NW, 5 Tyonek (D-4) NW, 6 Tyonek (D-5) SW, 7 Tyonek (D-5) SE, 8 Tyonek (D-4) SW

TYONEK D-5 NE, AK
2016

