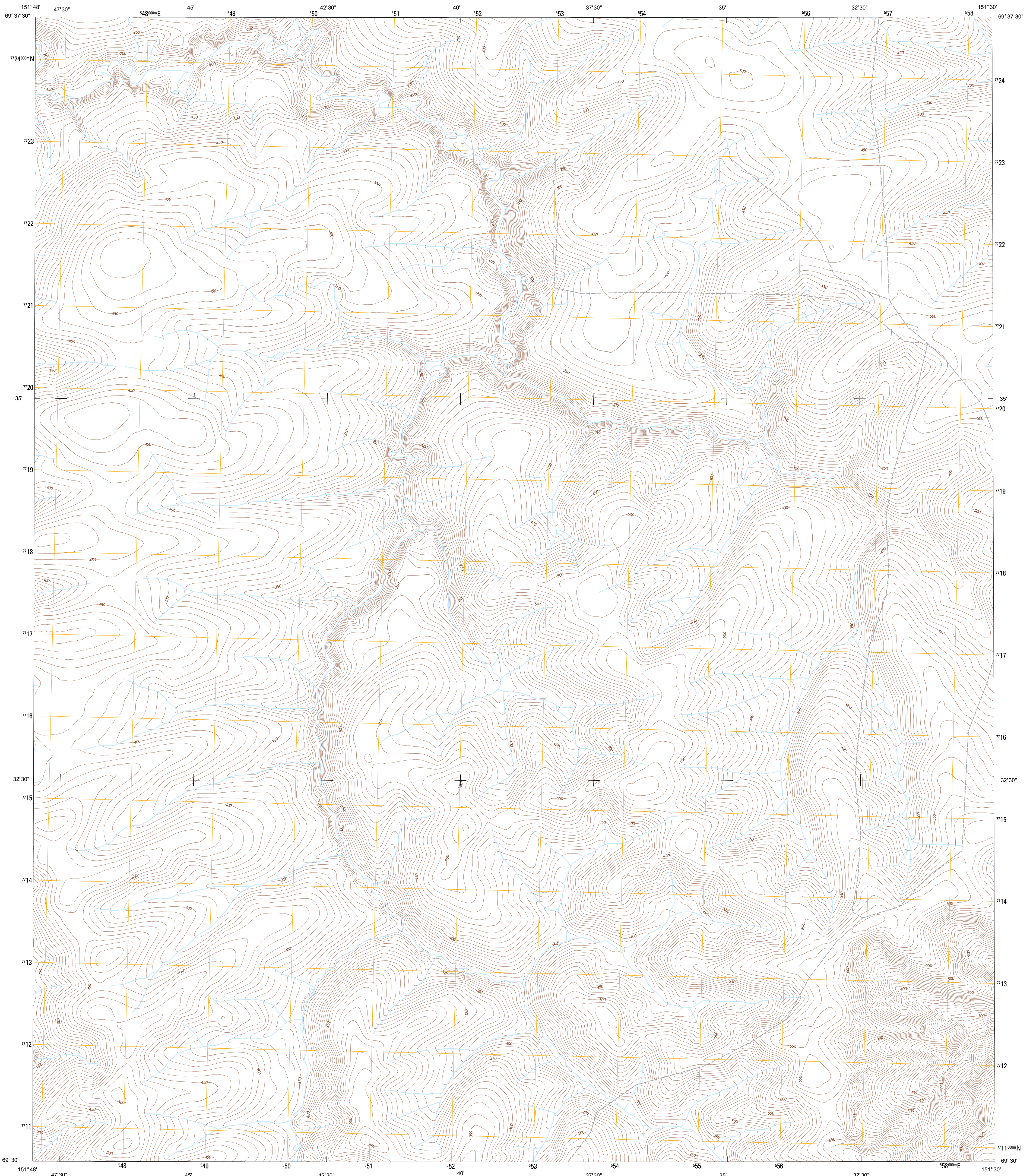




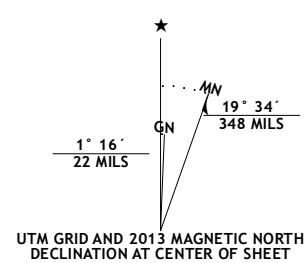
U.S. DEPARTMENT OF THE INTERIOR  
U. S. GEOLOGICAL SURVEY



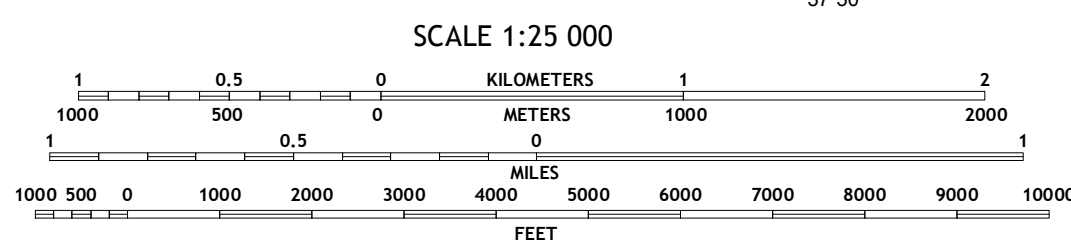
UMIAT C-3 SW QUADRANGLE  
ALASKA-NORTH SLOPE BOROUGH  
7.5-MINUTE SERIES



Produced by the United States Geological Survey  
North American Datum of 1983 (NAD83)  
World Geodetic System of 1984 (WGS84). Projection and  
1 000-meter grid: Universal Transverse Mercator, Zone 05W



U.S. National Grid 100,000-m Square ID
NT
Grid Zone Designation 05W



QUADRANGLE LOCATION

ROAD CLASSIFICATION	
Expressway	Local Connector
Secondary Hwy	Local Road
Ramp	4WD
Interstate Route	US Route
	State Route

Imagery.....SPOT, ©2009 - 2010  
Roads.....©2006-2013 TomTom  
Names.....GNIS, 2013  
Hydrography.....National Hydrography Dataset, 2009  
Contours.....National Elevation Dataset, 2008  
Boundaries.....Census, IBWC, IBC, USGS, 1972 - 2012  
Public Land Survey System.....BLM, 2006 - 2008

CONTOUR INTERVAL 10 FEET  
NORTH AMERICAN VERTICAL DATUM OF 1988  
CONTOURS MAY NOT MEET NATIONAL MAP ACCURACY STANDARDS  
This map was produced to conform with the  
National Geospatial Program US Topo Product Standard, 2011.  
A metadata file associated with this product is draft version 0.6.10

1	2	3
4	5	
6	7	8

ADJOINING QUADRANGLES

- 1 Umiat (C-4) NE
- 2 Umiat (C-3) NW
- 3 Umiat (C-3) NE
- 4 Umiat (C-4) SE
- 5 Umiat (C-3) SE
- 6 Umiat (B-4) NE
- 7 Umiat (B-3) NW
- 8 Umiat (B-3) NE

UMIAT C-3 SW, AK  
2013

