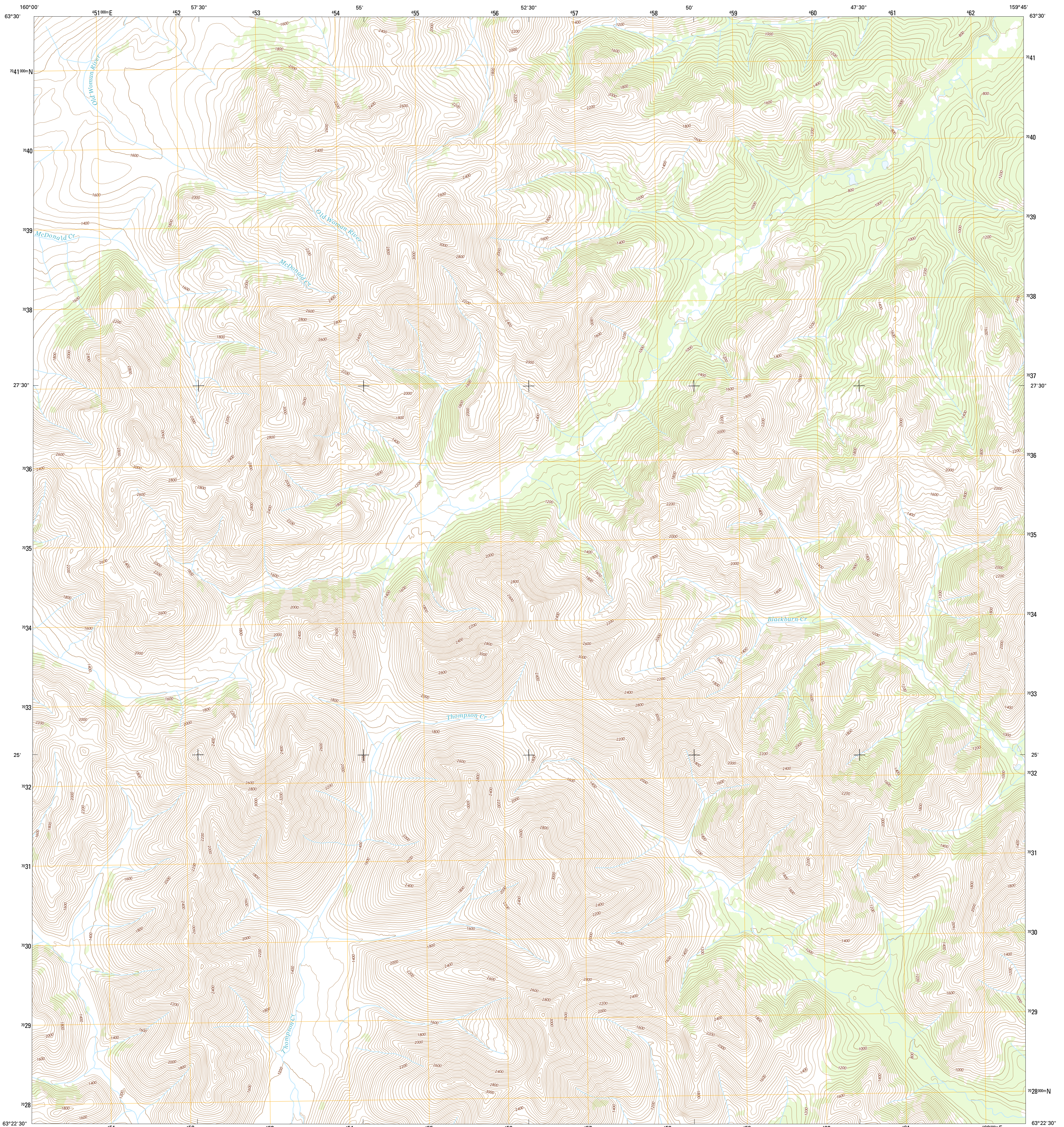




U.S. DEPARTMENT OF THE INTERIOR  
U.S. GEOLOGICAL SURVEY



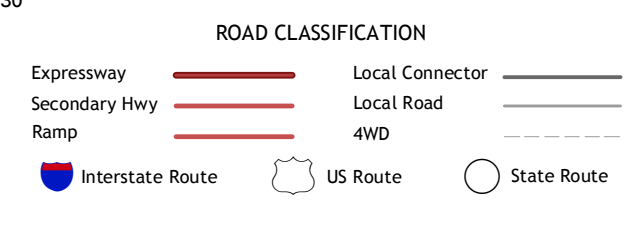
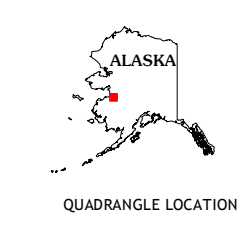
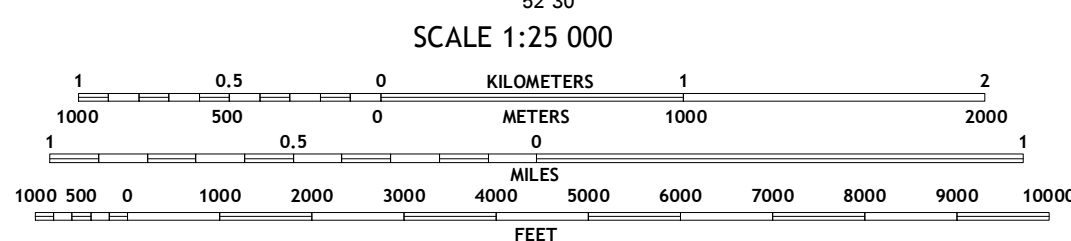
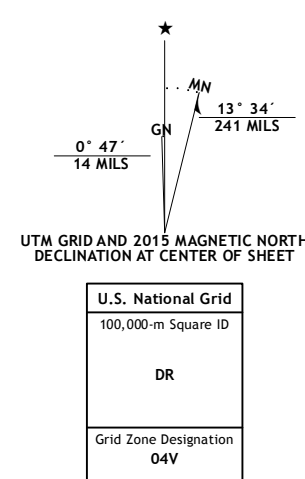
UNALAKLEET B-2 NW QUADRANGLE  
ALASKA  
7.5-MINUTE SERIES



Produced by the United States Geological Survey  
North American Datum of 1983 (NAD83)  
World Geodetic System of 1984 (WGS84). Projection and  
1 000-meter grid: Universal Transverse Mercator, Zone 04V

This map is not a legal document. Boundaries may be generalized  
for this map scale. Private lands within government reservations  
may not be shown. Obtain permission before entering private lands

Imagery.....SPOT, ©2010  
Roads.....Alaska Dept. of Transportation, 2013  
Names.....GNIS, 2015  
Hydrography.....National Hydrography Dataset, 2010  
Contours.....National Elevation Dataset, 2013  
Boundaries.....Multiple sources; see metadata file, 1950 - 2015  
Public Land Survey System.....BLM, 2006 - 2008



CONTOUR INTERVAL: 40 FEET  
NORTH AMERICAN VERTICAL DATUM OF 1988

This map was produced to conform with the  
National Geospatial Program US Topo Product Standard, 2011.  
A metadata file associated with this product is draft version 0.6.17

1	2	3
4	5	6
7	8	

ADJOINING QUADRANGLES

- 1 Unalakleet (C-3) SE
- 2 Unalakleet (C-2) SW
- 3 Unalakleet (C-2) SE
- 4 Unalakleet (B-3) NE
- 5 Unalakleet (B-2) NE
- 6 Unalakleet (B-3) SE
- 7 Unalakleet (B-2) SE
- 8 Unalakleet (B-2) SE

UNALAKLEET B-2 NW, AK  
2015

