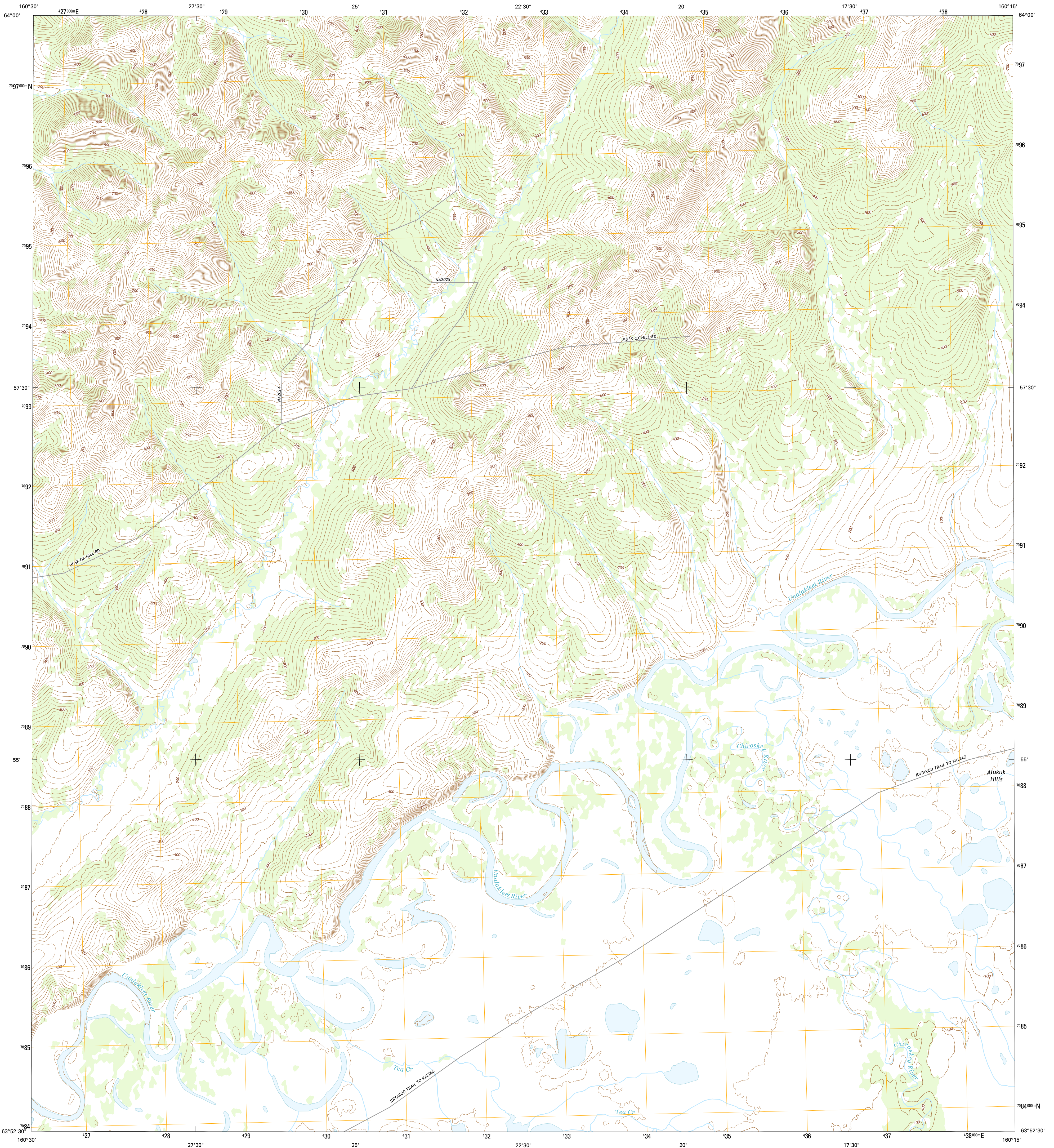




U.S. DEPARTMENT OF THE INTERIOR  
U.S. GEOLOGICAL SURVEY



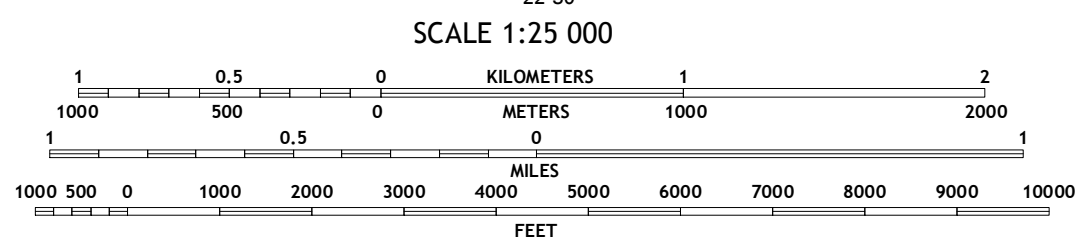
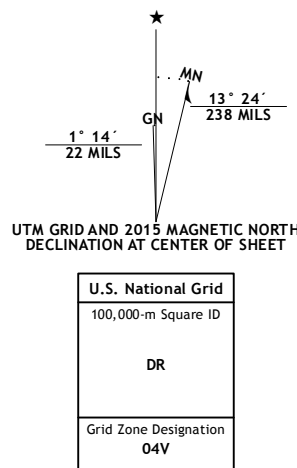
UNALAKLEET D-3 NW QUADRANGLE  
ALASKA  
7.5-MINUTE SERIES



Produced by the United States Geological Survey  
North American Datum of 1983 (NAD83)  
World Geodetic System of 1984 (WGS84). Projection and  
1 000-meter grid: Universal Transverse Mercator, Zone 04V

This map is not a legal document. Boundaries may be generalized  
for this map scale. Private lands within government reservations  
may not be shown. Obtain permission before entering private lands

Imagery.....SPOT, ©2009  
Roads.....Alaska Dept. of Transportation, 2013  
Names.....GNIS, 2015  
Hydrography.....National Hydrography Dataset, 2009  
Contours.....National Elevation Dataset, 2014  
Boundaries.....Multiple sources; see metadata file, 1950 - 2015  
Public Land Survey System.....BLM, 2006 - 2008

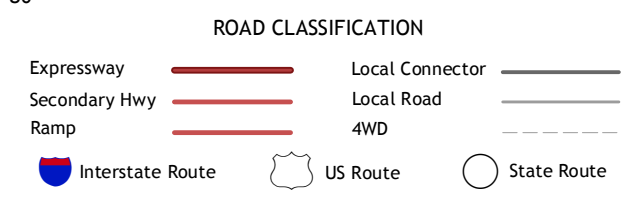


CONTOUR INTERVAL 20 FEET  
NORTH AMERICAN VERTICAL DATUM OF 1988

This map was produced to conform with the  
National Geospatial Program US Topo Product Standard, 2011.  
A metadata file associated with this product is draft version 0.6.17



QUADRANGLE LOCATION



1	2	3
4	5	6
7	8	

ADJOINING QUADRANGLES

- 1 Norton Bay (A-4) SE
- 2 Norton Bay (A-3) SW
- 3 Norton Bay (A-3) SE
- 4 Unalakleet (D-4) NE
- 5 Unalakleet (D-3) NE
- 6 Unalakleet (D-4) SE
- 7 Unalakleet (D-3) SW
- 8 Unalakleet (D-3) SE

UNALAKLEET D-3 NW, AK  
2015

