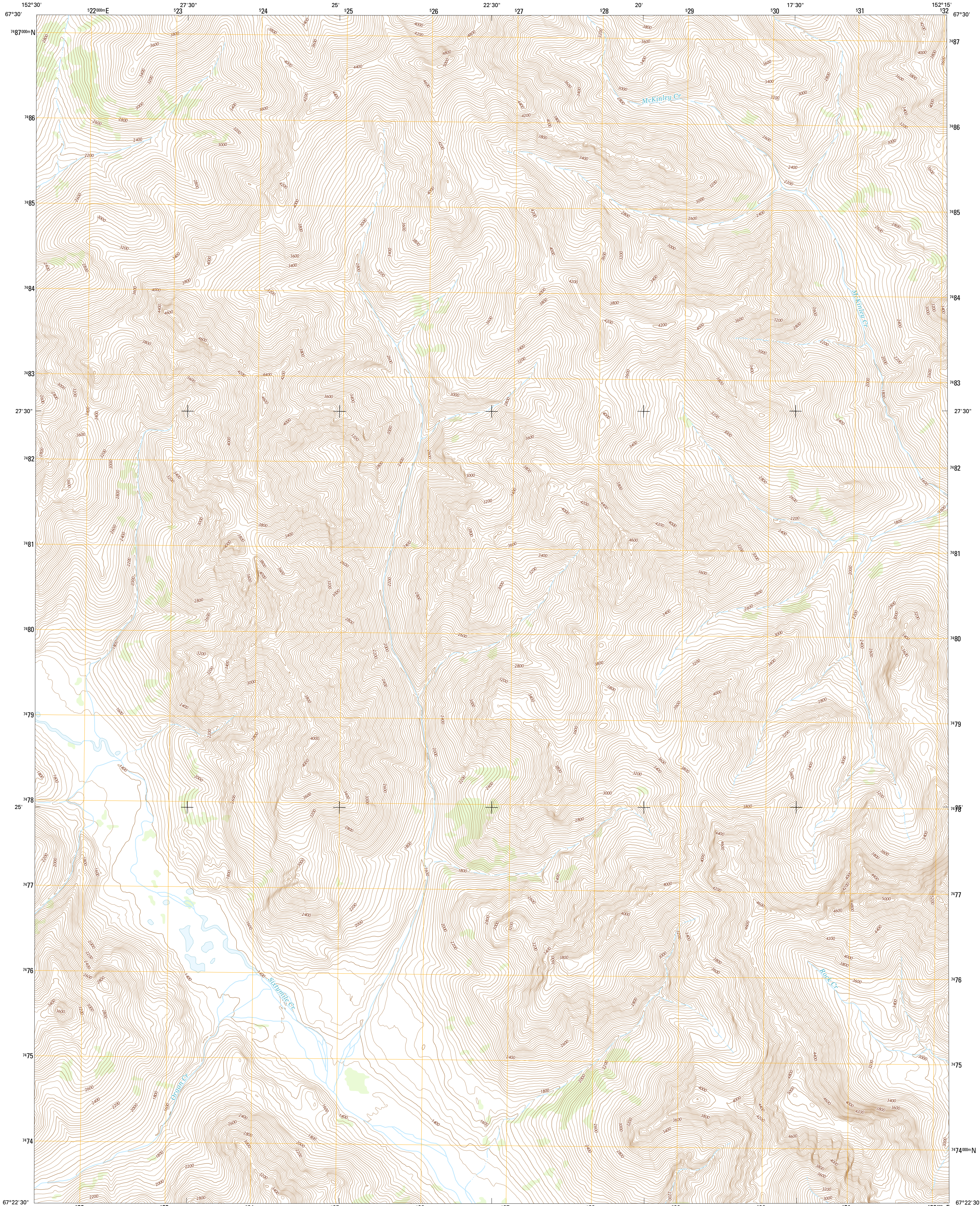




U.S. DEPARTMENT OF THE INTERIOR  
U.S. GEOLOGICAL SURVEY



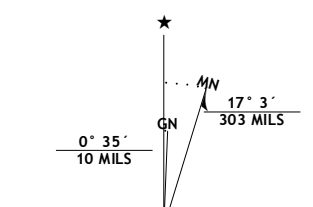
WISEMAN B-5 NW QUADRANGLE  
ALASKA  
7.5-MINUTE SERIES



Produced by the United States Geological Survey  
North American Datum of 1983 (NAD83)  
World Geodetic System of 1984 (WGS84). Projection and  
1000-meter grid: Universal Transverse Mercator, Zone 05W  
10 000-foot ticks: Alaska Coordinate System of 1983 (zone 4)

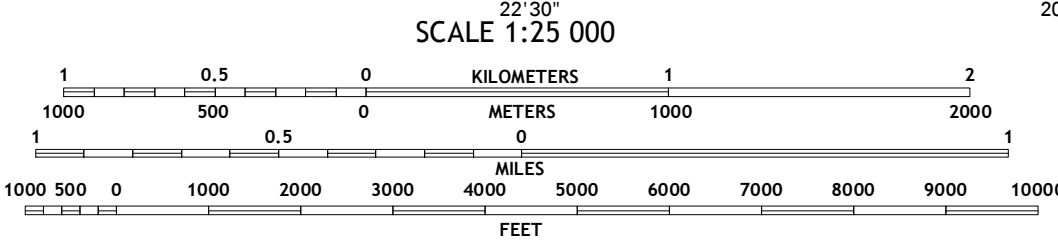
This map is not a legal document. Boundaries may be  
generalized for this map scale. Private lands within government  
reservations may not be shown. Obtain permission before  
entering private lands.

Imagery..... SPOT6, 2009 - 2015  
Roads..... Alaska Dept. of Transportation, 2014  
Names..... GNS, 2016  
Hydrography..... National Hydrography Dataset, 2010  
Contours..... National Elevation Dataset, 2015  
Boundaries..... Multiple sources; see metadata file, 1950 - 2016  
Public Land Survey System..... BLM, 2006 - 2008  
Wetlands..... FWS National Wetlands Inventory 1977 - 2014



UTM GRID AND 2016 MAGNETIC NORTH DECLINATION AT CENTER OF SHEET

U.S. National Grid 100,000-m Square ID
NQ
Grid Zone Designation 05W



SCALE 1:25 000  
CONTOUR INTERVAL 40 FEET  
NORTH AMERICAN VERTICAL DATUM OF 1988

This map was produced to conform with the  
National Geospatial Program US Topo Product Standard, 2011.  
A metadata file associated with this product is draft version 0.6.18



QUADRANGLE LOCATION

ROAD CLASSIFICATION

Expressway	Local Connector
Secondary Hwy	Local Road
Ramp	4WD
Interstate Route	US Route
	State Route

1	2	3	1 Wiseman (C-6) SE
			2 Wiseman (C-5) SW
			3 Wiseman (C-5) SE
4		5	4 Wiseman (B-4) NE
			5 Wiseman (B-5) NE
			6 Wiseman (B-6) SE
6	7	8	7 Wiseman (B-5) SW
			8 Wiseman (B-5) SE

ADJOINING QUADRANGLES

WISEMAN B-5 NW, AK  
2016

