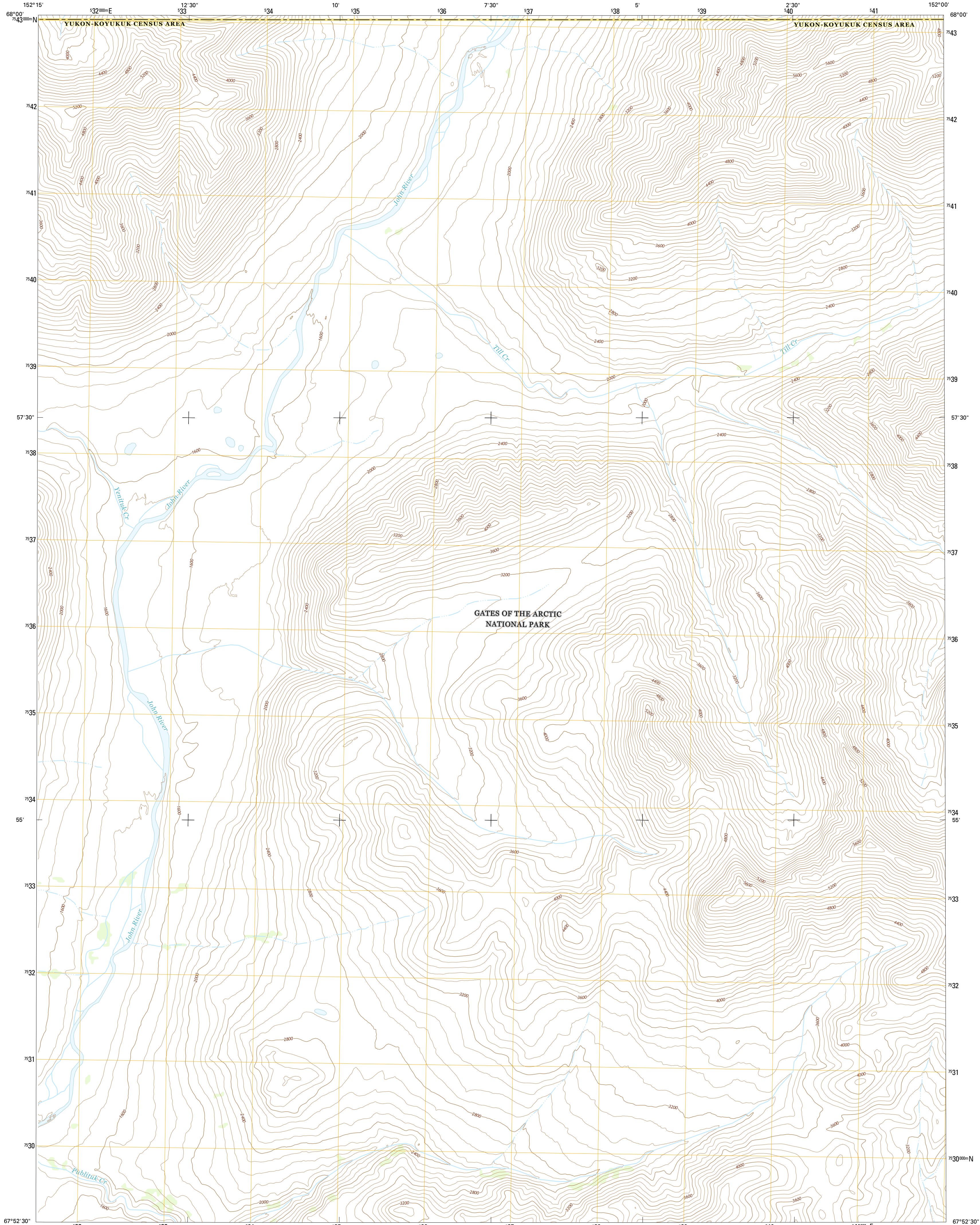




U.S. DEPARTMENT OF THE INTERIOR  
U.S. GEOLOGICAL SURVEY



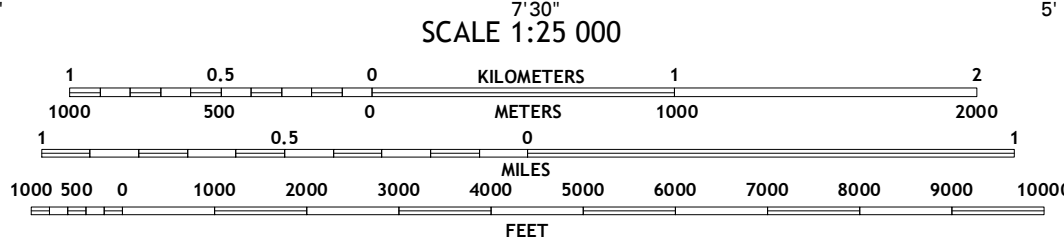
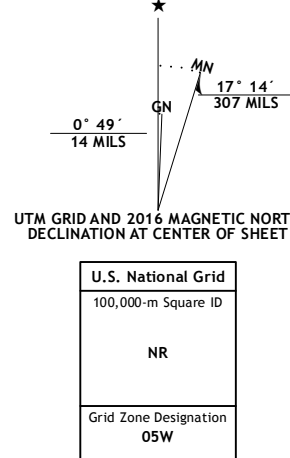
WISEMAN D-5 NE QUADRANGLE  
ALASKA  
7.5-MINUTE SERIES



Produced by the United States Geological Survey  
North American Datum of 1983 (NAD83)  
World Geodetic System of 1984 (WGS84), Projection and  
1000-meter grid: Universal Transverse Mercator, Zone 09W  
10 000-foot ticks: Alaska Coordinate System of 1983 (zone 4)

This map is not a legal document. Boundaries may be  
generalized for this map scale. Private lands within government  
reservations may not be shown. Obtain permission before  
entering private lands.

Imagery.....SPOTC, 2009 - 2015  
Roads.....Alaska Dept. of Transportation, 2014  
Names.....GNS, 2016  
Hydrography.....National Hydrography Dataset, 2010  
Contours.....National Elevation Dataset, 2015  
Boundaries.....Multiple sources; see metadata file, 1950 - 2016  
Public Land Survey System.....BLM, 2006 - 2008  
Wetlands.....FWS National Wetlands Inventory 1977 - 2014

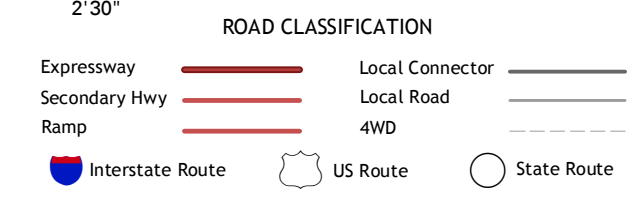


CONTOUR INTERVAL 80 FEET  
NORTH AMERICAN DATUM OF 1988

This map was produced to conform with the  
National Geospatial Program US Topo Product Standard, 2011.  
A metadata file associated with this product is draft version 0.6.18



QUADRANGLE LOCATION



1	2	3
4	5	6
7	8	

ADJOINING QUADRANGLES: 1 Chandler Lake (A-5) SE and (A-4) SW  
2 Chandler Lake (A-4) SW and (A-4) SE  
3 Chandler Lake (A-3) SW and (A-4) SE  
4 Wiseman (D-5) NW  
5 Wiseman (D-4) NW  
6 Wiseman (D-5) SW  
7 Wiseman (D-5) SE  
8 Wiseman (D-4) SW

WISEMAN D-5 NE, AK  
2016

