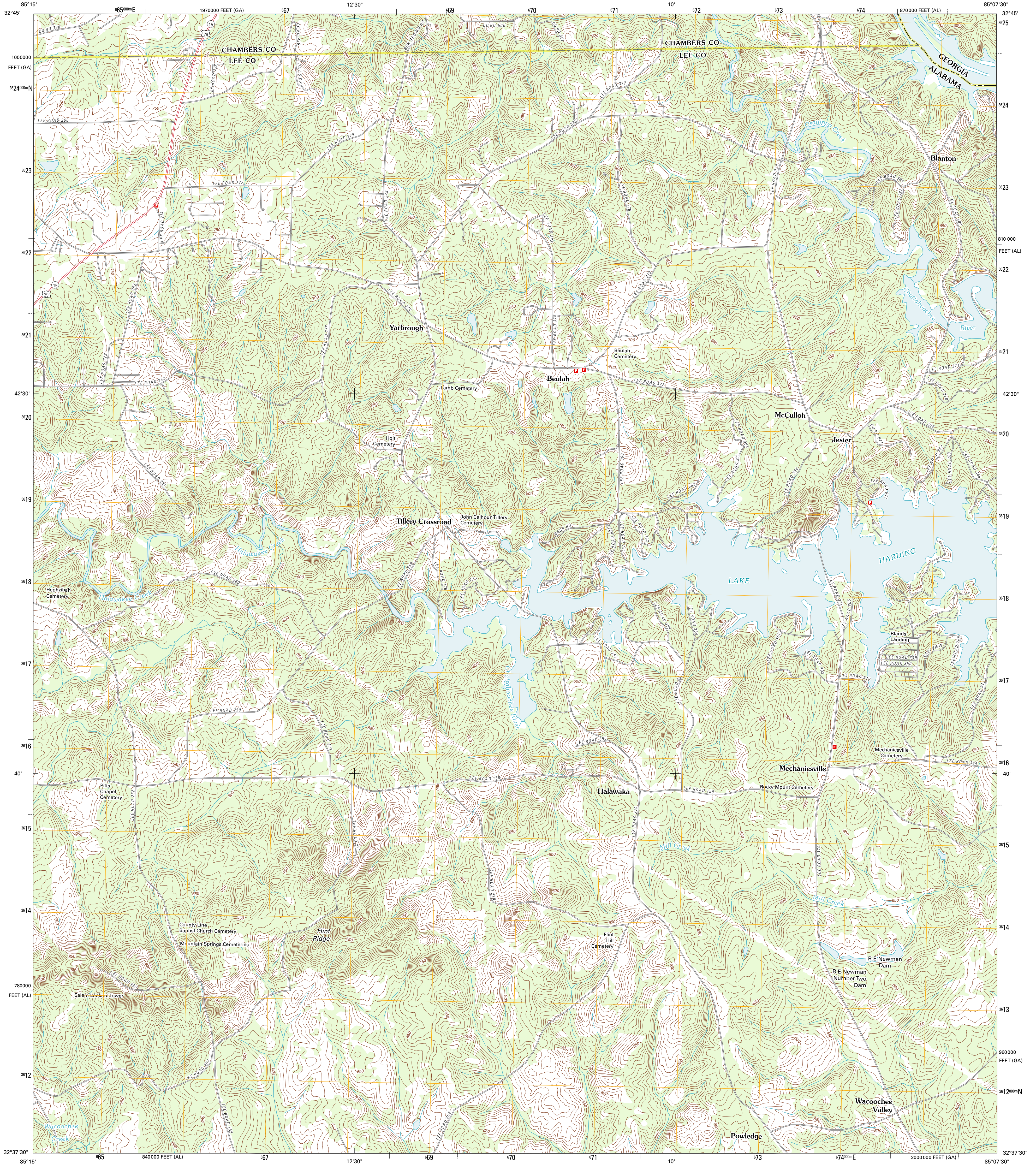




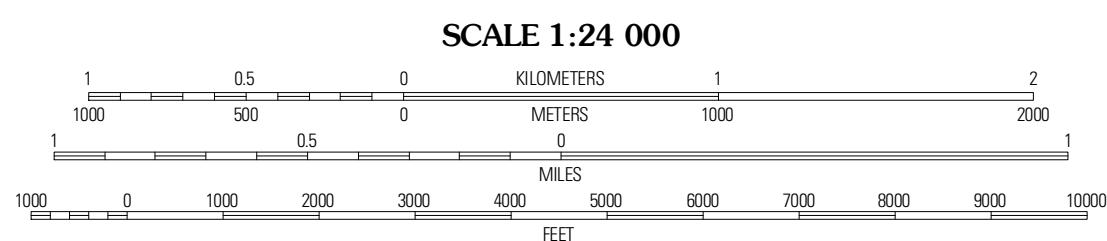
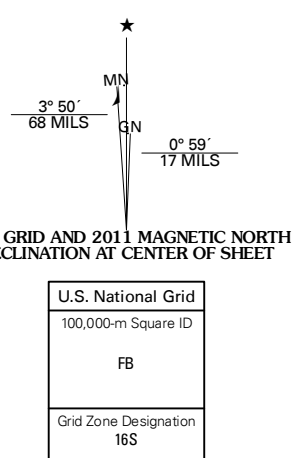
U.S. DEPARTMENT OF THE INTERIOR  
U. S. GEOLOGICAL SURVEY



BEULAH QUADRANGLE  
ALABAMA-GEORGIA  
7.5-MINUTE SERIES



Produced by the United States Geological Survey  
North American Datum of 1983 (NAD83)  
World Geodetic System of 1984 (WGS84). Projection and  
1 000-meter grid: Universal Transverse Mercator, Zone 16S  
10 000-foot ticks: Alabama Coordinate System of 1983 (east  
zone), Georgia Coordinate System of 1983 (west zone)



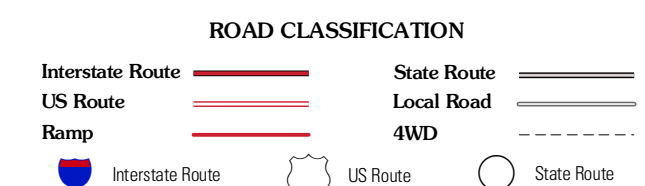
CONTOUR INTERVAL 10 FEET  
NORTH AMERICAN VERTICAL DATUM OF 1988

This map was produced to conform with the  
National Geospatial Program US Topo Product Standard, 2011.  
A metadata file associated with this product is draft version 0.6.0



QUADRANGLE LOCATION

Cassata	Lanett	Whitesville
Opelika	Beulah	Bartlett's Ferry Dam
Parkers Crossroads	Bleeker	Smiths Station



BEULAH, AL-GA  
2011

ADJOINING 7.5 QUADRANGLES