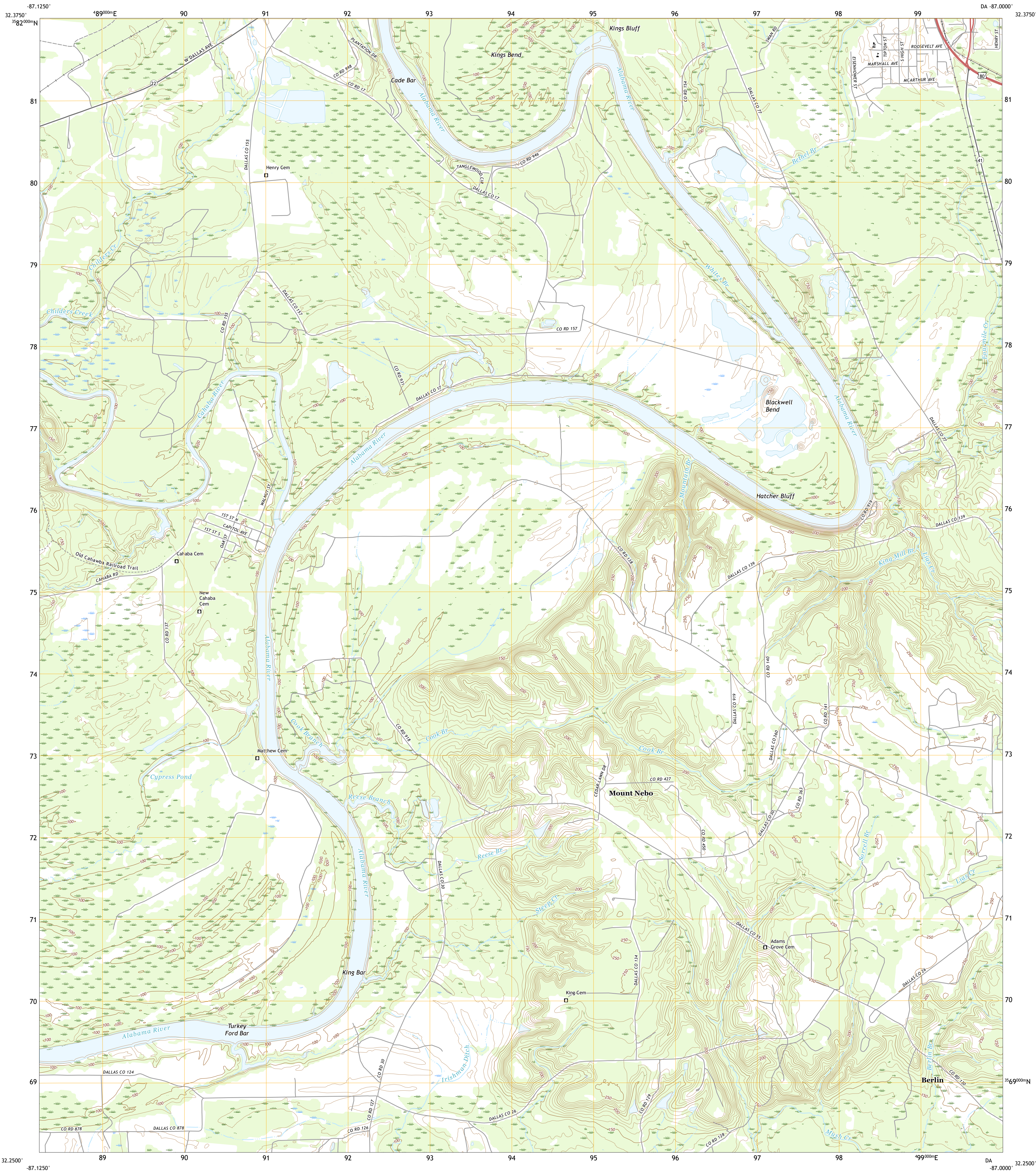




U.S. DEPARTMENT OF THE INTERIOR
U.S. GEOLOGICAL SURVEY

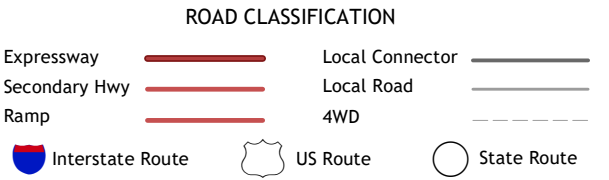
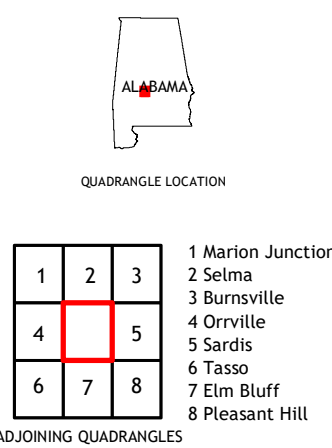
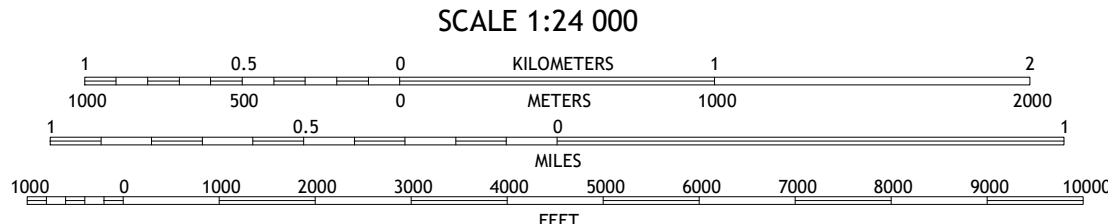
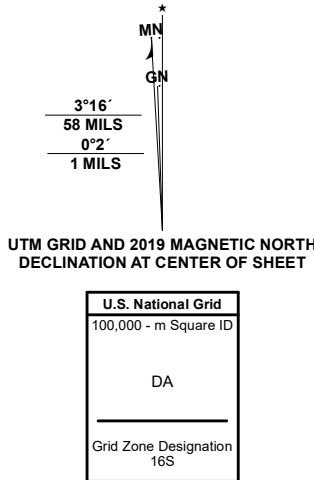


BLACKWELL BEND QUADRANGLE
ALABAMA - DALLAS COUNTY
7.5-MINUTE SERIES



Produced by the United States Geological Survey
North American Datum of 1983 (NAD83)
World Geodetic System of 1984 (WGS84) - Projection and
1 000-meter grid/Universal Transverse Mercator, Zone 16S
This map is not a legal document. Boundaries may be
generalized for this map scale. Private lands within government
reservations may not be shown. Obtain permission before
entering private lands.

ImageryNAIP	November	2019
RoadsU.S. Census Bureau	2017	
NamesGNIS	1980	2020
HydrographyNational Hydrography Dataset	2003	2018
ContoursNational Elevation Dataset	2019	
BoundariesMultiple sources: see metadata file	2018	2019
Public Land Survey SystemBLM	2020	
WetlandsFWS National Wetlands Inventory	1981	



BLACKWELL BEND, AL
2020

