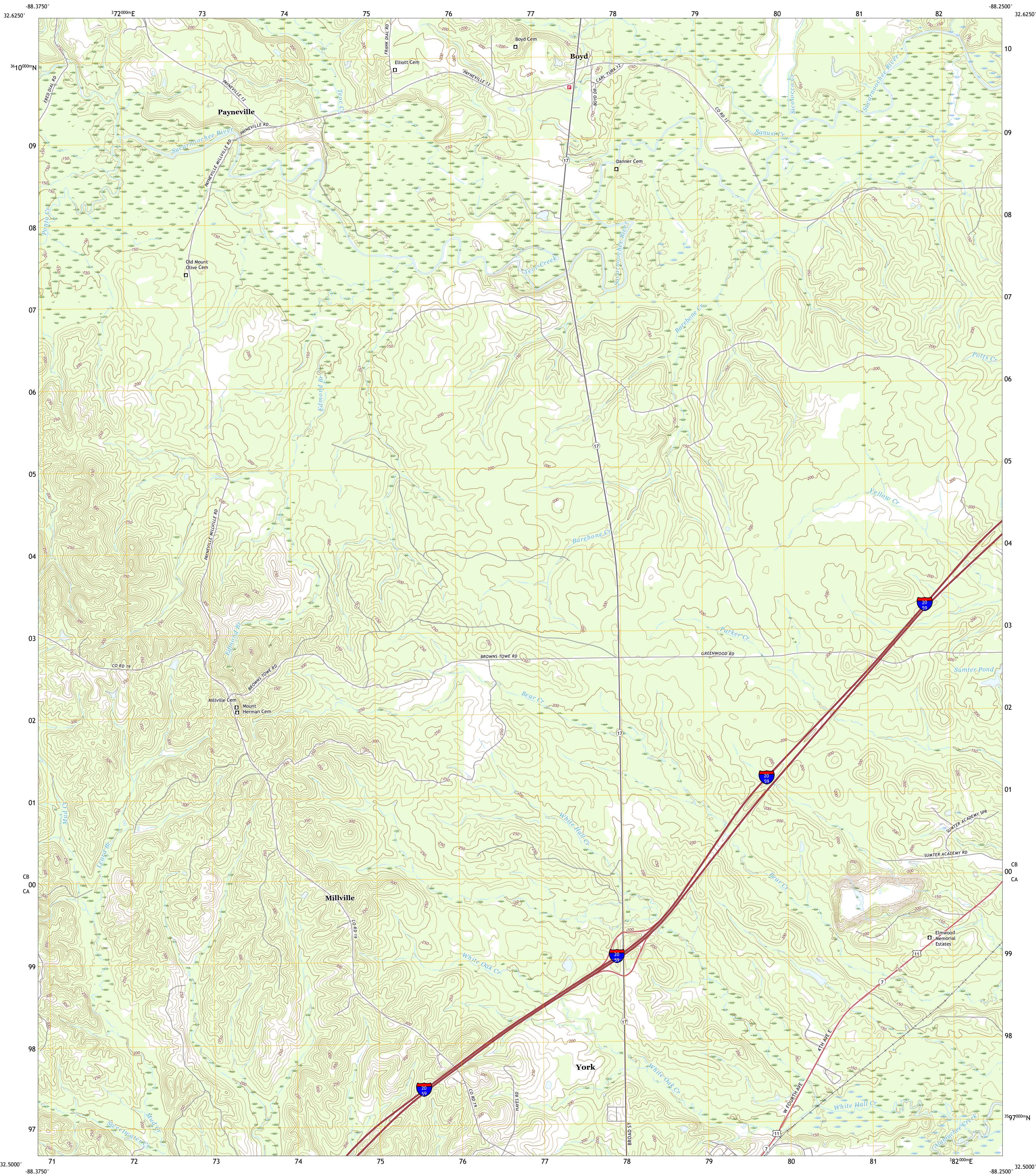




U.S. DEPARTMENT OF THE INTERIOR
U.S. GEOLOGICAL SURVEY

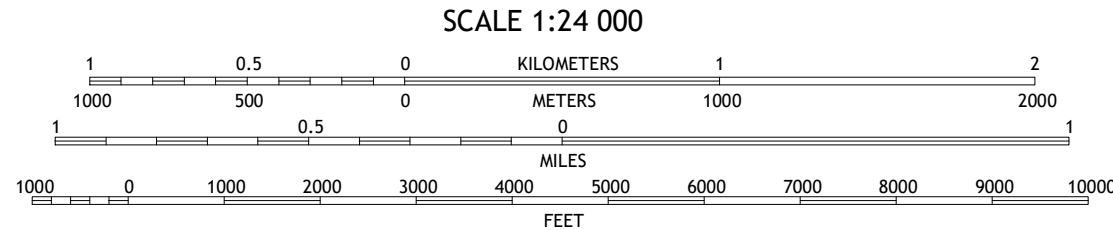
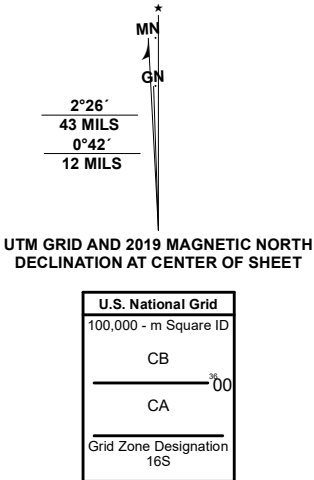


BOYD QUADRANGLE
ALABAMA - SUMTER COUNTY
7.5-MINUTE SERIES

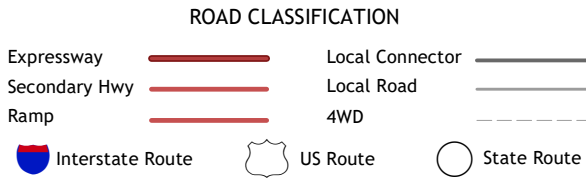
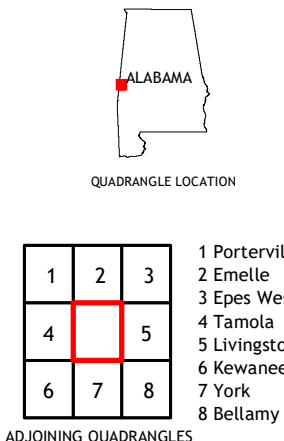


Produced by the United States Geological Survey
North American Datum of 1983 (NAD83)
World Geodetic System of 1984 (WGS84). Projection and
1 000-meter grid/Universal Transverse Mercator, Zone 16S
This map is not a legal document. Boundaries may be
generalized for this map scale. Private lands within government
reservations may not be shown. Obtain permission before
entering private lands.

ImageryNAIP	November	2019
RoadsU.S. Census Bureau	2017	
NamesGNIS	1980	2020
HydrographyNational Hydrography Dataset	1899 - 2019	
ContoursNational Elevation Dataset	2007 - 2019	
BoundariesMultiple sources: see metadata file	2018 - 2019	
Public Land Survey SystemBLM	2020	
WetlandsFWS National Wetlands Inventory	1980 - 1981	



CONTOUR INTERVAL 10 FEET
NORTH AMERICAN VERTICAL DATUM OF 1988
This map was produced to conform with the
National Geospatial Program US Topo Product Standard, 2011.
A metadata file associated with this product is draft version 0.6.18



1	2	3
4	5	6
7	8	

1 Porterville
2 Emelle
3 Epes West
4 Tamola
5 Livingston
6 Kewanee
7 York
8 Bellamy

BOYD, AL
2020

