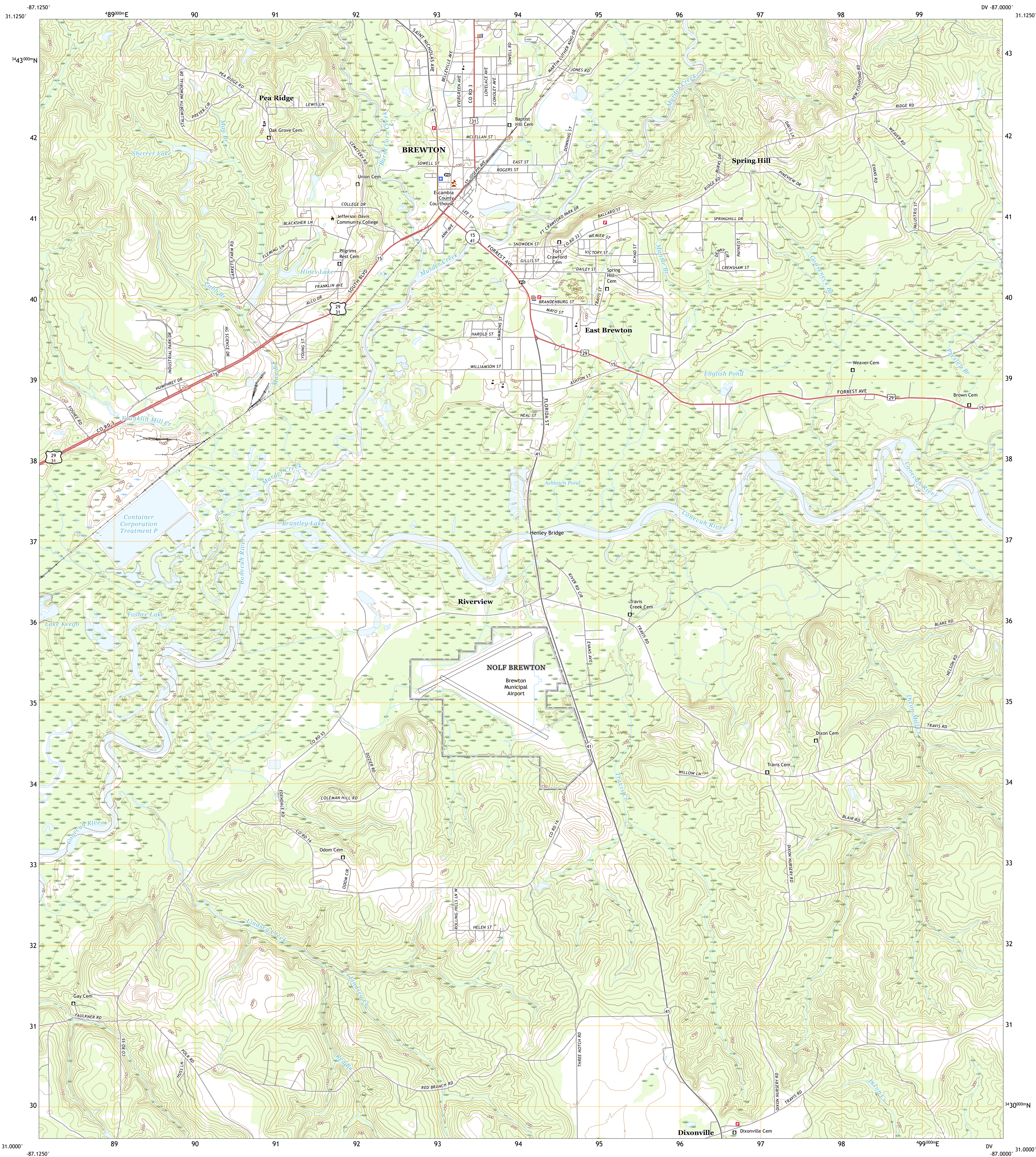




U.S. DEPARTMENT OF THE INTERIOR  
U.S. GEOLOGICAL SURVEY



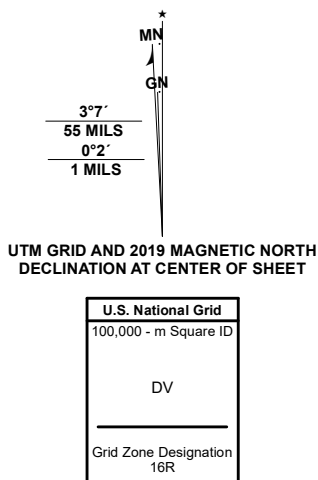
BREWTON SOUTH QUADRANGLE  
ALABAMA - ESCAMBIA COUNTY  
7.5-MINUTE SERIES



Produced by the United States Geological Survey

North American Datum of 1983 (NAD83)  
World Geodetic System of 1984 (WGS84) - Projection and  
1 000-meter grid/Universal Transverse Mercator, Zone 16R  
This map is not a legal document. Boundaries may be  
generalized for this map scale. Private lands within government  
reservations may not be shown. Obtain permission before  
entering private lands.

Imagery.....NAIP, November 2019  
Roads.....U.S. Census Bureau, 2017  
Names.....GNIS, 1980 - 2020  
Hydrography.....National Hydrography Dataset, 2000 - 2019  
Contours.....National Elevation Dataset, 2008 - 2016  
Boundaries.....Multiple sources: see metadata file, 2018 - 2019  
Public Land Survey System.....BLM, 2020  
Wetlands.....FWS National Wetlands Inventory 1981 - 2013



CONTOUR INTERVAL 10 FEET  
NORTH AMERICAN VERTICAL DATUM OF 1988  
This map was produced to conform with the  
National Geospatial Program US Topo Product Standard, 2011.  
A metadata file associated with this product is draft version 0.6.18



QUADRANGLE LOCATION

1	2	3
4	5	6
7	8	9

1 Wallace  
2 Brewton North  
3 Shippis Creek  
4 Pailard  
5 Roberts  
6 Jay  
7 Fideis  
8 McLellan

ROAD CLASSIFICATION		
Expressway	Local Connector	
Secondary Hwy	Local Road	
Ramp	4WD	
Interstate Route	US Route	State Route

BREWTON SOUTH, AL  
2020



NSN 1643016351968  
NSA REF NO. USGS X 2 4 K 5 3 8 8