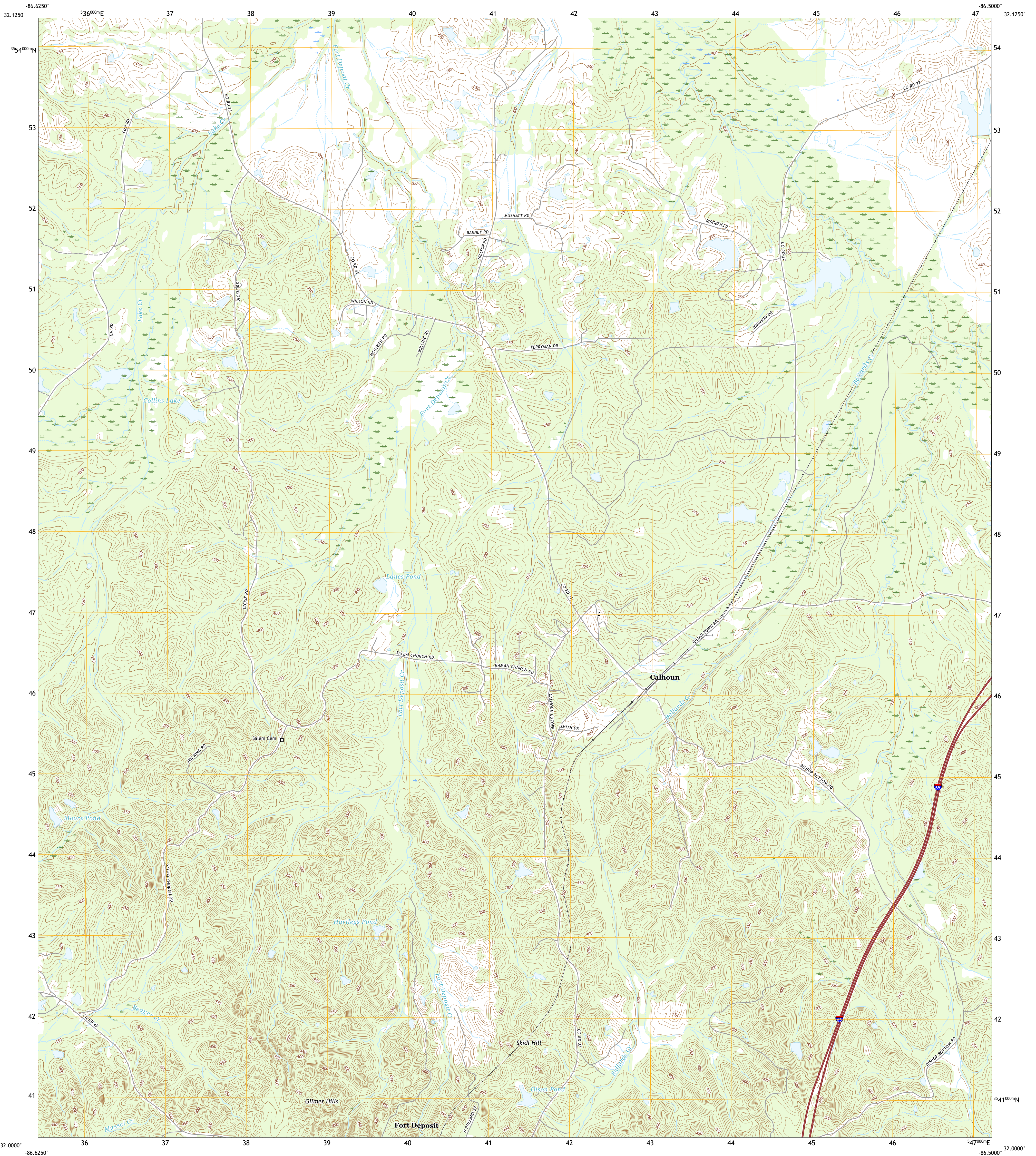




U.S. DEPARTMENT OF THE INTERIOR  
U.S. GEOLOGICAL SURVEY

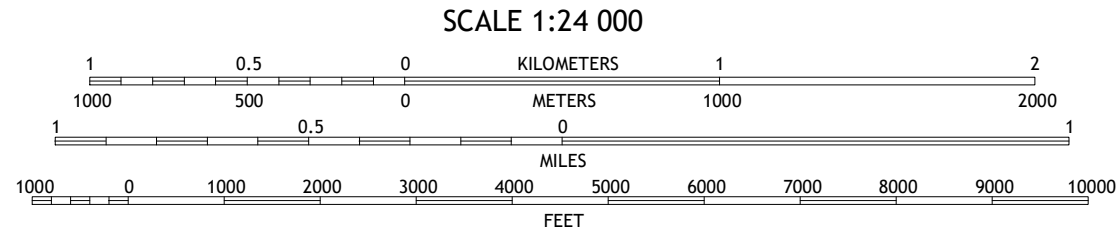
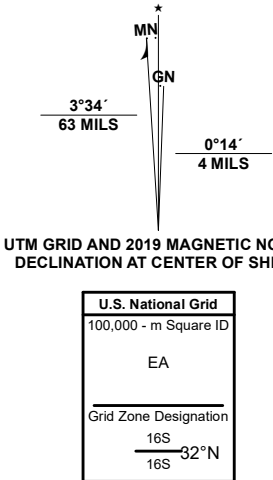


CALHOUN QUADRANGLE  
ALABAMA - LOWNDES COUNTY  
7.5-MINUTE SERIES



Produced by the United States Geological Survey  
North American Datum of 1983 (NAD83)  
World Geodetic System of 1984 (WGS84). Projection and  
1 000-meter grid/Universal Transverse Mercator, Zone 16S16R  
This map is not a legal document. Boundaries may be  
generalized for this map scale. Private lands within government  
reservations may not be shown. Obtain permission before  
entering private lands.

Imagery.....	NAIP,	September	2019
Roads.....	U.S. Census Bureau,	2017	
Names.....	GNIS,	1980	2020
Hydrography.....	National Hydrography Dataset,	1999 - 2018	
Contours.....	National Elevation Dataset,	1999 - 2020	
Boundaries.....	Multiple sources: see metadata file	2016 - 2019	
Public Land Survey System.....	BLM,	2020	
Wetlands.....	FWS National Wetlands Inventory	1981	



CONTOUR INTERVAL 10 FEET  
NORTH AMERICAN VERTICAL DATUM OF 1988  
This map was produced to conform with the  
National Geospatial Program US Topo Product Standard, 2011.  
A metadata file associated with this product is draft version 0.6.18



QUADRANGLE LOCATION

1	2	3
4	5	6
7	8	

1 Gordonville  
2 Hayneville  
3 Letohatchee  
4 Mount Welling  
5 Sandy Ridge  
6 Fort Dale  
7 Fort Deposit  
8 Danielsville

ROAD CLASSIFICATION

Expressway	Local Connector
Secondary Hwy	Local Road
Ramp	4WD
Interstate Route	US Route
	State Route

CALHOUN, AL  
2020



NSN 716 430 1 6 3 5 1 9 0 0  
NSA REF NO. USGS X 2 4 K 6 7 3 0