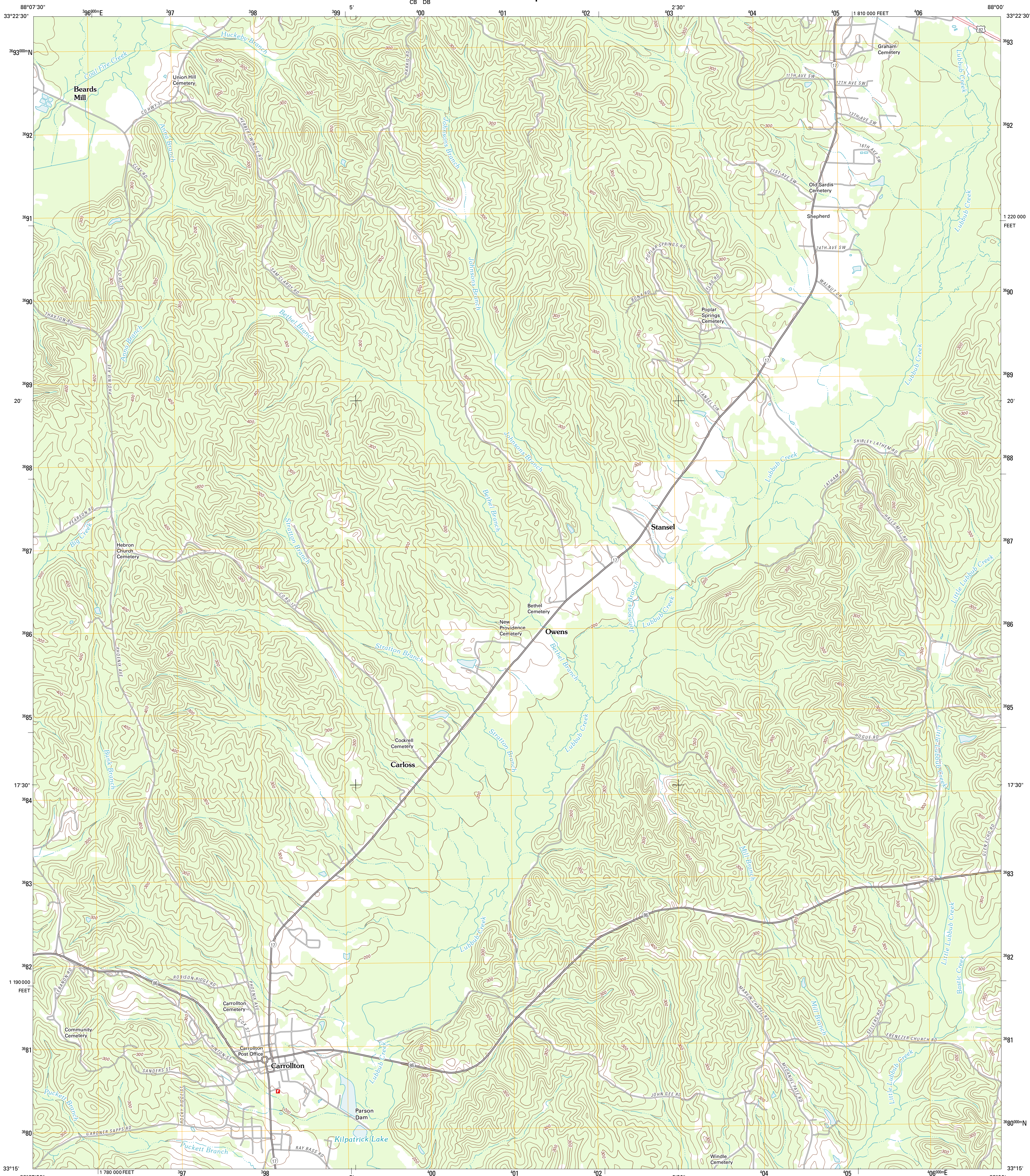




U.S. DEPARTMENT OF THE INTERIOR
U. S. GEOLOGICAL SURVEY



CARROLLTON QUADRANGLE
ALABAMA-PICKENS CO.
7.5-MINUTE SERIES

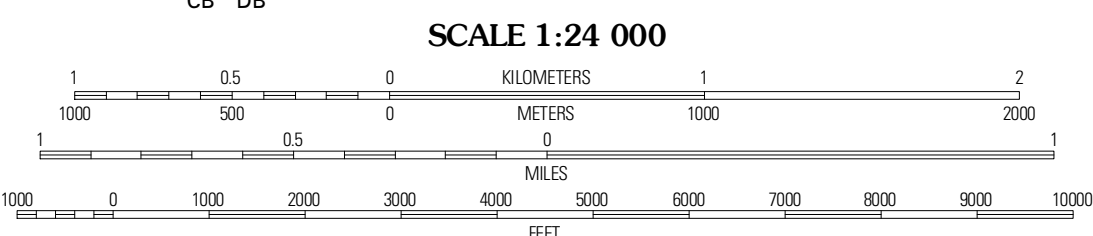


Produced by the United States Geological Survey
North American Datum of 1983 (NAD83)
World Geodetic System of 1984 (WGS84), Projection and
1 000-meter grid: Universal Transverse Mercator, Zone 16S
10 000-foot ticks: Alabama Coordinate System of 1983 (west
zone)

Imagery.....N.A.P., June 2009
Roads.....©2006-2011 TomTom
Names.....GNIS, 2011
Hydrography.....National Hydrography Dataset, 2009
Contours.....National Elevation Dataset, 2007
Boundaries.....Census, IBWC, IBC, USGS, 1972 - 2010

UTM GRID AND 2011 MAGNETIC NORTH DECLINATION AT CENTER OF SHEET

U.S. National Grid	18° 52'	GN
100,000m Square ID	10	
	CB DB	
Grid Zone Designation	16S	



CONTOUR INTERVAL 20 FEET
NORTH AMERICAN VERTICAL DATUM OF 1988

This map was produced to conform with the
National Geospatial Program US Topo Product Standard, 2011.
A metadata file associated with this product is draft version 0.6.0

ROAD CLASSIFICATION

Interstate Route	State Route
US Route	Local Road
Ramp	4WD
Interstate Route	US Route
	State Route

QUADRANGLE LOCATION

Ehalsville	Reform	Palmetto
Reform SW	Carrollton	Gordo
Alcove North	Cunningham	Kirk

ADJOINING 7.5 QUADRANGLES

CARROLLTON, AL
2011