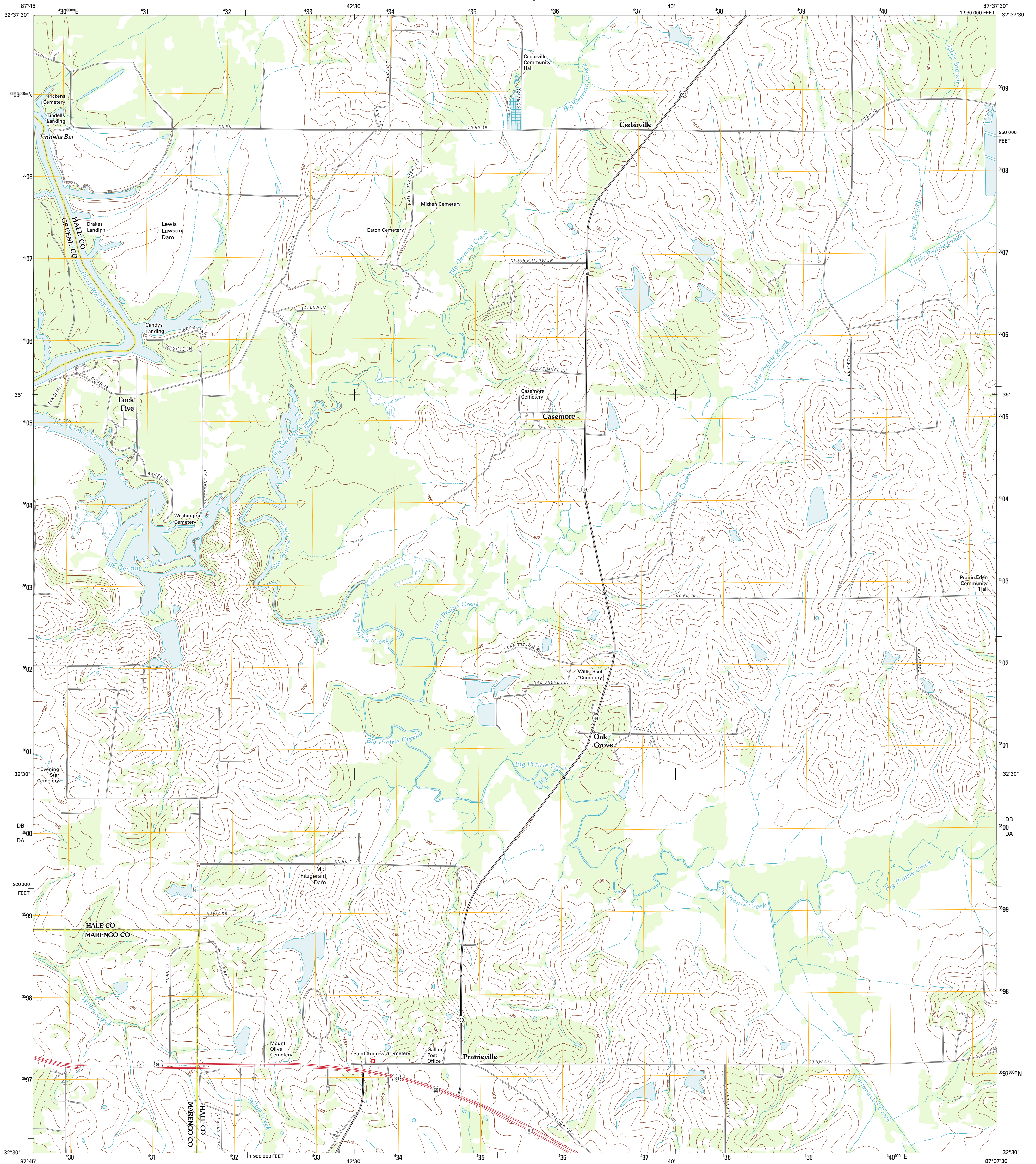




U.S. DEPARTMENT OF THE INTERIOR  
U. S. GEOLOGICAL SURVEY

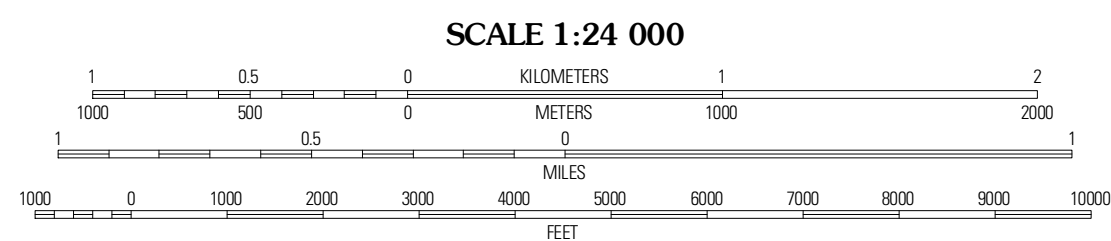
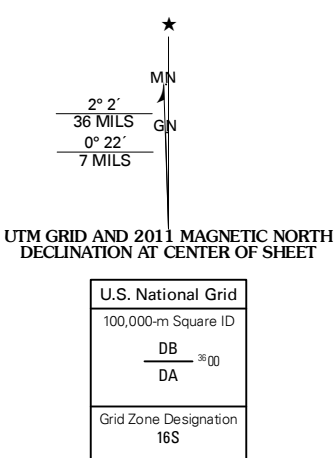


CASEMORE QUADRANGLE  
ALABAMA  
7.5-MINUTE SERIES



Produced by the United States Geological Survey  
North American Datum of 1983 (NAD83)  
World Geodetic System of 1984 (WGS84). Projection and  
1 000-meter grid: Universal Transverse Mercator, Zone 16S  
10 000-foot ticks: Alabama Coordinate System of 1983 (west  
zone)

Imagery: NAIP, June 2009  
Roads: ©2006-2011 TomTom  
Names: GNS, 2011  
Hydrography: National Hydrography Dataset, 2009  
Contours: National Elevation Dataset, 2007  
Boundaries: Census, IBWC, BC, USGS, 1972 - 2010



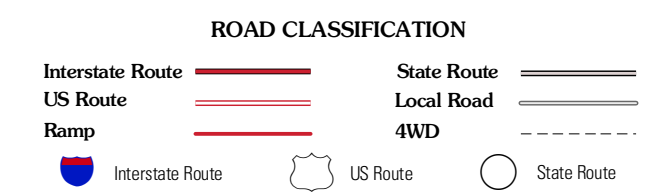
CONTOUR INTERVAL 10 FEET  
NORTH AMERICAN VERTICAL DATUM OF 1988

This map was produced to conform with the  
National Geospatial Program US Topo Product Standard, 2011.  
A metadata file associated with this product is draft version 0.6.0



QUADRANGLE LOCATION

Mason Bend	Milton	Greensboro
Demopolis	Casmore	Neabens
Old Spring Hill	Gallion	Uniontown West



CASEMORE, AL  
2011

ADJOINING 7.5 QUADRANGLES