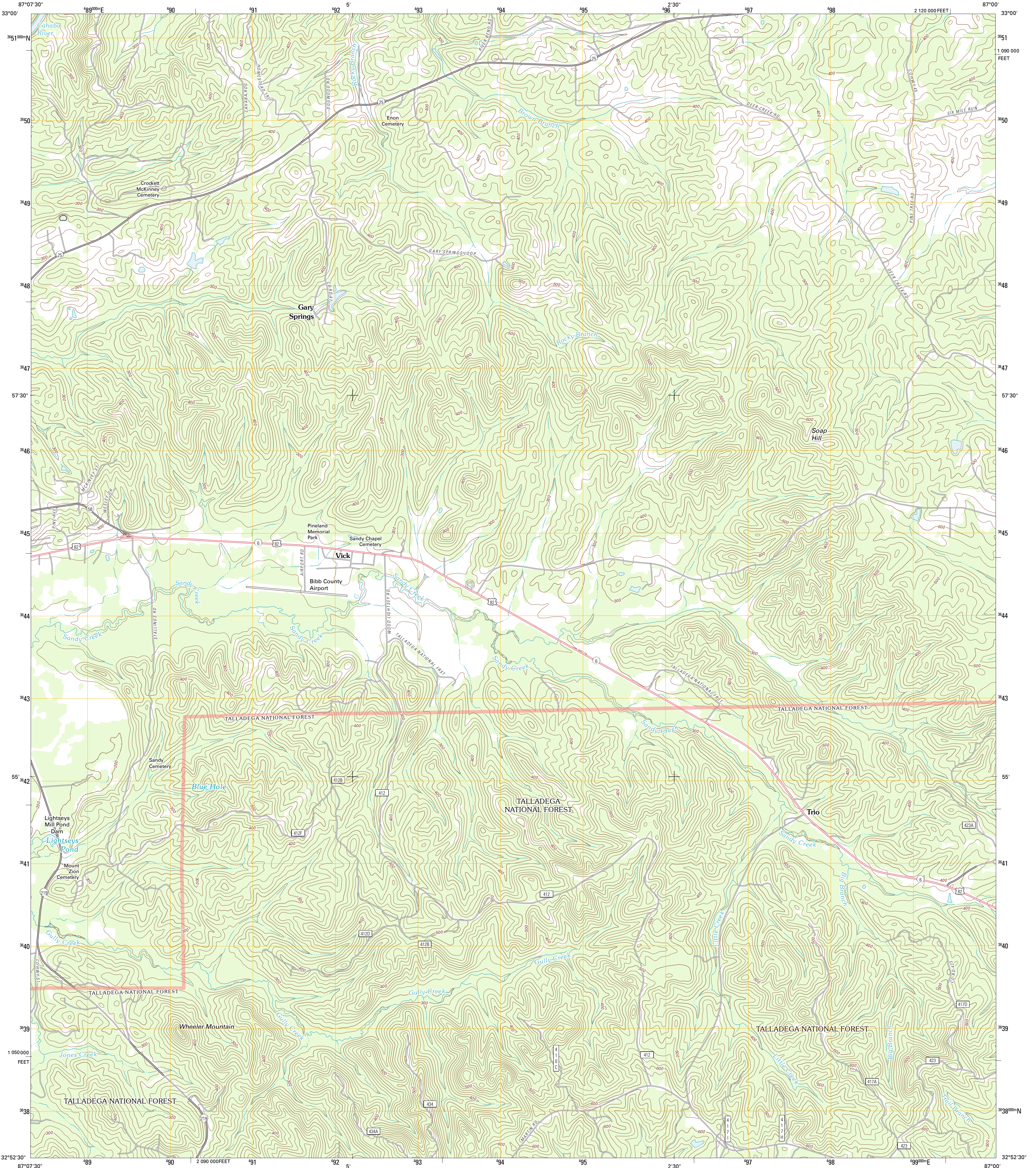




U.S. DEPARTMENT OF THE INTERIOR  
U. S. GEOLOGICAL SURVEY



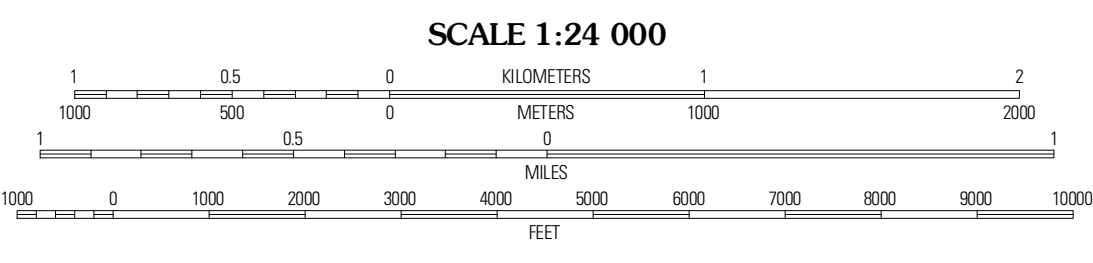
CENTREVILLE EAST QUADRANGLE  
ALABAMA-BIBB CO.  
7.5-MINUTE SERIES



Produced by the United States Geological Survey  
North American Datum of 1983 (NAD83)  
World Geodetic System of 1984 (WGS84). Projection and  
1 000-meter grid: Universal Transverse Mercator, Zone 16S  
10 000-foot ticks: Alabama Coordinate System of 1983 (west  
zone)

UTM GRID AND 2011 MAGNETIC NORTH  
DECLINATION AT CENTER OF SHEET

U.S. National Grid  
100,000-m Square ID  
DB  
Grid Zone Designation  
16S



West Benton West	West Benton East	Aikrich
Centreville West	Centreville East	Randolph
Harrisburg	Ohlmsdorse	Mapleville West

ADJOINING 7.5 QUADRANGLES

**ROAD CLASSIFICATION**

Interstate Route (thick red line)  
US Route (red line)  
Ramp (red line with blue triangle)  
State Route (black line)  
Local Road (thin black line)  
4WD (dashed black line)  
FS Primary Route (blue line with white box)  
FS Passenger Route (black line with white box)  
FS High Clearance Route (black line with white box)

Check with local Forest Service unit  
for current travel conditions and restrictions.

Imagery.....NAP, July 2009  
Roads.....©2006-2011 TomTom  
Roads within US Forest Service Lands.....FS Topo Data  
with limited Forest Service updates, 2009  
Names.....GNIS, 2011  
Hydrography.....National Hydrography Dataset, 2009  
Contours.....National Elevation Dataset, 2003  
Boundaries.....Census, IBWC, IBC, USGS, 1972 - 2010

CONTOUR INTERVAL 20 FEET  
NORTH AMERICAN VERTICAL DATUM OF 1988

This map was produced to conform with the  
National Geospatial Program US Topo Product Standard, 2011.  
A metadata file associated with this product is draft version 0.6.0

CENTREVILLE EAST, AL  
2011