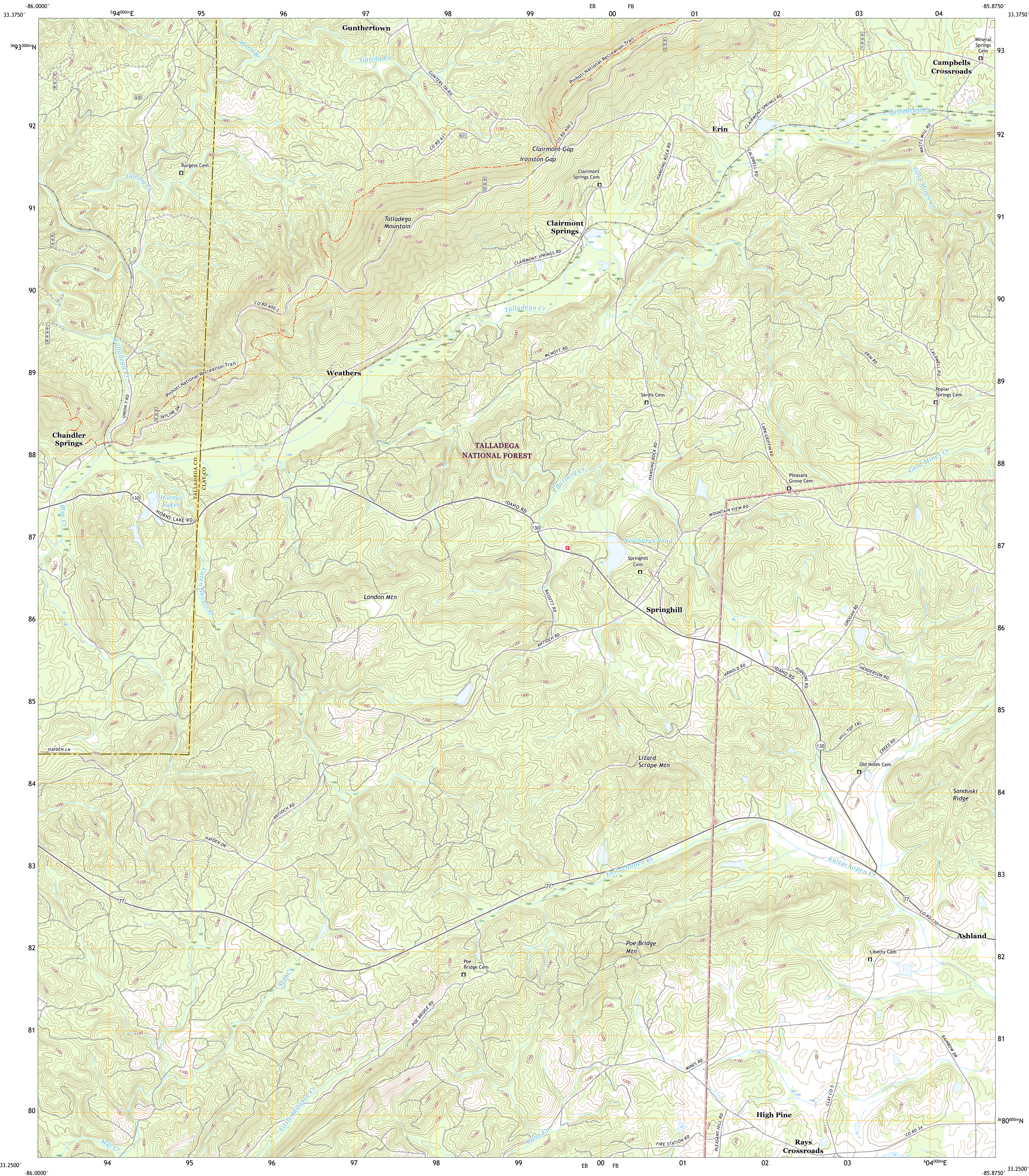




U.S. DEPARTMENT OF THE INTERIOR
U.S. GEOLOGICAL SURVEY



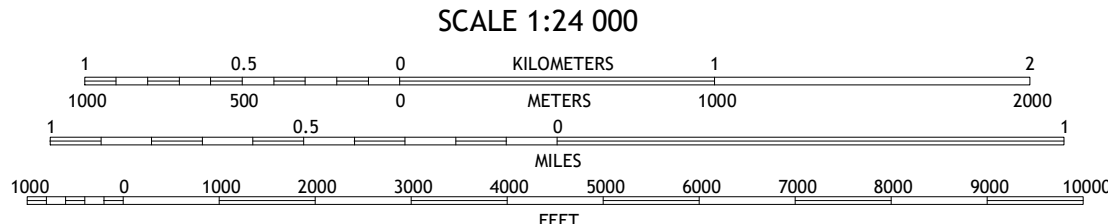
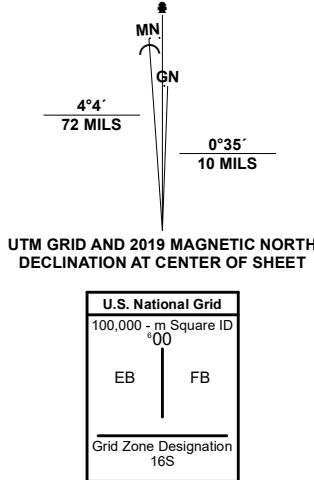
CLAIRMONT SPRINGS QUADRANGLE
ALABAMA
7.5-MINUTE SERIES



Produced by the United States Geological Survey

North American Datum of 1983 (NAD83)
World Geodetic System of 1984 (WGS84) Projection and
1 000-meter grid/Universal Transverse Mercator, Zone 16S
This map is not a legal document. Boundaries may be
generalized for this map scale. Private lands within government
reservations may not be shown. Obtain permission before
entering private lands.

ImageryNAIP	October	2019
RoadsU.S. Census Bureau	2017	
NamesGNIS	1980	2020
HydrographyNational Hydrography Dataset	2000 - 2018	
ContoursNational Elevation Dataset	2013 - 2014	
BoundariesMultiple sources	see metadata file	2018 - 2019
Public Land Survey SystemBLM	2019	
WetlandsFWS National Wetlands Inventory	1981	



CONTOUR INTERVAL 20 FEET
NORTH AMERICAN VERTICAL DATUM OF 1988
This map was produced to conform with the
National Geospatial Program US Topo Product Standard.



1	2	3
4	5	6
7	8	9

ADJOINING QUADRANGLES

- 1 Talladega
- 2 Ironaton
- 3 Cheaha Mountain
- 4 Porter Gap
- 5 Lineville West
- 6 Bulls Gap
- 7 Millerville
- 8 Gillsville

ROAD CLASSIFICATION	
Expressway	Local Connector
Secondary Hwy	Local Road
Ramp	4WD
Interstate Route	US Route
FS Primary Route	FS Passenger Route
	FS High Clearance Route
	State Route

Check with local Forest Service unit
for current travel conditions and restrictions.

CLAIRMONT SPRINGS, AL
2021

