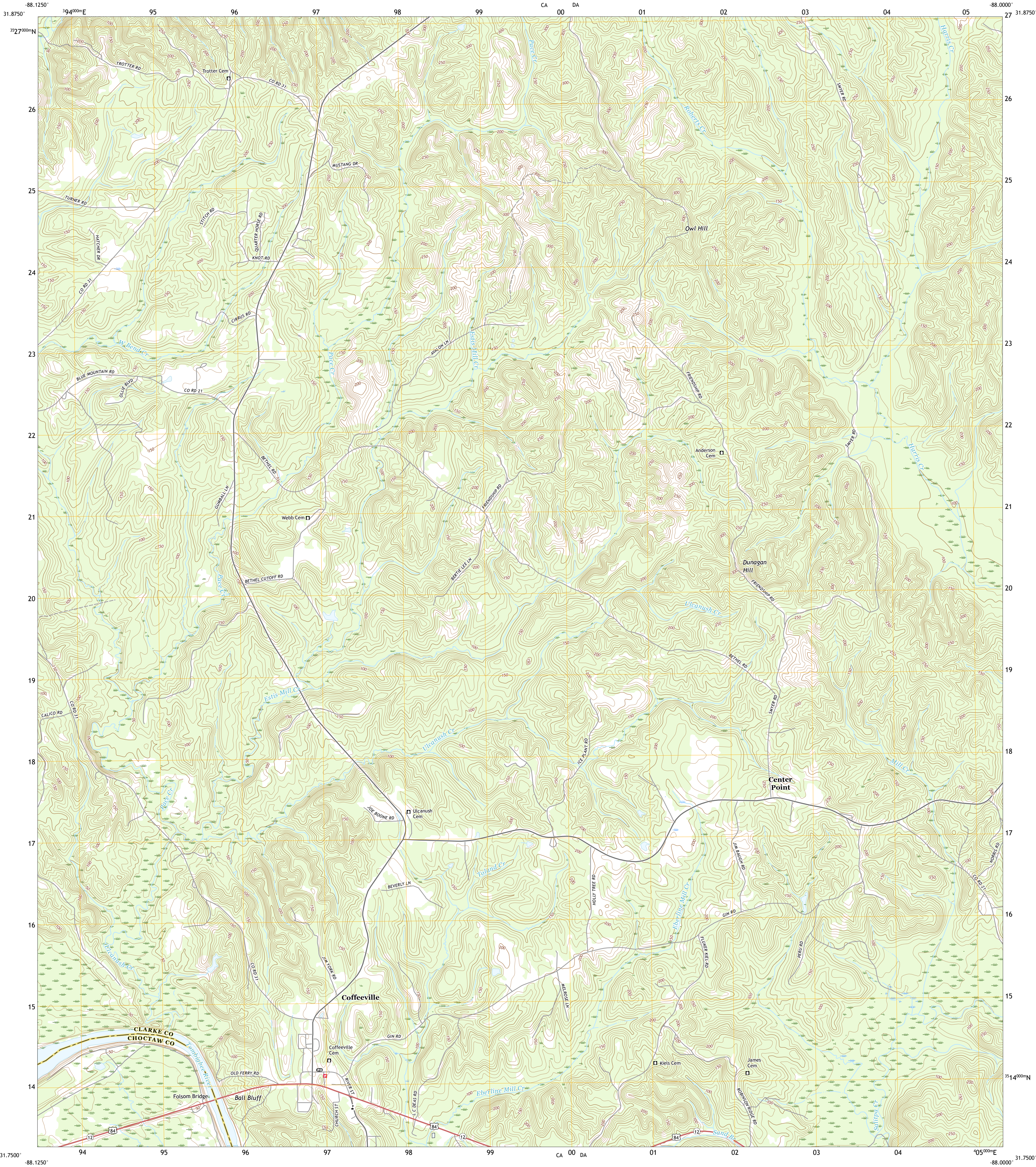




U.S. DEPARTMENT OF THE INTERIOR  
U.S. GEOLOGICAL SURVEY

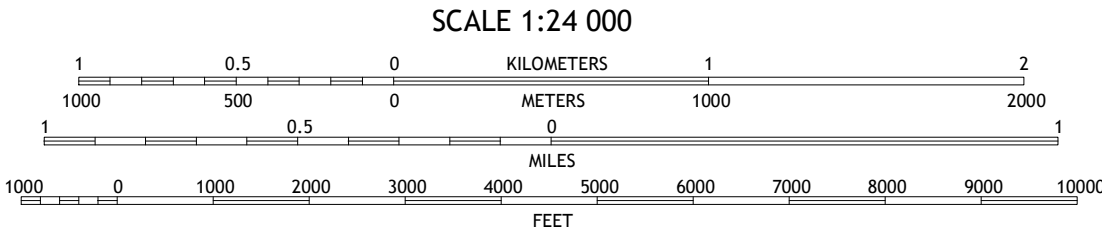
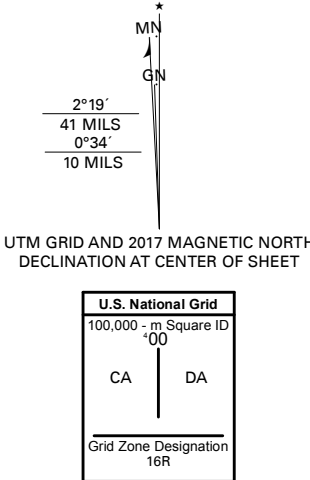


COFFEEVILLE QUADRANGLE  
ALABAMA  
7.5-MINUTE SERIES



Produced by the United States Geological Survey

North American Datum of 1983 (NAD83)  
World Geodetic System of 1984 (WGS84). Projection and  
1 000-meter grid/Universal Transverse Mercator, Zone 16R  
This map is not a legal document. Boundaries may be  
generalized for this map scale. Private lands within government  
reservations may not be shown. Obtain permission before  
entering private lands.  
Imagery.....NAIP, August 2015 - November 2015  
Roads.....U.S. Census Bureau, 2017  
Names.....GNIS, 1980 - 2018  
Hydrography.....National Hydrography Dataset, 2006 - 2017  
Contours.....National Elevation Dataset, 1999 - 2007  
Boundaries.....Multiple sources; see metadata file 2014 - 2016  
Public Land Survey System.....BLM, 2015  
Wetlands.....FWS National Wetlands Inventory 1979 - 1981



CONTOUR INTERVAL 10 FEET  
NORTH AMERICAN VERTICAL DATUM OF 1988  
This map was produced to conform with the  
National Geospatial Program US Topo Product Standard, 2011.  
A metadata file associated with this product is draft version 0.6.18



1	2	3
4	5	6
7	8	9

ADJOINING QUADRANGLES

1 Ararat  
2 Woods Bluff  
3 Morvin  
4 Coffeeville Lock and Dam  
5 McEntyre  
6 Bladen Springs  
7 Tattlersville  
8 Wim

ROAD CLASSIFICATION	
Expressway	Local Connector
Secondary Hwy	Local Road
Ramp	4WD
Interstate Route	US Route
	State Route

COFFEEVILLE, AL  
2018

