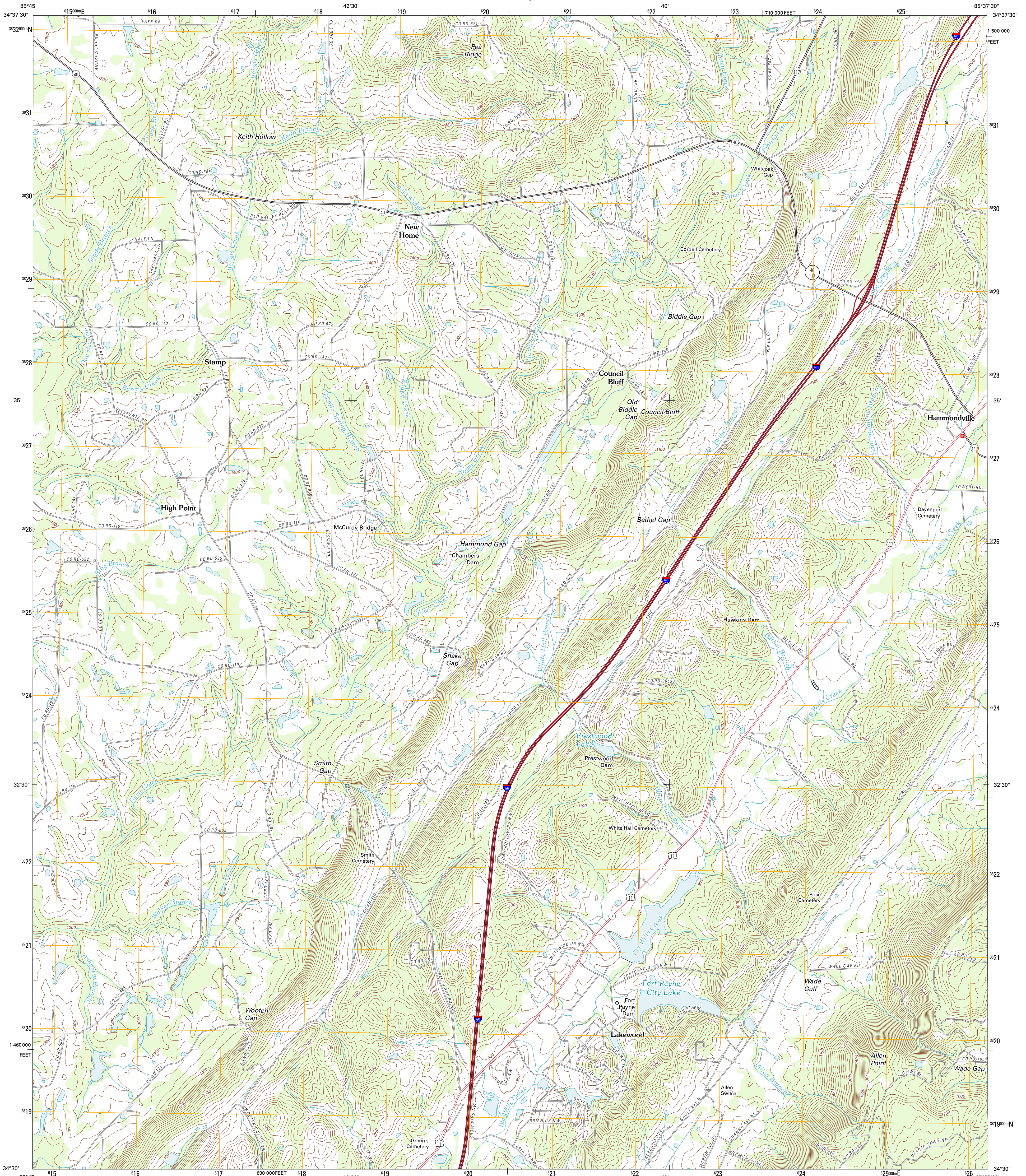




U.S. DEPARTMENT OF THE INTERIOR
U. S. GEOLOGICAL SURVEY

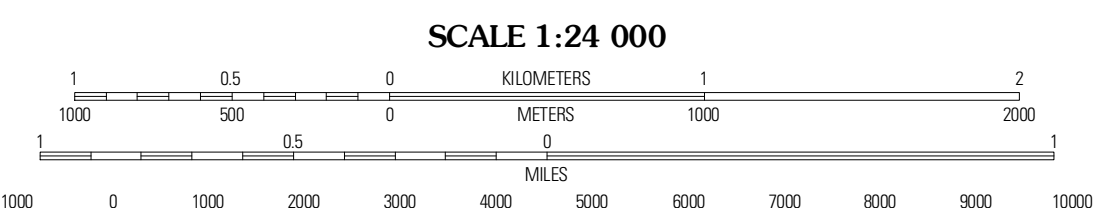
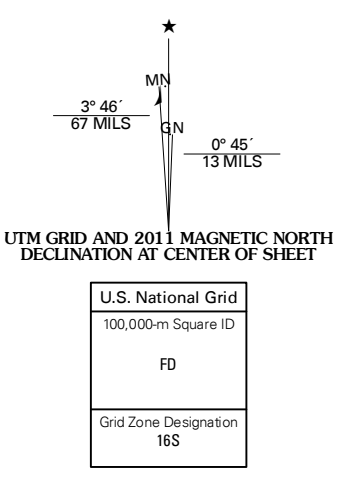


DUGOUT VALLEY QUADRANGLE
ALABAMA-DEKALB CO.
7.5-MINUTE SERIES

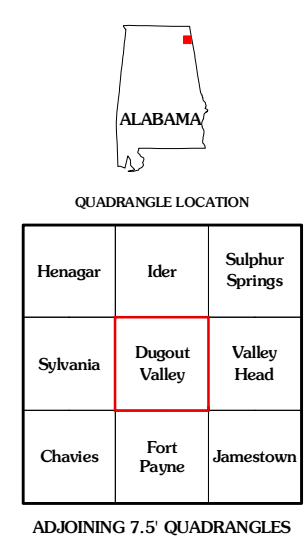


Produced by the United States Geological Survey
North American Datum of 1983 (NAD83)
World Geodetic System of 1984 (WGS84). Projection and
1 000-meter grid: Universal Transverse Mercator, Zone 16S
10 000-foot ticks: Alabama Coordinate System of 1983 (east zone)

Imagery: N.A.I.P., July 2009
Roads: 2006-2011 TomTom
Names: G.N.S., 2011
Hydrography: National Hydrography Dataset, 2009
Contours: National Elevation Dataset, 2008
Boundaries: Census, IBWC, IBC, USGS, 1972-2010



CONTOUR INTERVAL 20 FEET
NORTH AMERICAN VERTICAL DATUM OF 1988
This map was produced to conform with the
National Geospatial Program US Topo Product Standard, 2011.
A metadata file associated with this product is draft version 0.6.0



QUADRANGLE LOCATION

Henry	Ider	Sulphur Springs
Sylvania	Dugout Valley	Valley Head
Charles	Fort Payne	Jamestown

DUGOUT VALLEY, AL
2011

ADJOINING 7.5 QUADRANGLES